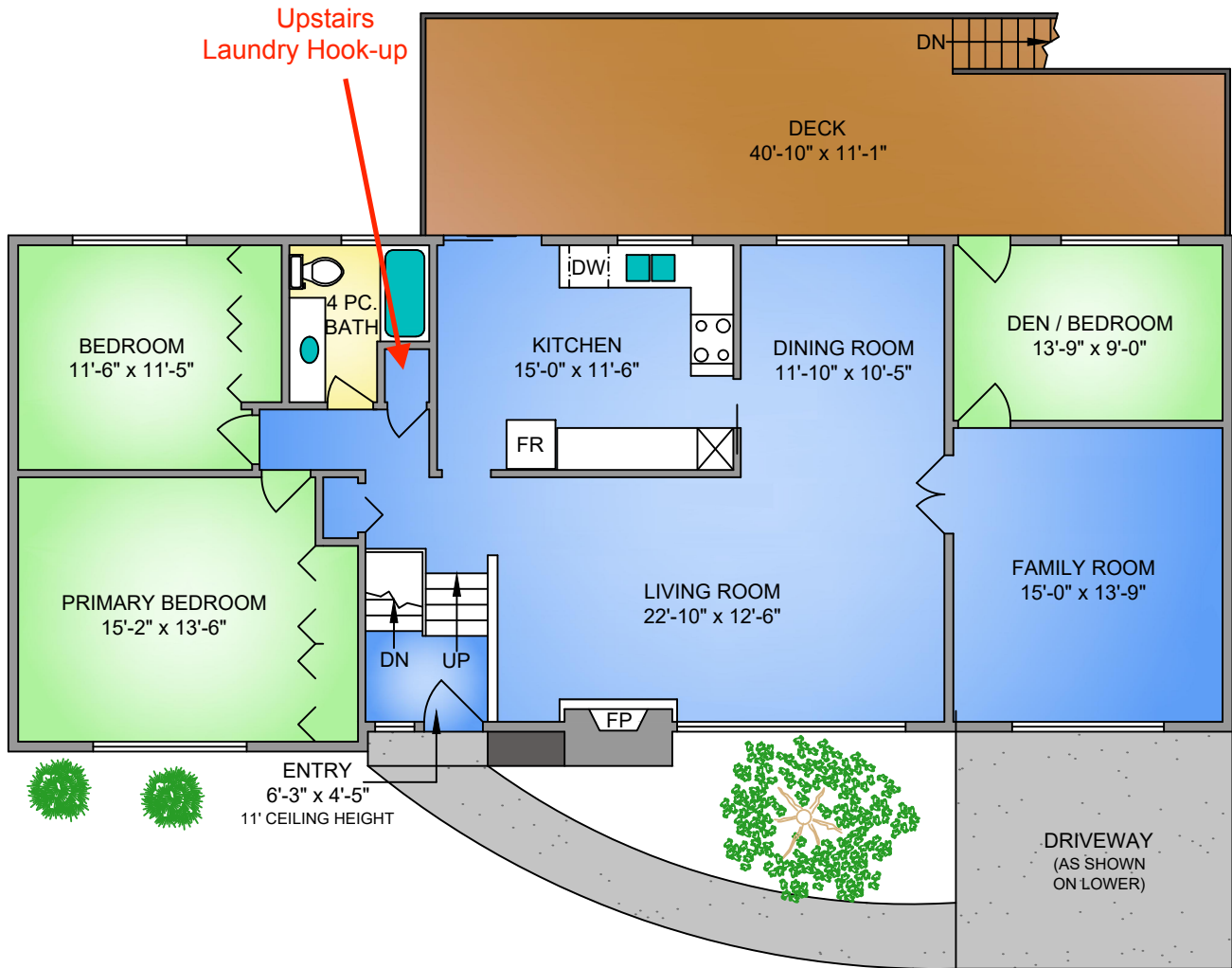
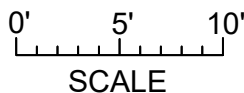
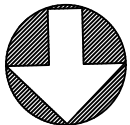


**1175 VERDIER AVE. - MAIN FLOOR**  
**1602 SQ. FT.**  
**8' CEILING HEIGHT**



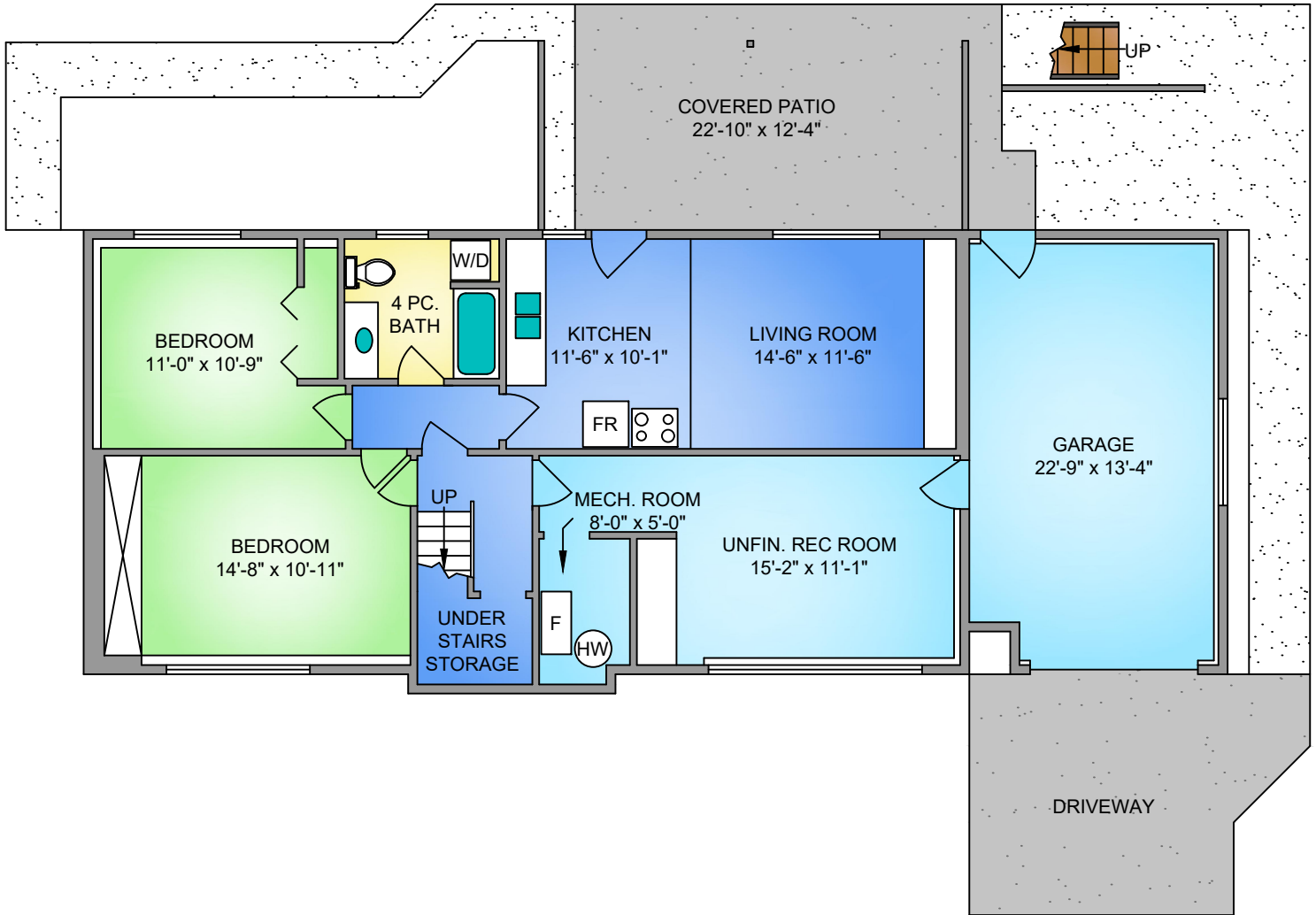
NORTH



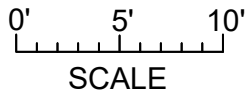
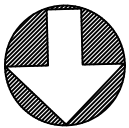
250-884-9753  
 matt@propermeasure.com  
 www.propermeasure.com

1175 VERDIER AVENUE JANUARY 7, 2021				
PREPARED FOR THE EXCLUSIVE USE OF THE PREFERRED HOMES TEAM PLANS MAY NOT BE 100% ACCURATE, IF CRITICAL BUYER TO VERIFY.				
FLOOR	AREA (SQ. FT.)			
	FINISHED	UNFINISHED	GARAGE	DECK / PATIO
MAIN	1602	-	-	413
LOWER	903	338	285	282
<b>TOTAL</b>	<b>2505</b>	<b>338</b>	<b>285</b>	<b>695</b>

**1175 VERDIER AVE. - LOWER FLOOR**  
**903 SQ. FT.**  
**7'-8" CEILING HEIGHT**



NORTH



**THE PREFERRED HOMES TEAM**  
[www.PreferredHomes.ca](http://www.PreferredHomes.ca) **RE/MAX** CAMOSUN



250-884-9753  
[matt@propermeasure.com](mailto:matt@propermeasure.com)  
[www.propermeasure.com](http://www.propermeasure.com)

1175 VERDIER AVENUE JANUARY 7, 2021				
PREPARED FOR THE EXCLUSIVE USE OF THE PREFERRED HOMES TEAM PLANS MAY NOT BE 100% ACCURATE, IF CRITICAL BUYER TO VERIFY.				
FLOOR	AREA (SQ. FT.)			
	FINISHED	UNFINISHED	GARAGE	DECK / PATIO
MAIN	1602	-	-	413
LOWER	903	338	285	282
<b>TOTAL</b>	<b>2505</b>	<b>338</b>	<b>285</b>	<b>695</b>