

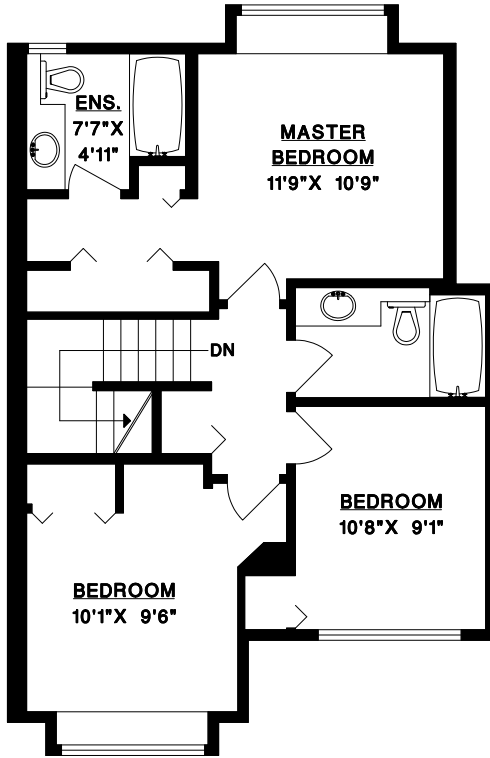


RE/MAX

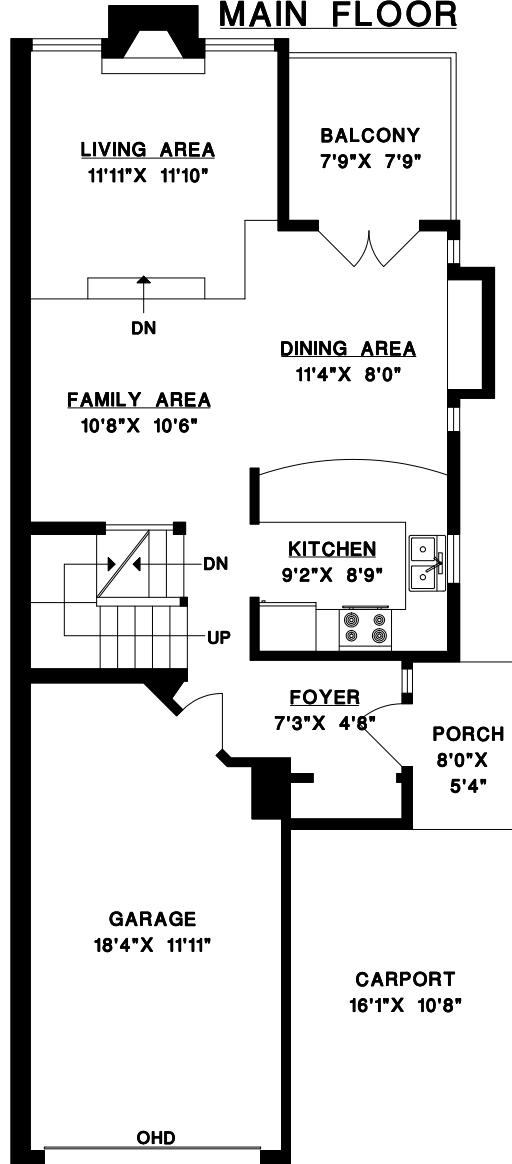
ADRIAN ALDOUS
778-837-0631

#28-7488 MULBERRY PL.,
BURNABY, B.C.

UPPER FLOOR



MAIN FLOOR



UPPER FLOOR	654	SQ. FT.
MAIN FLOOR	621	SQ. FT.
LOWER FLOOR	596	SQ. FT.
* TOTAL	1871	SQ. FT.

GARAGE	272	SQ. FT.
BALCONY	64	SQ. FT.
PATIO	68	SQ. FT.
PORCH	45	SQ. FT.
CARPORT	184	SQ. FT.

*Area calculations taken
to centre of perimeter walls.

LOWER FLOOR

