

904 Chilliwack St, New Westminster

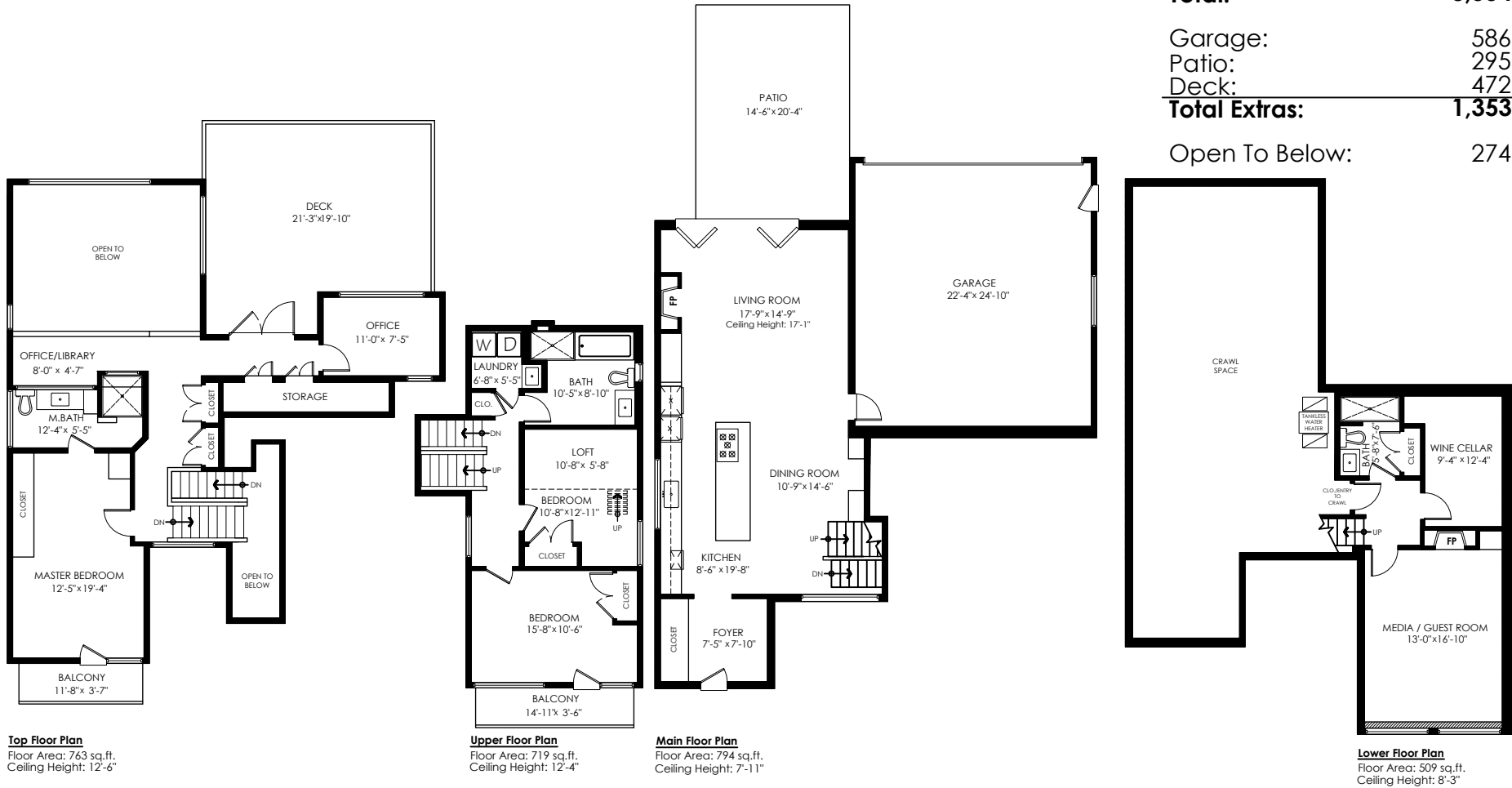


Main Floor: 794 sq.ft.
 Upper Floor: 719 sq.ft.
 Top Floor: 763 sq.ft.
 Lower Floor: 509 sq.ft.
Sub Total: 2,785 sq.ft.

Crawl Space: 769 sq.ft.
Total: 3,554 sq.ft.

Garage: 586 sq.ft.
 Patio: 295 sq.ft.
 Deck: 472 sq.ft.
Total Extras: 1,353 sq.ft.

Open To Below: 274 sq.ft.



Measurements, Design & Scanning | 604-329-5788

E&O Insured. Total square foot calculated to gross unit area. SQFT based on interior measurements to exterior walls, not taken from original blueprints, may include unfinished area. This is for marketing purposes only and is not intended for architectural/construction use. All details, sizes & placements should be considered approximate within +/- 2% tolerance.

www.PixlWorks.com

