



PHIL LeGREE

RE/MAX Masters Realty

Cell: (604) 518 - 1644

plegree@gmail.com

www.phillegree.com

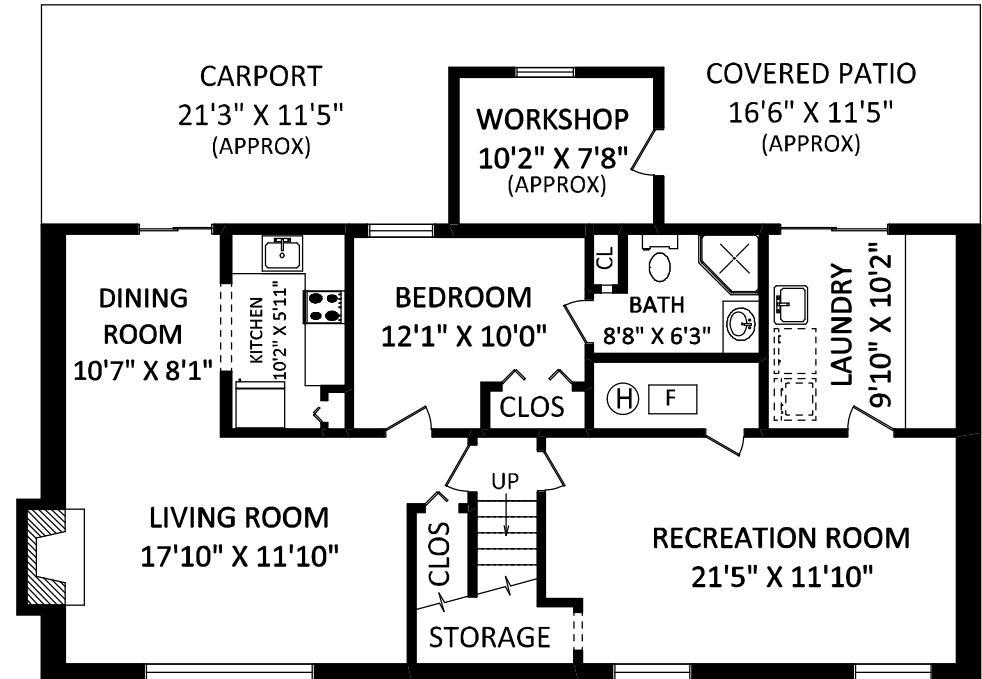
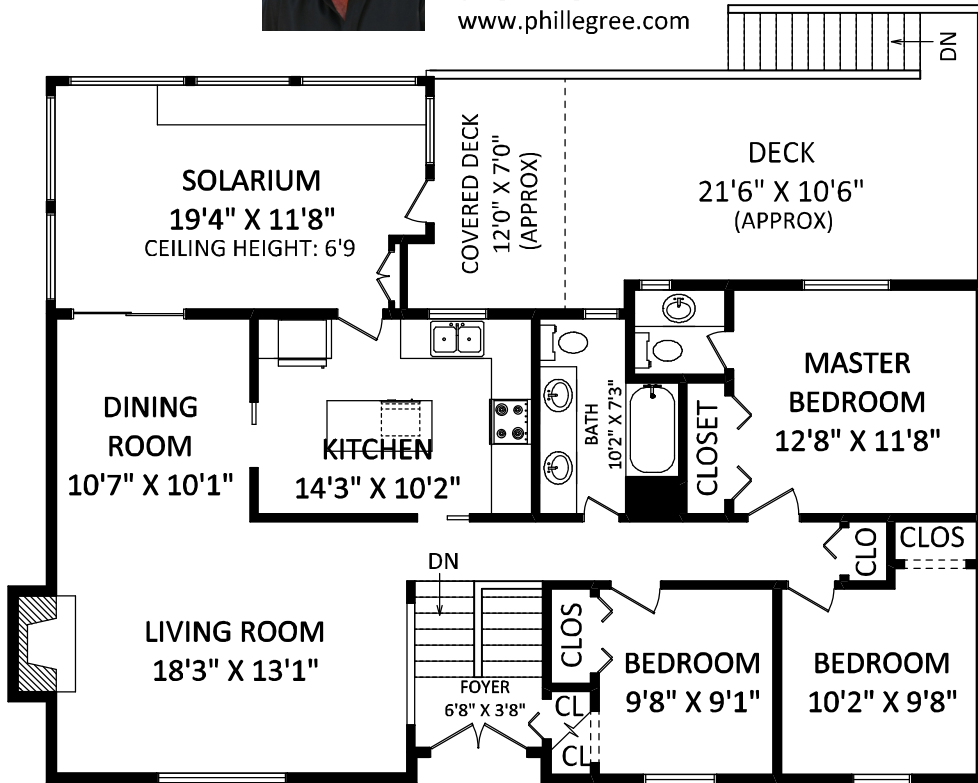
2659 Masfield Road,
North Vancouver, BC

TOTAL FINISHED AREA: 2629 SQ.FT.

OTHER AREA(S)

WORKSHOP: 91 SQ.FT.*

DECK: 334 SQ.FT.*



FLOOR PLAN BY:
[APRIL 24, 2013]
SEE VIRTUAL
TEL: 604-575-1244
www.seevirtual360.com

GENERAL NOTES:
1. MEASUREMENTS ARE FOR PROMOTIONAL USE ONLY & ARE NOT INTENDED FOR CONSTRUCTION USE. ROOM DIMENSIONS ARE APPROXIMATE. MEASUREMENTS & CALCULATIONS FOR FINISHED AREAS ARE E&O INSURED.
2. FINISHED AREAS ARE ENCLOSED AREAS IN A HOUSE THAT ARE SUITABLE FOR YEAR-ROUND USE, EMBODYING WALLS, FLOORS, AND CEILINGS THAT ARE SIMILAR TO THE REST OF THE HOUSE. (ANSI 2765-2003)
3. THIS FLOOR PLAN MAY ONLY BE REPRODUCED WITH PERMISSION OF THE REALTOR(S) ON THIS FLOOR PLAN.
* ANY MEASUREMENT WITH AN ASTERISK (*) OR (APPROX) ARE APPROXIMATE AND FOR ILLUSTRATION PURPOSES ONLY AND ARE NOT E&O INSURED.



NORTH

SCALE: 0 2 5 10 FT