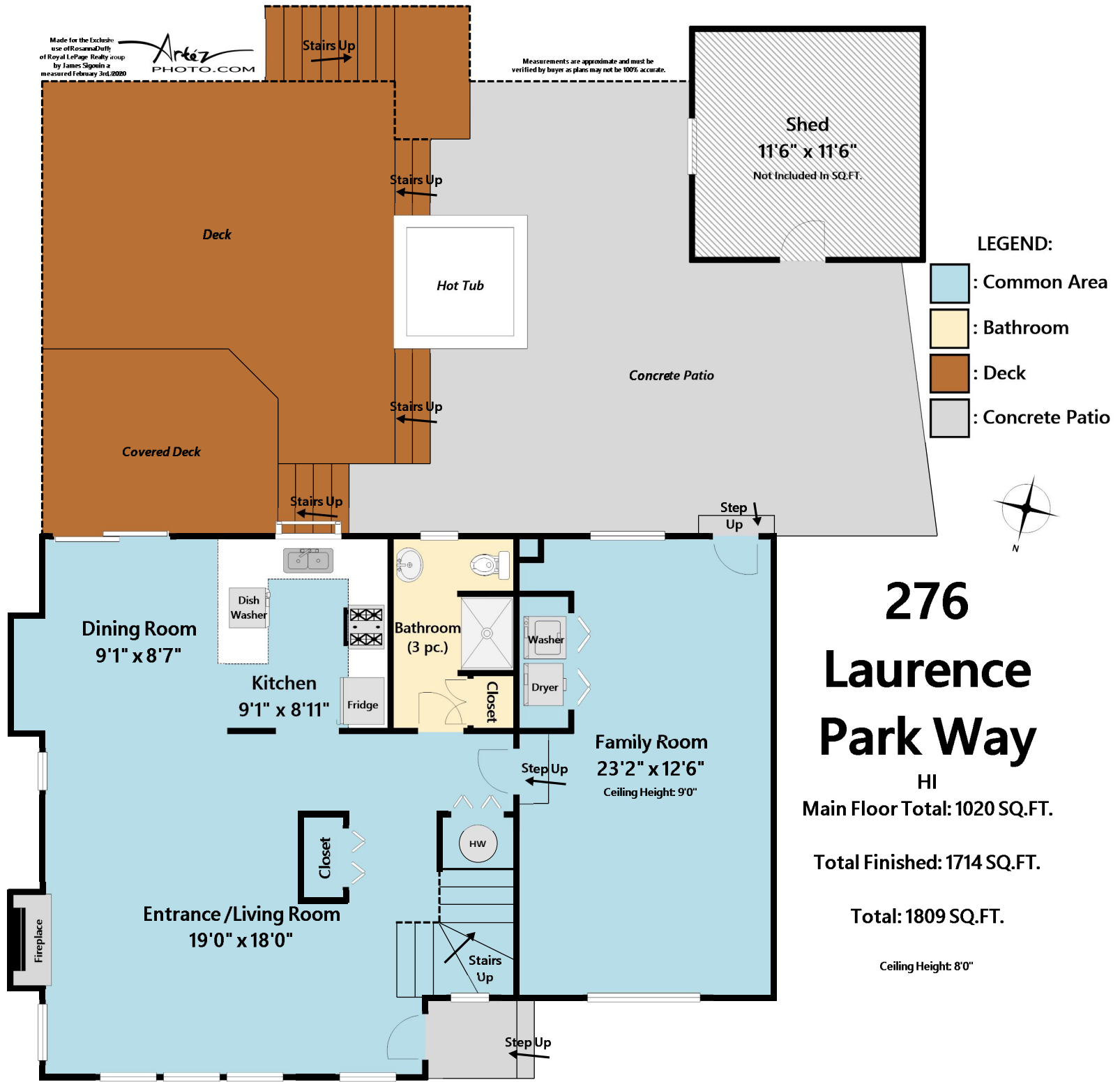


Made for the Exclusive use of Resale/Driftly of Royal LePage Realty Group by James Sigouin as measured February 3rd, 2020



Measurements are approximate and must be verified by buyer as plans may not be 100% accurate.



LEGEND:

- : Common Area
- : Bathroom
- : Deck
- : Concrete Patio



# 276 Laurence Park Way

HI  
Main Floor Total: 1020 SQ.FT.

Total Finished: 1714 SQ.FT.

Total: 1809 SQ.FT.

Ceiling Height: 8'0"

Dining Room  
9'1" x 8'7"

Kitchen  
9'1" x 8'11"

Bathroom  
(3 pc.)

Family Room  
23'2" x 12'6"  
Ceiling Height: 9'0"

Entrance / Living Room  
19'0" x 18'0"

Shed  
11'6" x 11'6"  
Not Included in SQ.FT.

Hot Tub

Stairs Up

Stairs Up

Stairs Up

Stairs Up

Step Up

Step Up

Stairs Up

Step Up

Fireplace

Dish Washer

Fridge

Washer

Dryer

Closest

Closest

HW

Deck

Covered Deck

Concrete Patio