

276 Laurence Park Way

HI

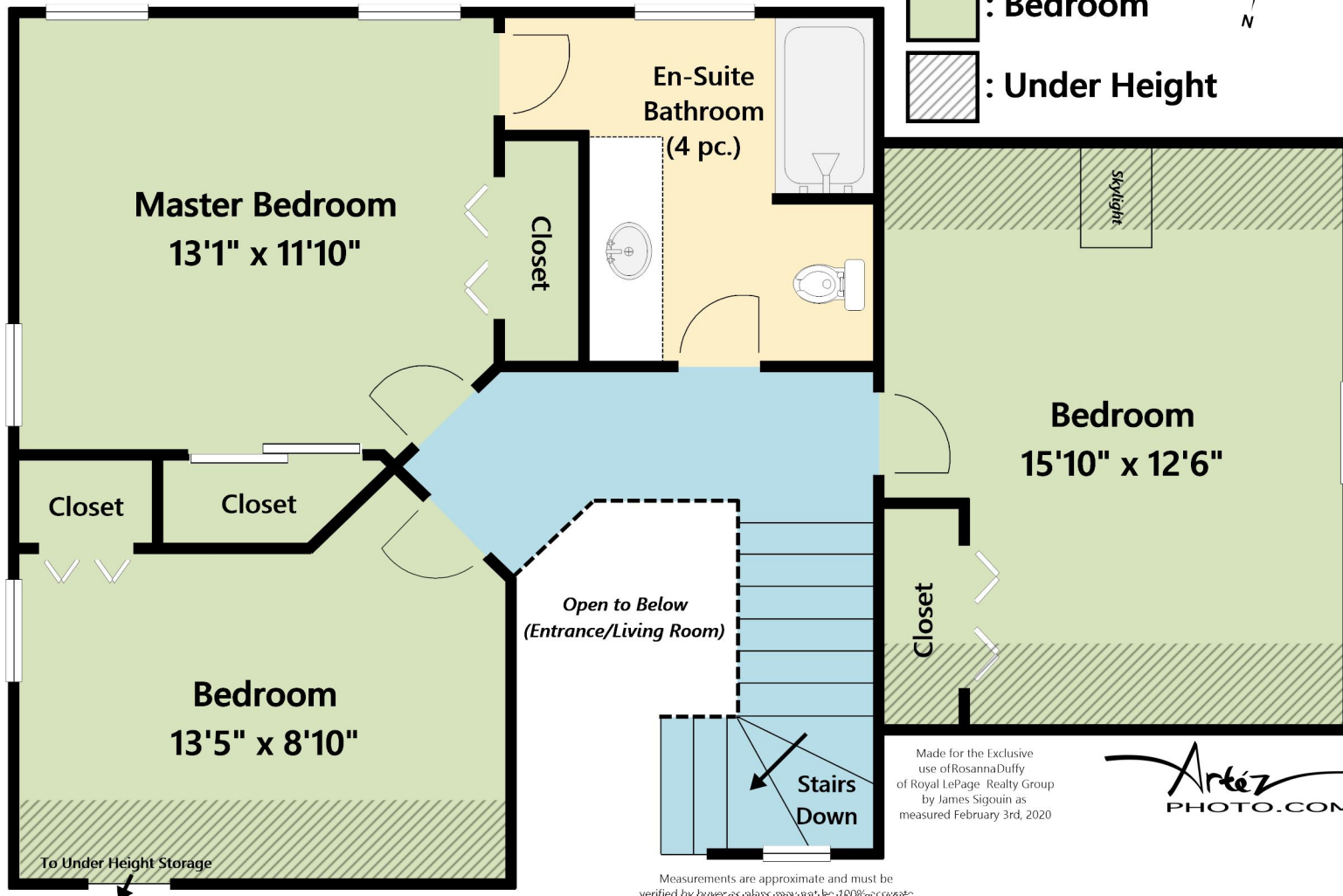
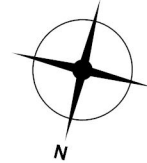
Upper Floor Total Finished: 694 SQ.FT.

Upper Floor Total: 789 SQ.FT.

Ceiling Height: 8'0"

LEGEND:

-  : Common Area
-  : Bathroom
-  : Bedroom
-  : Under Height



Made for the Exclusive use of Rosanna Duffy of Royal LePage Realty Group by James Sigouin as measured February 3rd, 2020

Artez PHOTO.COM

Measurements are approximate and must be verified by buyer as plans may not be 100% accurate