

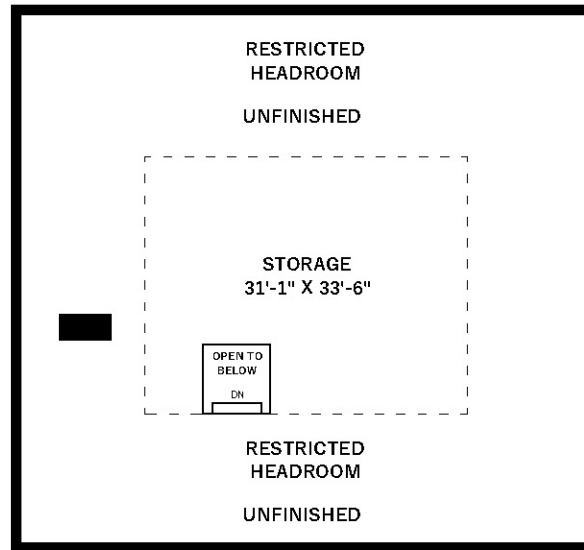
604-626-9734  
 info@jamesb.ca  
 www.jamesb.ca

2751 Oxford St  
 Vancouver, BC

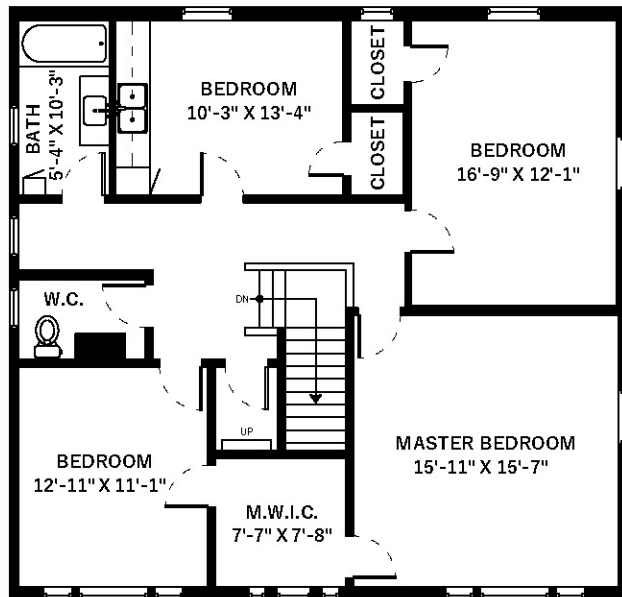
Main Floor	1261 SQ.FT.
Upper Floor	1261 SQ.FT.
Top Floor	271 SQ.FT.
Lower Floor	1261 SQ.FT.
<b>Total</b>	<b>4054 SQ.FT.</b>

Deck	28 SQ.FT.
Porch	37 SQ.FT.
<b>Total Extras</b>	<b>65 SQ.FT.</b>

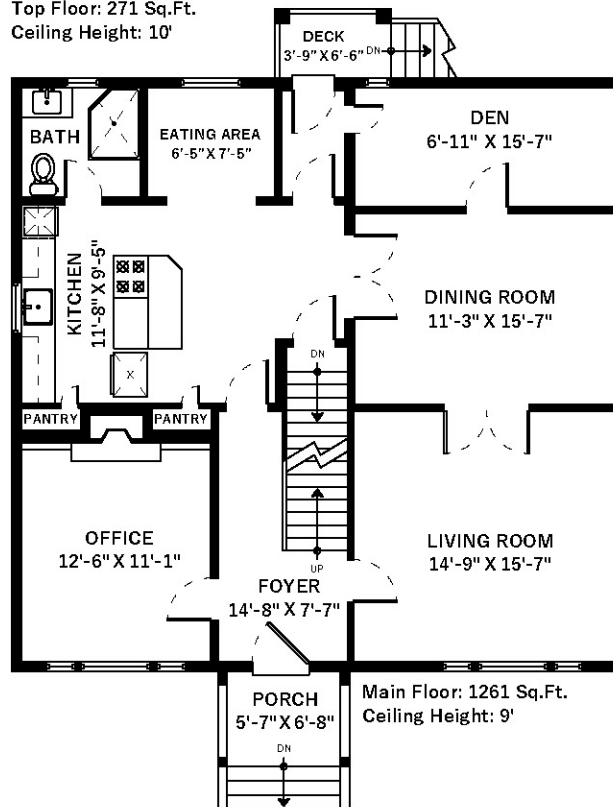
Open To Below	16 SQ.FT.
Restricted Headroom	820 SQ.FT.



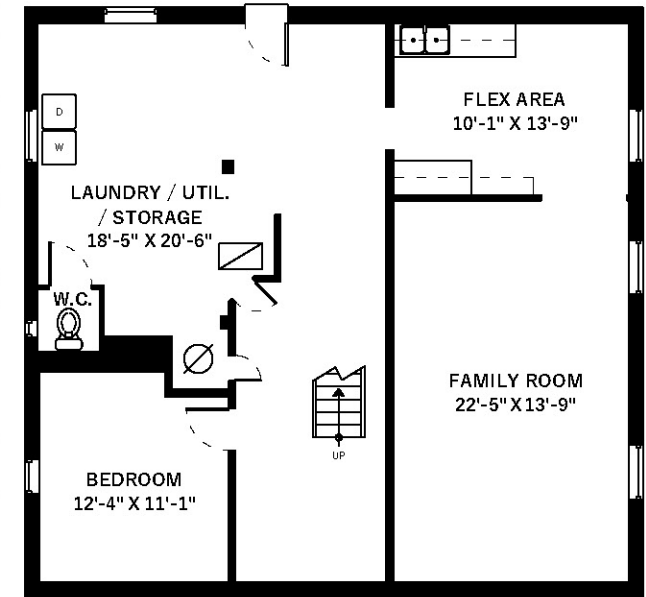
Top Floor: 271 Sq.Ft.  
 Ceiling Height: 10'



Upper Floor: 1261 Sq.Ft.  
 Ceiling Height: 8'



Main Floor: 1261 Sq.Ft.  
 Ceiling Height: 9'



Lower Floor: 1261 Sq.Ft.  
 Ceiling Height: 7'-5"