



Albert Gilmer

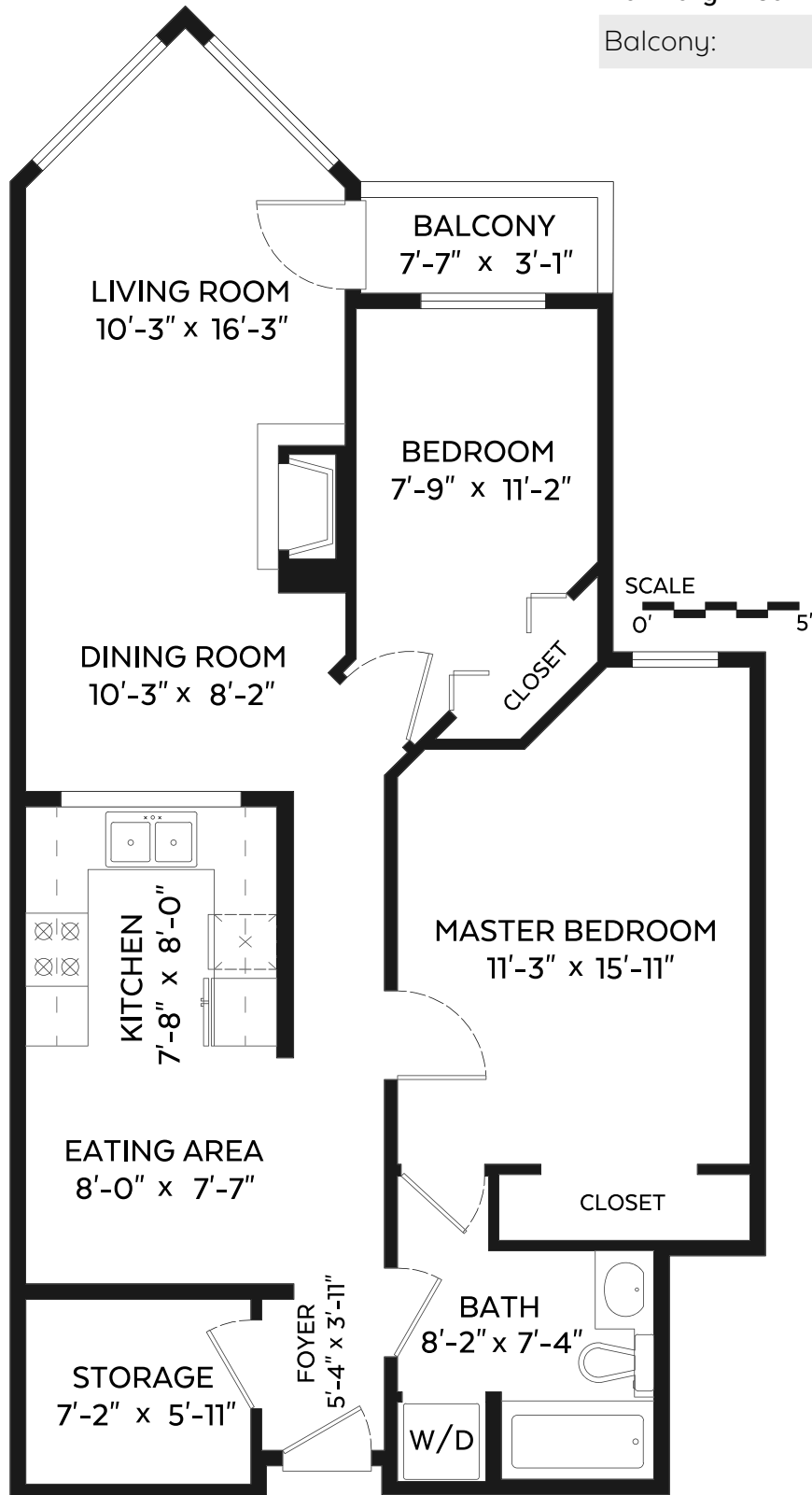
778.997.0175 info@vancouverhometeam.ca
Re/Max Crest Westside www.vancouverhometeam.ca

#206-509 Carnarvon Street,
New Westminster, B.C.

Main Floor: 919 sq.ft.

Auxiliary Area

Balcony: 29 sq.ft.



Measured on: March 21, 2017

The floor plan is not suitable for architectural/construction, square footage-method ANSI Z765 used & is covered under E&O. © Excelsior Measuring Inc. 2017. All rights reserved for Excelsior Measuring Inc. Users shall not publish and distribute such material (in whole or in part) and/or incorporate it in other works in any form.



NORTH

