

PLAN A

2 BEDROOM + DEN WITH OUTDOOR LIVING ROOM

ENCLOSED AREA	OUTDOOR LIVING ROOM	TOTAL AREA
967 SF	169 SF	1,136 SF

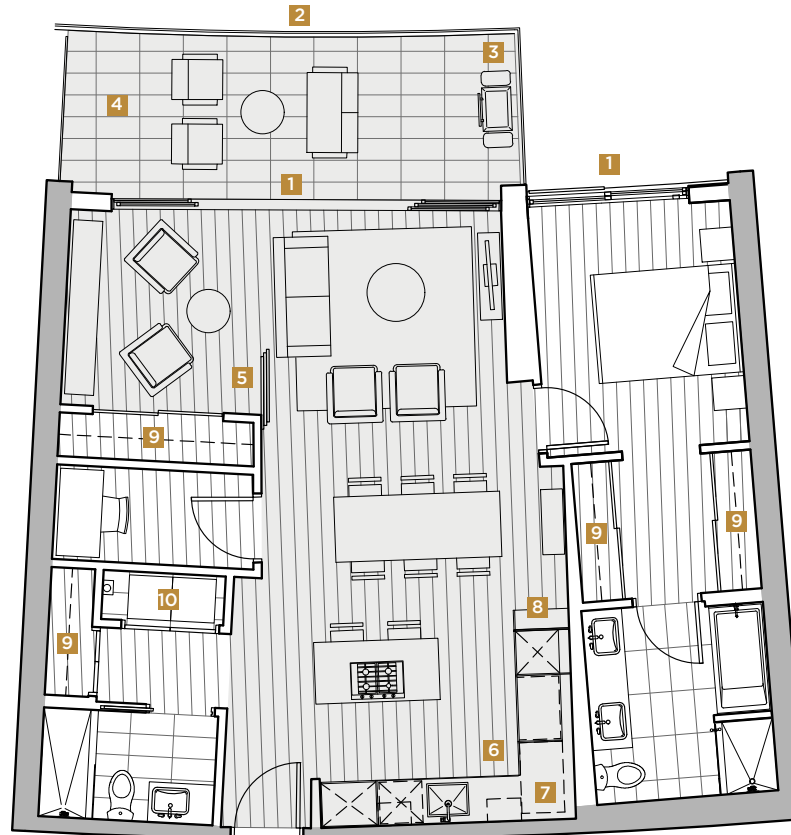
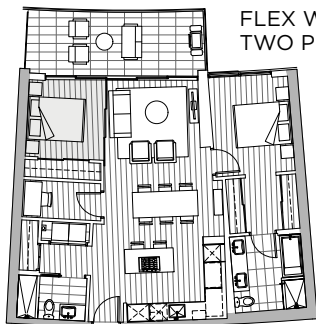
Actual suite plan may have minor variations from or be shown as a mirror image of the typical plan shown.

EXPANDED INDOOR / OUTDOOR LIVING:

- 1** ALFRESCO SLIDING DOORS & BALCONETTE SLIDING DOORS
- 2** OUTDOOR SOLAR SHADES
- 3** GAS OUTLET & HOSE BIB (LOCATION MAY VARY)
- 4** PORCELAIN TILE FLOOR, WOOD-LOOK SOFFIT CEILING WITH HEATER & LIGHTING
- 5** FLEX WALL TO BEDROOM

INTERIOR FEATURES:

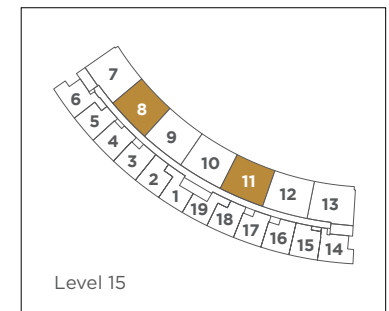
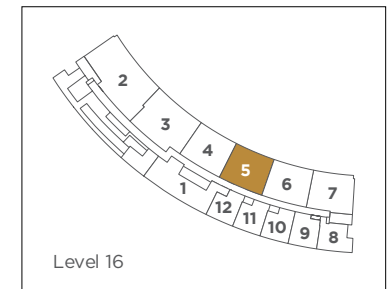
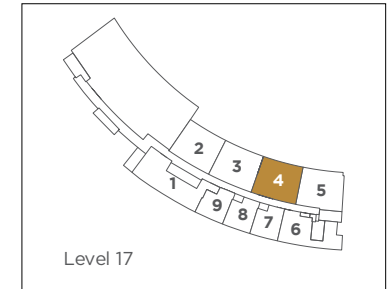
- 6** MIELE STAINLESS STEEL 30" KITCHEN APPLIANCES PACKAGE:
 - SPEED OVEN & WALL OVEN
 - 36" BOTTOM MOUNT FRIDGE
 - 24" FULL HEIGHT WINE COOLER STORAGE SYSTEM
 - GAS COOKTOP WITH ISLAND HOOD FAN
 - 24" DISHWASHER
- 7** MAGIC CORNER STORAGE SYSTEM
- 8** BUILT-IN OPEN SHELVING
- 9** CLOSET ORGANIZER SYSTEM
- 10** MIELE WASHER DRYER WITH UPPER ORGANIZER



FLEX WALL OPEN FOR EXPANDED ENTERTAINING SPACE

THE EXPANDED INDOOR / OUTDOOR LIVING OFFERS A TOTAL LIVING, DINING & ENTERTAINING SPACE OF APPROXIMATELY 700 SF

avenue
ONE



AVENUEONE.CA

20200708

The developer reserves the right to make modifications and changes to features and finishes, brands, materials, building and landscape design, specifications, ceiling heights, number of floors, number of units, flooring patterns and floor plans without notification. Approximate suite sizes are computed from the outside face of exterior walls, the outside face of corridor and common walls, and the centerline of walls adjacent to other strata lots. Approximate measurements for exterior balconies and terraces are computed from the outside face of exterior walls to the slab edges of the outside face of parapets. Balcony configuration and size may vary floor to floor. Any flooring pattern shown on the plan does not indicate the actual wood or laminate, tile or paver, shape, size or direction installed. The same suite type may vary from floor to floor and/or be slightly altered depending on floor plate orientation. The suite may include one or more steps leading to entry point to or from roof deck(s), terrace(s), patio(s) or balcony(s). Window and mullion configurations may vary by floor. Window systems may include panels, walls or other architectural features that may block views and reduce window glazing. Terrace areas may include planters. All matters will be governed entirely by the terms of the applicable disclosure statement and purchaser contract in each case. This is not an offering for sale. Any such offering may only be made with the applicable disclosure statement and agreement of purchase and sale. Concord Avenue One Limited Partnership E&OE.