



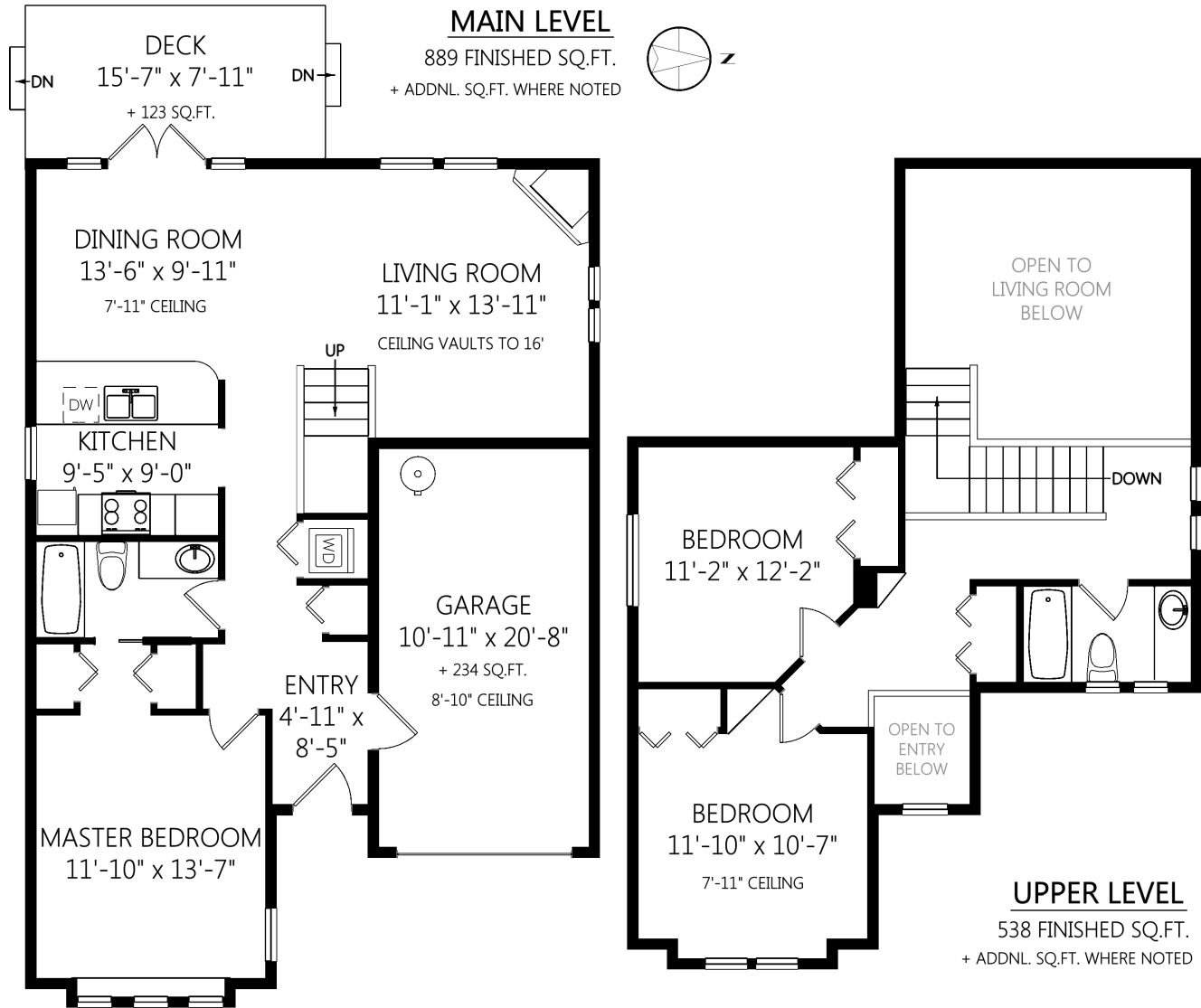
# Ann Watley, Personal Real Estate Corporation

ann@annwatley.com <http://www.annwatley.com>  
 Office: (250) 656-3486 Direct: (250) 656-3486



**Pemberton Holmes Real Estate Ltd**  
 107-2360 Beacon Avenue  
 Sidney, BC V8L 1X3

3-2325 Henry Ave



	Fin. Sq.Ft.	UnFin. Sq.Ft.	Total Sq.Ft.
Garage	0	234	234
Main Level	889	0	889
Upper Level	538	0	538
<b>Total</b>	<b>1427</b>	<b>234</b>	<b>1661</b>

Shown length and width dimensions are approximate.  
 Area sq.ft. is representative of the on-site measurements. (1" accuracy)



Figures, Calculations, and Representations are for indicative and promotional purpose only.  
 VI Standard Real Estate Services Inc. will not be liable for any damages of any kind arising from the mis-use of this information.