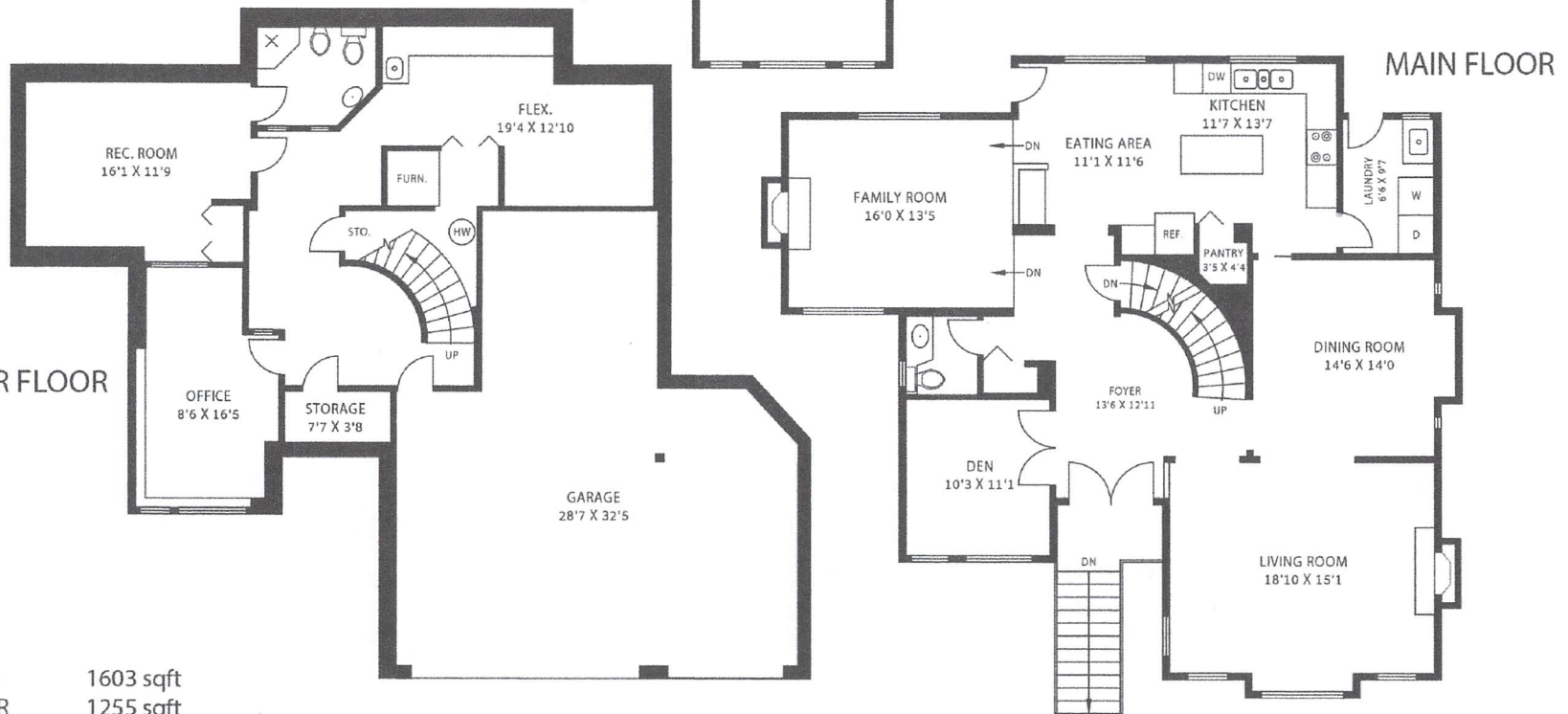
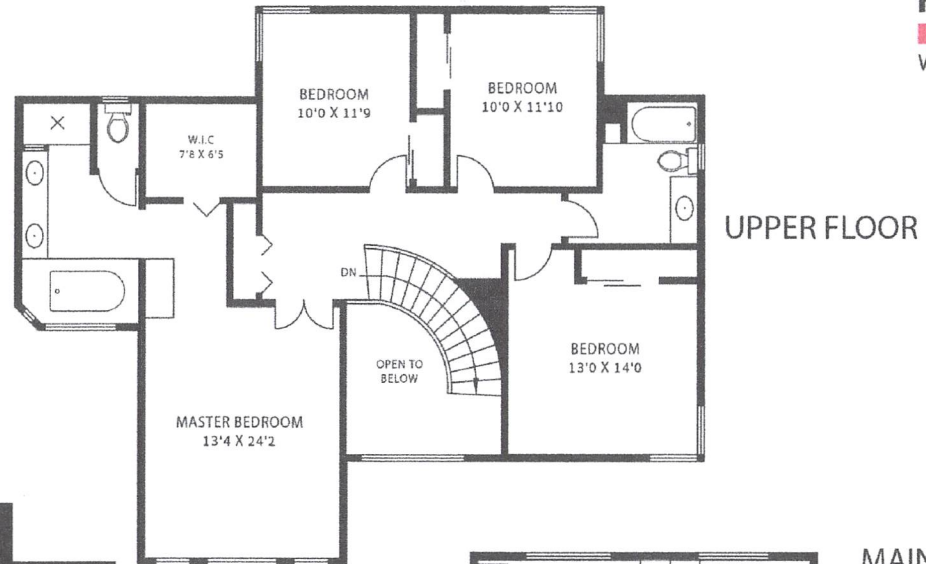
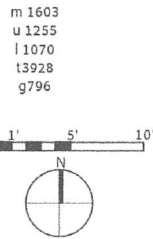


3 DEERWOOD PL
PORT MOODY, BC

PRESENTED BY:
MARIE TAVERNA

604-802-7759
kmtaverna@gmail.com



LOWER FLOOR

MAIN FLOOR 1603 sqft
UPPER FLOOR 1255 sqft
LOWER FLOOR 1070 sqft
TOTAL LIVABLE AREA 3928 sqft
GARAGE 796 sqft