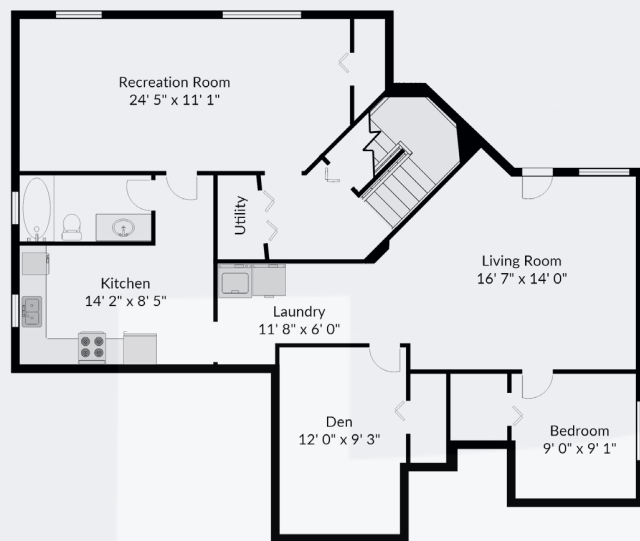


16709 63B Ave, Surrey, BC

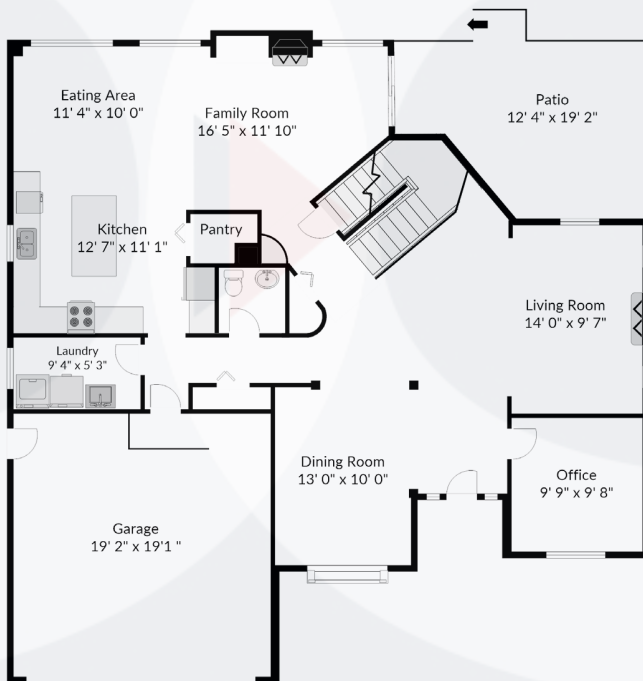
Finished 3877 sq. ft.

Garage 388 sq. ft.



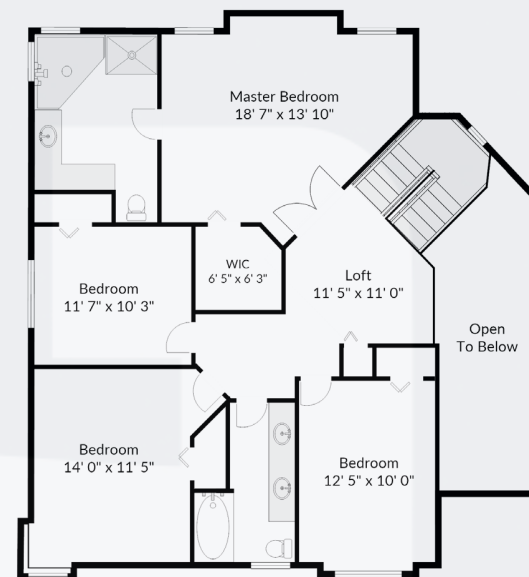
Basement

1370 sq. ft.



Main Level

1375 sq. ft.



Upper Level

1132 sq. ft.

germyn.ca

Measurements and floor plan are approximate and are to be used for advertising purposes only. Not suitable for construction or architectural use. E&O Insured. Square footage calculated using ANSI Z765 method. Measured October 2017.