

LINE BET. PARK LOT 26 & 27
 N. 25° 14' E.
 Inst. # 40979
 RC. EPISCOPAL CORD.
 Surveyed - Sept 15/33

N. 64° 29' W - 138' 2"

HERKIC STREET LIMITS
 PRODUCED

1941'S - U. 64° 40' W. - CRK.
 SISTERS OF ST. JOSEPH
 INST. # 44995

SACRED HEART SCHOOL
 PROPERTY
 Surveyed by L.R.K. plan dated
 Jan 9, 1946

PARK LOT 26

PARK LOT 25

PARK LOT 24

WELLINGTON DRIVE EAST
 PLACE OF Sect. 15
 215:00 of CRK.

BET PARK LOTS 24 & 25
 13:2 from Queen
 N. 25° 17' E.

16' LANE - N. 25° 14' E
 428:2

ELDRIL

RE B

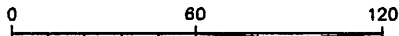


SKETCH OF
 PART OF LOTS 25 AND 26 (North Queen Street)
 Concession 1 in the former Twp of St. Marys
 AND
 PART OF LOTS 6, 7, AND 10
 Registered Plan No 1043
 (ELDRIDGE "C" SUBDIVISION)

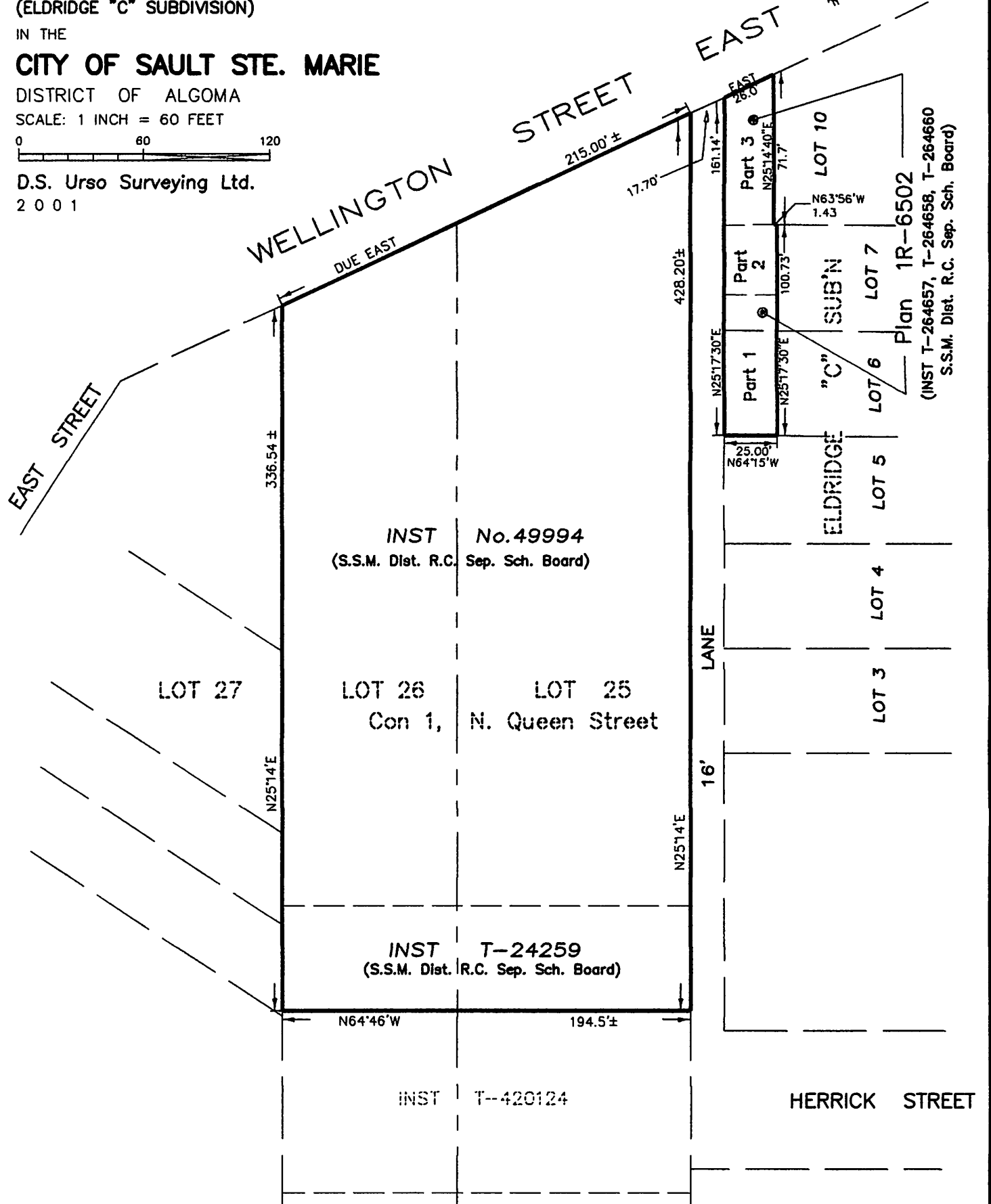
IN THE
CITY OF SAULT STE. MARIE

DISTRICT OF ALGOMA

SCALE: 1 INCH = 60 FEET



D.S. Urso Surveying Ltd.
 2 0 0 1



Plan 1R-6502
 (INST T-264657, T-264658, T-264660
 S.S.M. Dist. R.C. Sep. Sch. Board)

AREAS	
PART OF LOTS 25 and 26- N. QUEEN ST.	-- 1.705 Ac.±
PARTS 1,2 AND 3 - 1R-6502	-- 0.093 Ac.

D.S. Urso Surveying Ltd.
 Ontario Land Surveyors ♦ Canada Land Surveyors
 Planning Consultants
 105 BRUCE ST. SAULT STE. MARIE ONT, P6A 2X6
 TEL: (705) 254-7851
 FAX: (705) 254-5571

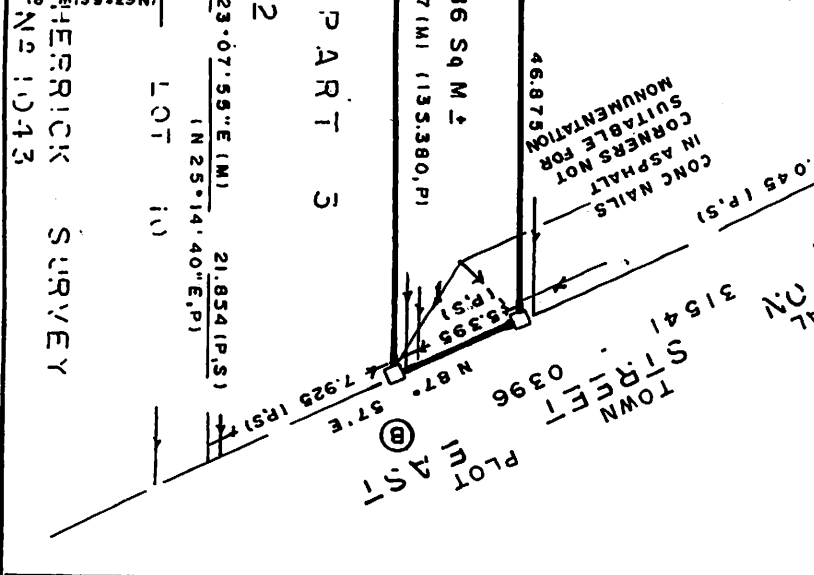
DRAWN BY: D.F. CHECKED BY: F.E.W.	FIELD: N/A	FILE No: U-8737
--------------------------------------	---------------	---------------------------

JUNE 28th, 2001
 SAULT STE. MARIE, ONT.
 F.E. WALL
 ONTARIO LAND SURVEYOR
 © COPYRIGHT 2001 D.S. Urso Surveying Ltd.

PLAN OF SURVEY OF
PART OF LANE
BLOCK 'C'
REGISTERED PLAN N° 1043
CITY OF SAULT STE MARIE
DISTRICT OF ALGOMA
SCALE 1 : 300
D.S. URSO, SURVEYING LTD.

0 1 2 3 4 5 10 METRES

I REQUIRE THIS PLAN TO BE DEPOSITED UNDER E LAND TITLES ACT.		DATE Nov 25, 2010
RECEIVED AND DEPOSITED		DATE <i>Nov 26/10</i>
PLAN IR-12005		
DEPUTY LAND REGISTRAR		
FOR THE LAND TITLES DIVISION OF ALGOMA(11)		
SCHEDULE		
PART	LANE	PIN
1	PIORANE BLK.C. REG'D PLAN N° 1043	PART OF 31541
PART I COMPRISES PART OF PIN 31541 - 0261		-0261



LEGEND

- DENOTES FOUND MONUMENT
- PLANTED MONUMENT
- IB IRON BAR
- SIB STANDARD IRON BAR
- SSIB SHORT STANDARD IRON BAR
- P PLAN IR-6502
- M MEASURED
- S SET
- PI REG'D PLAN N° 1043
- NOT TO SCALE
- JBC J.B. CHAMBERS O.L.S.
- DSU D.S. URSO O.L.S.
- PIN PROPERTY IDENTIFICATION NUMBER

BEARING NOTE

BEARINGS ARE UTM GRID, DERIVED FROM POINTS (A) AND (B) SHOWN HEREON, HAVING A BEARING OF N 23° 09' 50" E AND ARE REFERRED TO THE CENTRAL MERIDIAN OF UTM ZONE 16 (87° WEST LONGITUDE) NAD 83 (CSRS) (1997.01).

METRIC CONVERSION

DISTANCES AND COORDINATES SHOWN ON THIS PLAN ARE IN METRES AND CAN BE CONVERTED TO FEET BY DIVIDING BY 0.3048.

GRID SCALE CONVERSION

DISTANCES ARE GROUND AND CAN BE CONVERTED TO GRID BY MULTIPLYING BY THE COMBINED SCALE FACTOR OF 0.99987799.

SURVEYOR'S CERTIFICATE

I CERTIFY THAT:
1. THIS SURVEY AND PLAN ARE CORRECT AND IN ACCORDANCE WITH THE SURVEYS ACT, THE SURVEYORS ACT, AND THE LAND TITLES ACT AND THE REGULATIONS MADE UNDER THEM
2. THE SURVEY WAS COMPLETED ON SEPTEMBER 10th, 2010

NOV 26th, 2010
SAULT STE MARIE, ONT.
D.S. URSO
ONTARIO LAND SURVEYOR

POINT ID	NORTHING	EASTING
A	5153987.675	705246.288
B	5154112.167	705299.553

COORDINATES TO UTM ZONE 16
HAD 83 (CSRS) (1997.01).

INTEGRATION DATA

SPECIFIED CONTROL POINTS (ICP): UTM ZONE 16

COORDINATES TO UTM ZONE 16
HAD 83 (CSRS) (1997.01).

SEC. 14(2) OF O. REG. 216/10.

COORDINATES TO UTM ZONE 16
HAD 83 (CSRS) (1997.01).

COORDINATES TO UTM ZONE 16
HAD 83 (CSRS) (1997.01).

COORDINATES TO UTM ZONE 16
HAD 83 (CSRS) (1997.01).

COORDINATES TO UTM ZONE 16
HAD 83 (CSRS) (1997.01).

COORDINATES TO UTM ZONE 16
HAD 83 (CSRS) (1997.01).

COORDINATES TO UTM ZONE 16
HAD 83 (CSRS) (1997.01).

COORDINATES TO UTM ZONE 16
HAD 83 (CSRS) (1997.01).

COORDINATES TO UTM ZONE 16
HAD 83 (CSRS) (1997.01).

COORDINATES TO UTM ZONE 16
HAD 83 (CSRS) (1997.01).

COORDINATES TO UTM ZONE 16
HAD 83 (CSRS) (1997.01).

COORDINATES TO UTM ZONE 16
HAD 83 (CSRS) (1997.01).

COORDINATES TO UTM ZONE 16
HAD 83 (CSRS) (1997.01).

COORDINATES TO UTM ZONE 16
HAD 83 (CSRS) (1997.01).

COORDINATES TO UTM ZONE 16
HAD 83 (CSRS) (1997.01).

COORDINATES TO UTM ZONE 16
HAD 83 (CSRS) (1997.01).

COORDINATES TO UTM ZONE 16
HAD 83 (CSRS) (1997.01).

COORDINATES TO UTM ZONE 16
HAD 83 (CSRS) (1997.01).

COORDINATES TO UTM ZONE 16
HAD 83 (CSRS) (1997.01).

COORDINATES TO UTM ZONE 16
HAD 83 (CSRS) (1997.01).

COORDINATES TO UTM ZONE 16
HAD 83 (CSRS) (1997.01).

COORDINATES TO UTM ZONE 16
HAD 83 (CSRS) (1997.01).

COORDINATES TO UTM ZONE 16
HAD 83 (CSRS) (1997.01).

COORDINATES TO UTM ZONE 16
HAD 83 (CSRS) (1997.01).

COORDINATES TO UTM ZONE 16
HAD 83 (CSRS) (1997.01).

COORDINATES TO UTM ZONE 16
HAD 83 (CSRS) (1997.01).

COORDINATES TO UTM ZONE 16
HAD 83 (CSRS) (1997.01).

COORDINATES TO UTM ZONE 16
HAD 83 (CSRS) (1997.01).

COORDINATES TO UTM ZONE 16
HAD 83 (CSRS) (1997.01).

COORDINATES TO UTM ZONE 16
HAD 83 (CSRS) (1997.01).

COORDINATES TO UTM ZONE 16
HAD 83 (CSRS) (1997.01).

COORDINATES TO UTM ZONE 16
HAD 83 (CSRS) (1997.01).

COORDINATES TO UTM ZONE 16
HAD 83 (CSRS) (1997.01).

COORDINATES TO UTM ZONE 16
HAD 83 (CSRS) (1997.01).

COORDINATES TO UTM ZONE 16
HAD 83 (CSRS) (1997.01).

COORDINATES TO UTM ZONE 16
HAD 83 (CSRS) (1997.01).

COORDINATES TO UTM ZONE 16
HAD 83 (CSRS) (1997.01).

COORDINATES TO UTM ZONE 16
HAD 83 (CSRS) (1997.01).

COORDINATES TO UTM ZONE 16
HAD 83 (CSRS) (1997.01).

COORDINATES TO UTM ZONE 16
HAD 83 (CSRS) (1997.01).

COORDINATES TO UTM ZONE 16
HAD 83 (CSRS) (1997.01).

COORDINATES TO UTM ZONE 16
HAD 83 (CSRS) (1997.01).

COORDINATES TO UTM ZONE 16
HAD 83 (CSRS) (1997.01).

COORDINATES TO UTM ZONE 16
HAD 83 (CSRS) (1997.01).

COORDINATES TO UTM ZONE 16
HAD 83 (CSRS) (1997.01).

COORDINATES TO UTM ZONE 16
HAD 83 (CSRS) (1997.01).

COORDINATES TO UTM ZONE 16
HAD 83 (CSRS) (1997.01).

COORDINATES TO UTM ZONE 16
HAD 83 (CSRS) (1997.01).

COORDINATES TO UTM ZONE 16
HAD 83 (CSRS) (1997.01).

COORDINATES TO UTM ZONE 16
HAD 83 (CSRS) (1997.01).

COORDINATES TO UTM ZONE 16
HAD 83 (CSRS) (1997.01).

COORDINATES TO UTM ZONE 16
HAD 83 (CSRS) (1997.01).

COORDINATES TO UTM ZONE 16
HAD 83 (CSRS) (1997.01).

COORDINATES TO UTM ZONE 16
HAD 83 (CSRS) (1997.01).

COORDINATES TO UTM ZONE 16
HAD 83 (CSRS) (1997.01).

COORDINATES TO UTM ZONE 16
HAD 83 (CSRS) (1997.01).

COORDINATES TO UTM ZONE 16
HAD 83 (CSRS) (1997.01).

COORDINATES TO UTM ZONE 16
HAD 83 (CSRS) (1997.01).

COORDINATES TO UTM ZONE 16
HAD 83 (CSRS) (1997.01).

COORDINATES TO UTM ZONE 16
HAD 83 (CSRS) (1997.01).

COORDINATES TO UTM ZONE 16
HAD 83 (CSRS) (1997.01).

COORDINATES TO UTM ZONE 16
HAD 83 (CSRS) (1997.01).

COORDINATES TO UTM ZONE 16
HAD 83 (CSRS) (1997.01).

COORDINATES TO UTM ZONE 16
HAD 83 (CSRS) (1997.01).

COORDINATES TO UTM ZONE 16
HAD 83 (CSRS) (1997.01).

COORDINATES TO UTM ZONE 16
HAD 83 (CSRS) (1997.01).

COORDINATES TO UTM ZONE 16
HAD 83 (CSRS) (1997.01).

COORDINATES TO UTM ZONE 16
HAD 83 (CSRS) (1997.01).

COORDINATES TO UTM ZONE 16
HAD 83 (CSRS) (1997.01).