



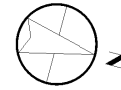
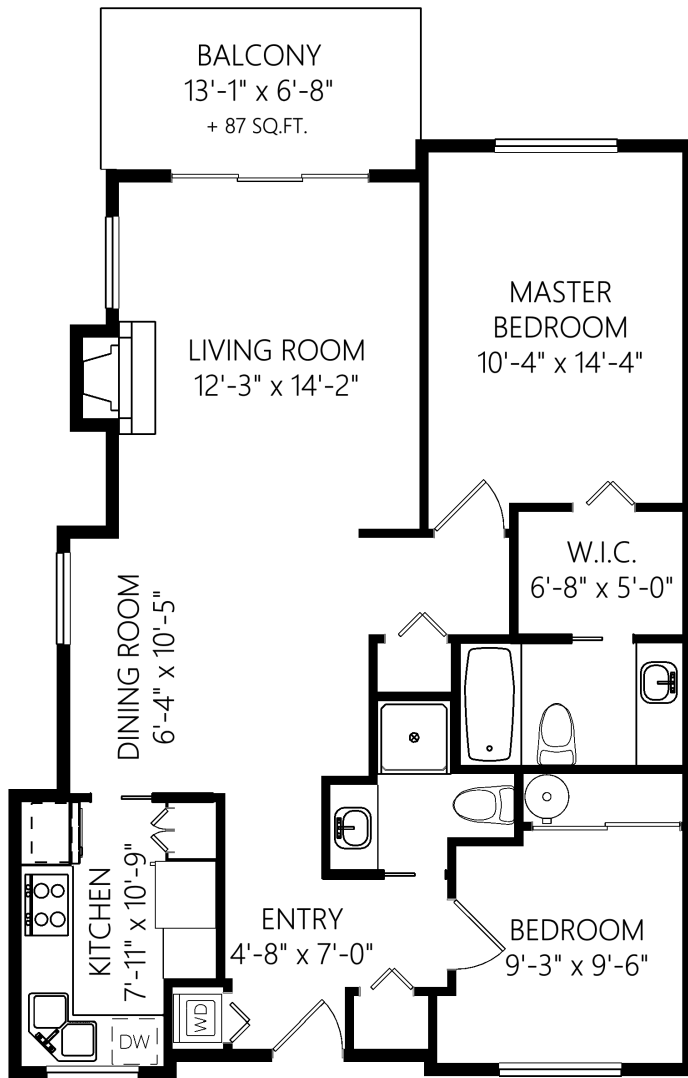
Ann Watley, Personal Real Estate Corporation

ann@annwatley.com <http://www.annwatley.com>
 Office: (250) 656-3486 Direct: (250) 656-3486

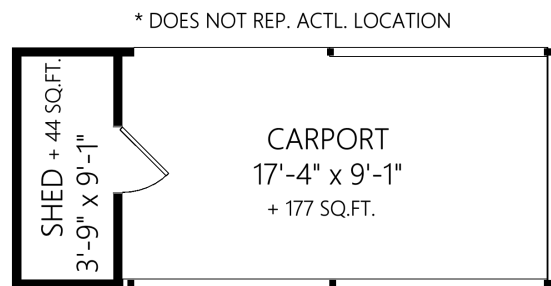


Pemberton Holmes Real Estate Ltd
 107-2360 Beacon Avenue
 Sidney, BC V8L 1X3

3665-1507 Queensbury Ave



SINGLE LEVEL
 933 FINISHED SQ.FT.
 + ADDNL. SQ.FT. WHERE NOTED



	Fin. Sq.Ft.	UnFin. Sq.Ft.	Total Sq.Ft.
Single Level	933	0	933
Total	933	0	933

Shown length and width dimensions are approximate.
 Area sq.ft. is representative of the on-site measurements. (1" accuracy)



Figures, Calculations, and Representations are for indicative and promotional purpose only.
 VI Standard Real Estate Services Inc. will not be liable for any damages of any kind arising from the mis-use of this information.