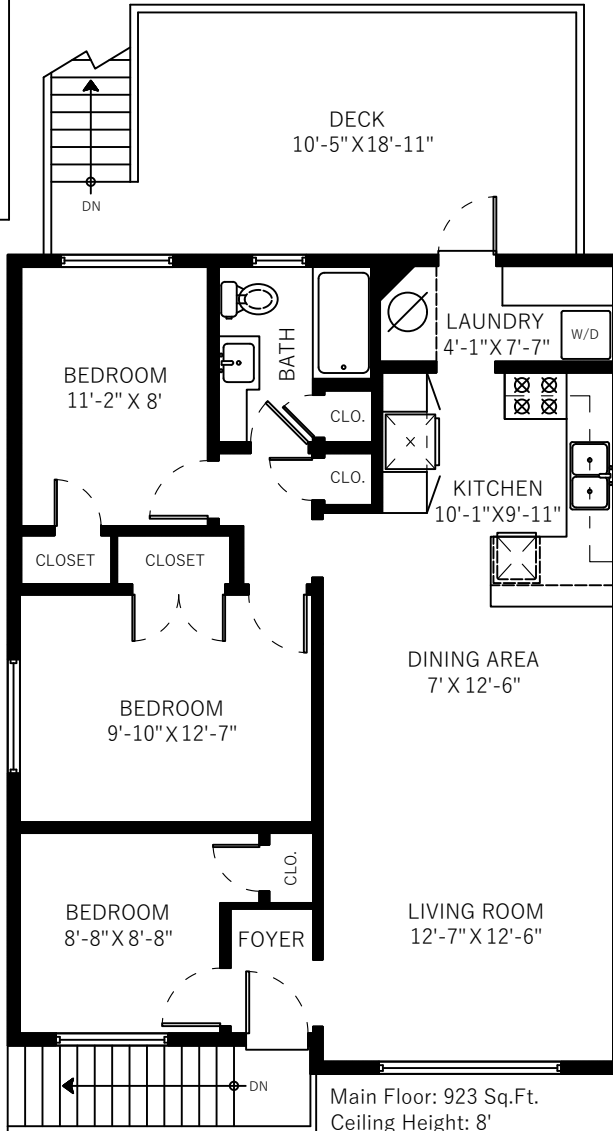
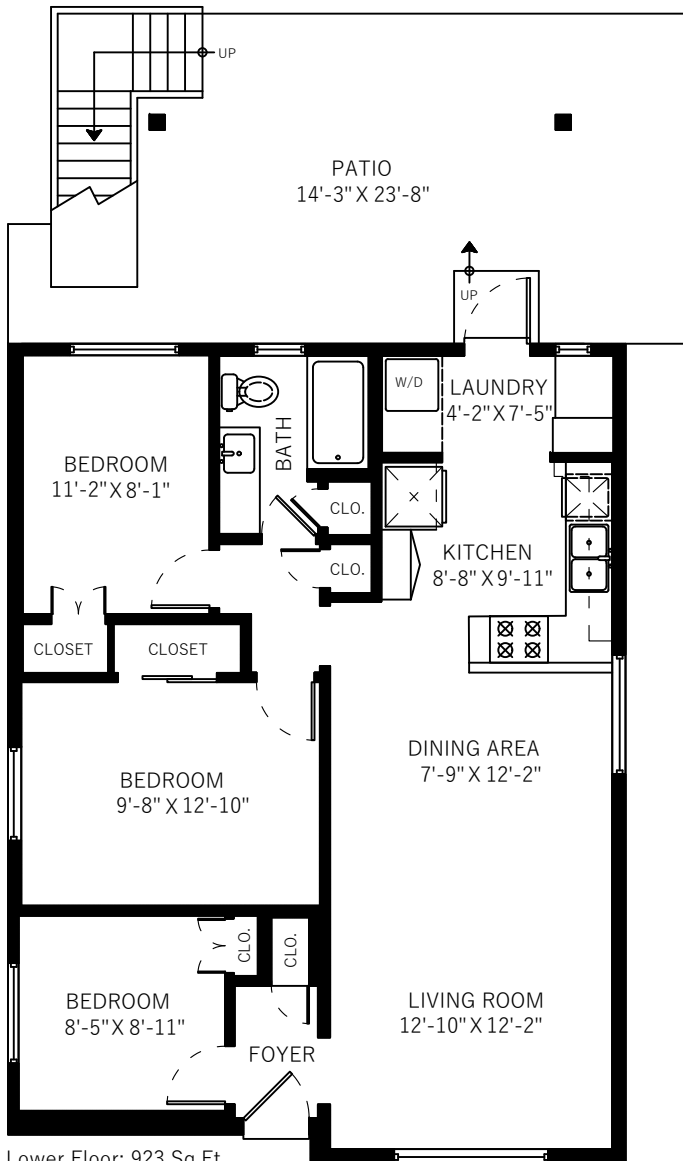


1834 Napier St Vancouver, BC

Main Floor	923 SQ.FT.
Lower Floor	923 SQ.FT.
Total	1846 SQ.FT.

Patio	345 SQ.FT.
Deck	222 SQ.FT.
Garage	491 SQ.FT.
Total Extras	1058 SQ.FT.



FT 0 1 2 3
 M 0 1

