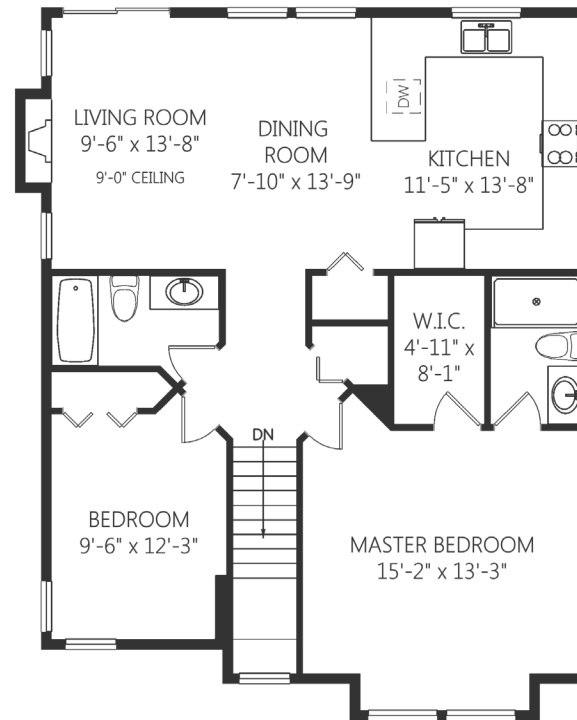
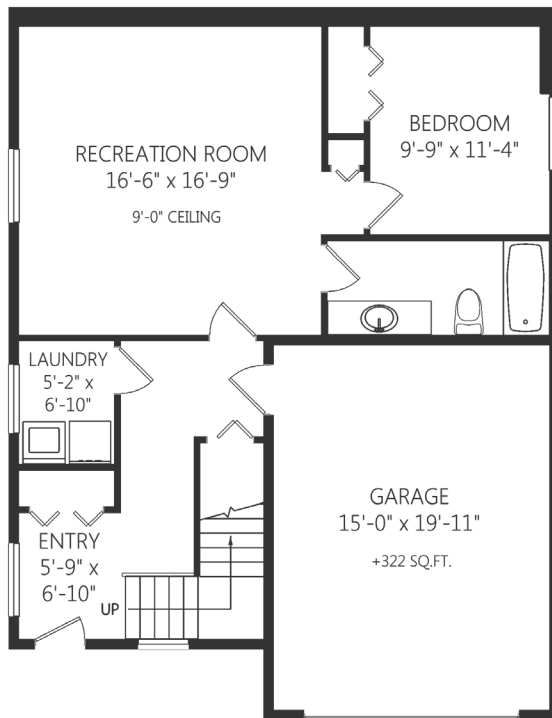


*MEASURED DURING CONSTRUCTION,
FINAL DIMENSIONS MAY DIFFER



- 3 bedrooms, 3 bathrooms
- Main level up with spacious kitchen
- Family room on the ground level
- Oversize single garage

This spacious 3-bedroom homes offers large rooms, a spacious kitchen with eating bar that invites friends to hang around, and a great room with plenty of windows. The lower level with its large family room, bathroom, and bedroom is ideal for kids or for guests. Enjoy quality details in this great home including quartz counters, 9' ceilings, Rinnai direct vent gas heating, a cozy gas fireplace, and gas-fired on demand hot water.

Thetis Glen Phase 7 is a new development of thirty-five well-designed homes offering exceptional value by The Limona Group. Adjacent to green space, only a short walk to Thetis Lake Park, with easy access to shopping, schools and recreation, Thetis Glen is a great place to call home. NO PROPERTY TRANSFER TAX FOR QUALIFIED BUYERS!

Lot 2 - 2408 Chilco Rd

Total Liveable Space: 1,908 sq.ft.

Upper Floor: 1,112 sq.ft. | Lower Floor: 796 sq.ft. | Garage: 322 sq.ft.

The Preferred Homes Team, RE/MAX Camosun | 250-220-5061 or 1-800-663-2121 | www.thetisglen.com

The house, its details and dimensions may vary from this plan and those plans demonstrated on the Web site. The seller reserves the right to make changes or modifications as required during the construction process.

