



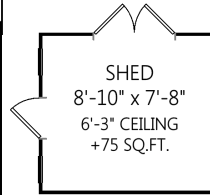
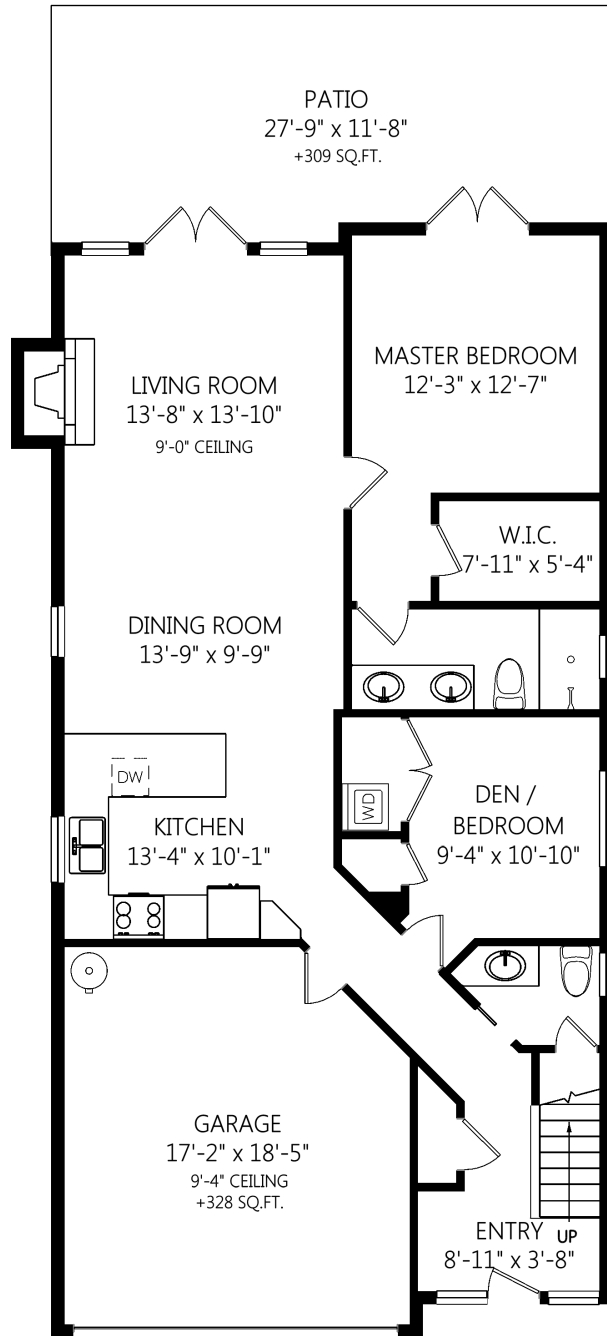
Ann Watley, Personal Real Estate Corporation

ann@annwatley.com <http://www.annwatley.com>
 Office: (250) 656-3486 Direct: (250) 656-3486



Pemberton Holmes Real Estate Ltd
 107-2360 Beacon Avenue
 Sidney, BC V8L 1X3

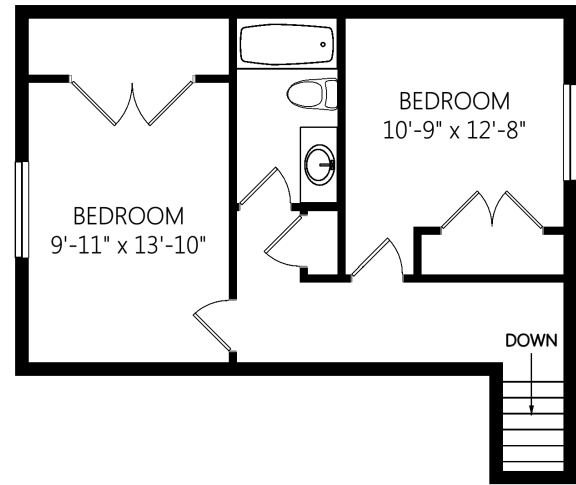
1932 Brackman Way



* DOES NOT REP. ACTL. LOCATION

UPPER LEVEL

513 FINISHED SQ.FT.
 + ADDNL. SQ.FT. WHERE NOTED



MAIN LEVEL

1178 FINISHED SQ.FT.
 + ADDNL. SQ.FT. WHERE NOTED



	Fin. Sq.Ft.	UnFin. Sq.Ft.	Total Sq.Ft.
Garage	0	328	328
Main Level	1178	0	1178
Upper Level	513	0	513
Total	1691	328	2019

Shown length and width dimensions are approximate.
 Area sq.ft. is representative of the on-site measurements. (1" accuracy)



Figures, Calculations, and Representations are for indicative and promotional purpose only.
 VI Standard Real Estate Services Inc. will not be liable for any damages of any kind arising from the mis-use of this information.