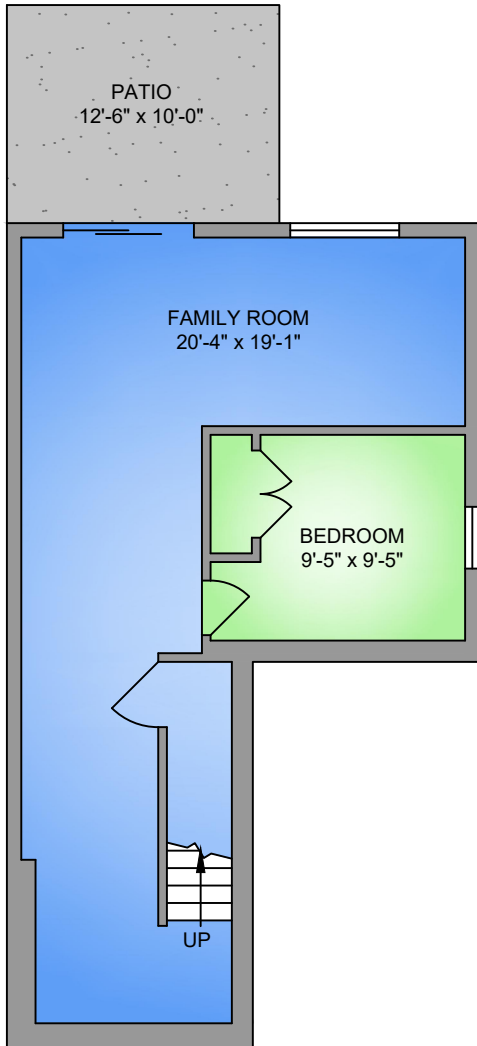


LOWER FLOOR

636 SQ. FT.

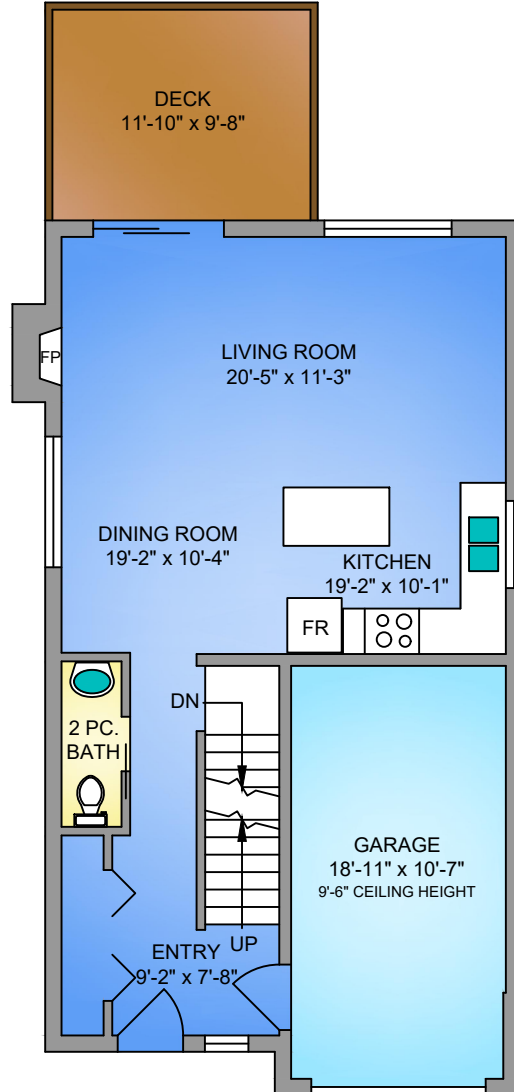
9' CEILING HEIGHT



MAIN FLOOR

647 SQ. FT.

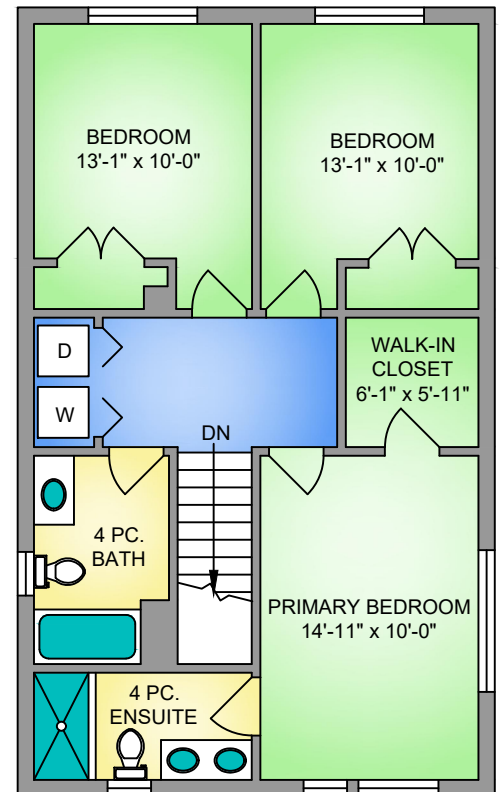
9' CEILING HEIGHT



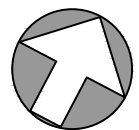
UPPER FLOOR

792 SQ. FT.

8' CEILING HEIGHT



NORTH



THE
PREFERRED HOMES TEAM
www.PreferredHomes.ca **RE/MAX**CAMOSUN



propermeasure.com | 250.884.9753
matt@propermeasure.com



Limona Homes at Walfred

3473 MYLES MANSELL ROAD MAY 13, 2021			
PREPARED FOR THE EXCLUSIVE USE OF THE PREFERRED HOMES TEAM PLANS MAY NOT BE 100% ACCURATE, IF CRITICAL BUYER TO VERIFY.			
FLOOR	AREA (SQ. FT.)		
	FINISHED	GARAGE	DECK / PATIO
UPPER	792	-	-
MAIN	647	210	114
LOWER	636	-	125
TOTAL	2075	210	239