



Ann Watley, Personal Real Estate Corporation

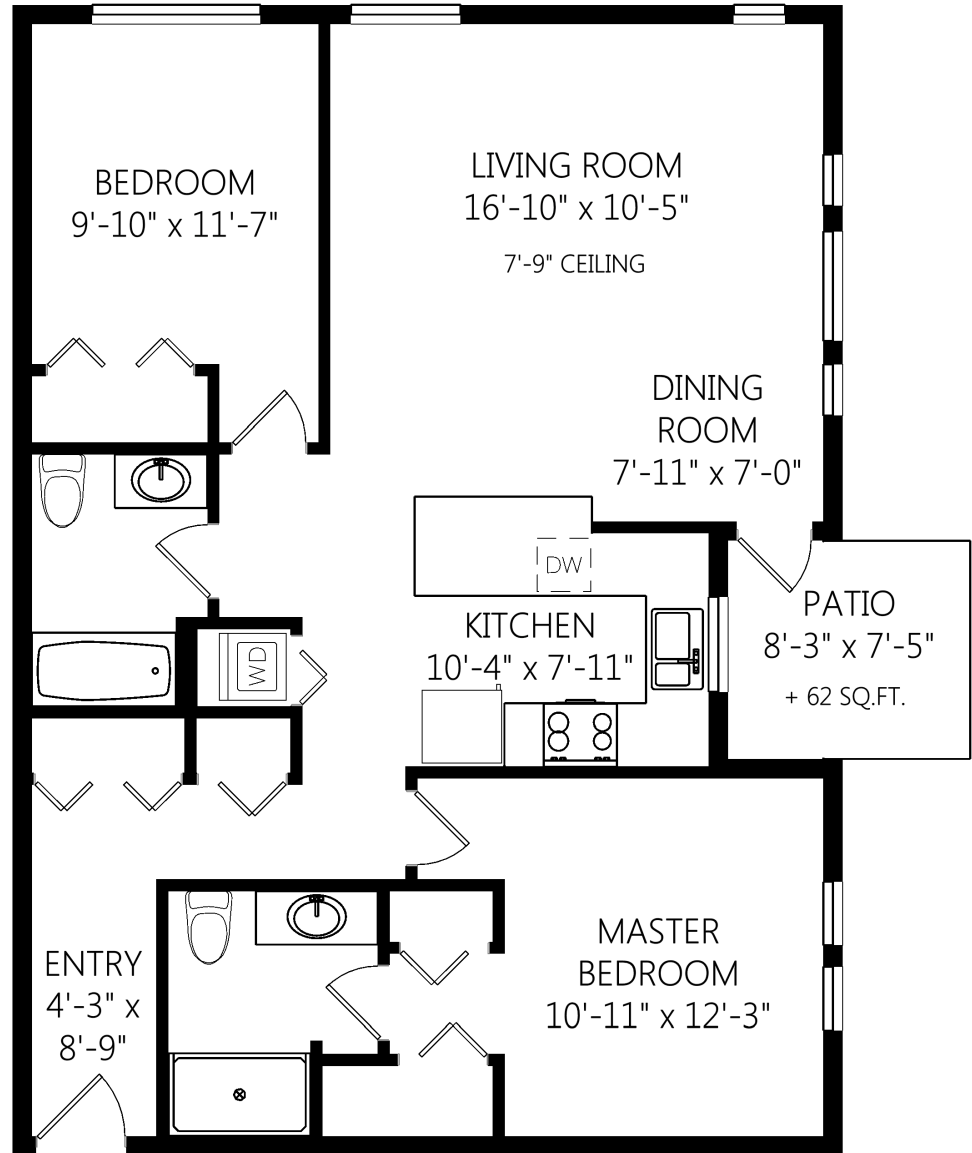
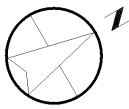
ann@annwatley.com <http://www.annwatley.com>
 Office: (250) 656-3486 Direct: (250) 656-3486



Pemberton Holmes Real Estate Ltd
 107-2360 Beacon Avenue
 Sidney, BC V8L 1X3

105-1514 Church Ave

SINGLE LEVEL
 1040 FINISHED SQ.FT.
 + ADDNL. SQ.FT. WHERE NOTED



	Fin. Sq.Ft.	UnFin. Sq.Ft.	Total Sq.Ft.
Single Level	1040	0	1040
Total	1040	0	1040

Shown length and width dimensions are approximate.
 Area sq.ft. is representative of the on-site measurements. (1" accuracy)



Figures, Calculations, and Representations are for indicative and promotional purpose only.
 VI Standard Real Estate Services Inc. will not be liable for any damages of any kind arising from the mis-use of this information.