

Phil & Sonia LeGree

Keller Williams Realty

VanCentral

Cell: (604) 518 - 1644

Cell: (778) 848 - 3658

plegree@gmail.com

sonialegree@gmal.com

www.phillegree.realtor



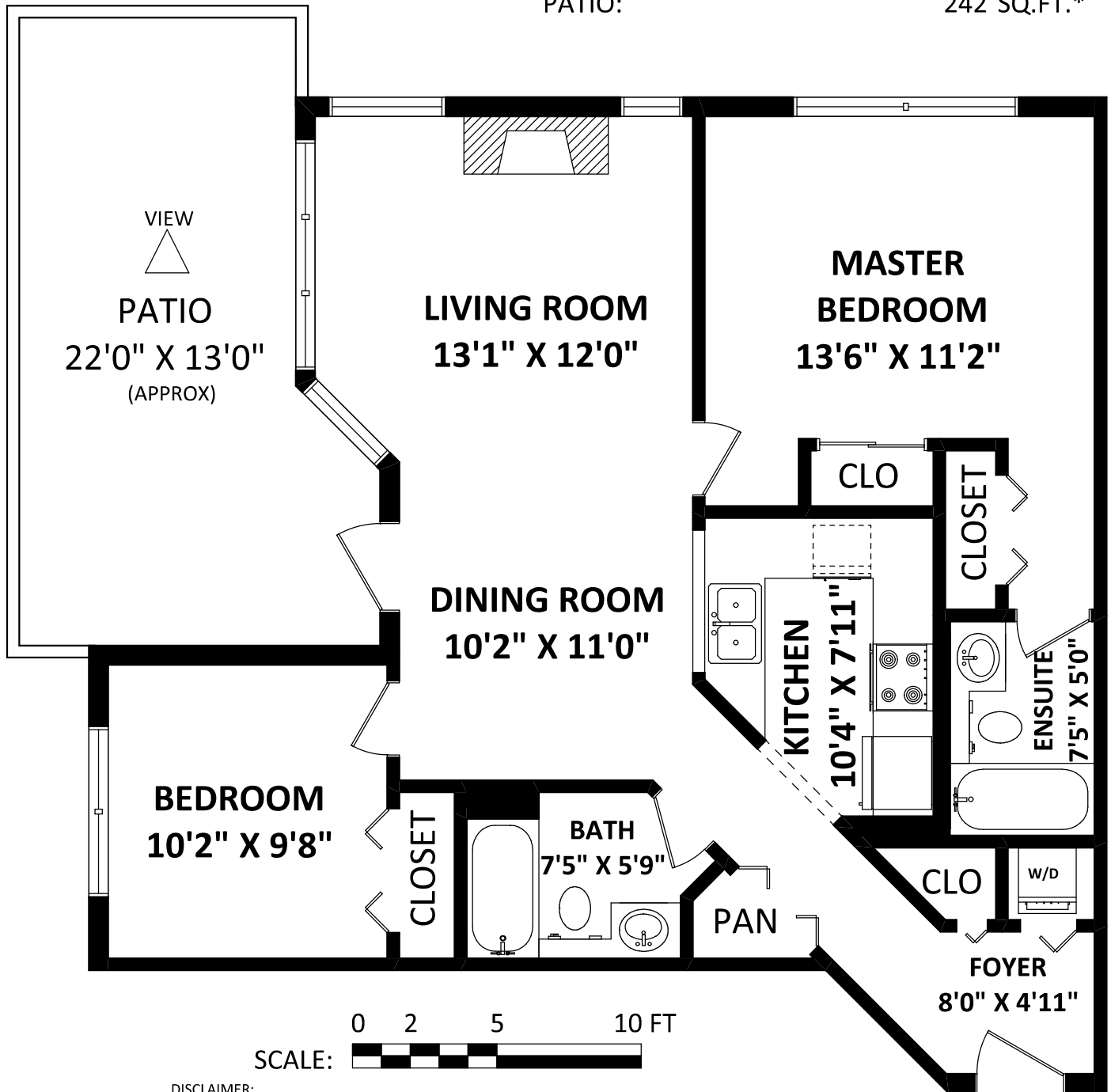
#219 3608 Deercree Drive,  
North Vancouver, BC

TOTAL FINISHED AREA: 916 SQ.FT.

OTHER AREA(S)

PATIO:

242 SQ.FT.\*



DISCLAIMER:

1. MEASUREMENTS ARE FOR PROMOTIONAL USE ONLY & ARE NOT INTENDED FOR CONSTRUCTION USE. ROOM DIMENSIONS ARE APPROXIMATE. MEASUREMENTS & CALCULATIONS FOR FINISHED AREAS ARE E&O INSURED.
  2. FINISHED AREAS ARE ENCLOSED AREAS IN A HOUSE THAT ARE SUITABLE FOR YEAR-ROUND USE, EMBODYING WALLS, FLOORS, AND CEILINGS THAT ARE SIMILAR TO THE REST OF THE HOUSE. (ANSI Z765-2003)
  3. THIS FLOOR PLAN MAY ONLY BE REPRODUCED WITH PERMISSION OF THE REALTOR(S) ON THIS FLOOR PLAN.
- \* ANY MEASUREMENT WITH AN ASTERISK (\*) OR (APPROX) ARE APPROXIMATE AND FOR ILLUSTRATION PURPOSES ONLY AND ARE NOT E&O INSURED.



FLOOR PLAN BY:

[AUGUST 15, 2017]



TEL: 604-575-1244

www.seevirtual360.com