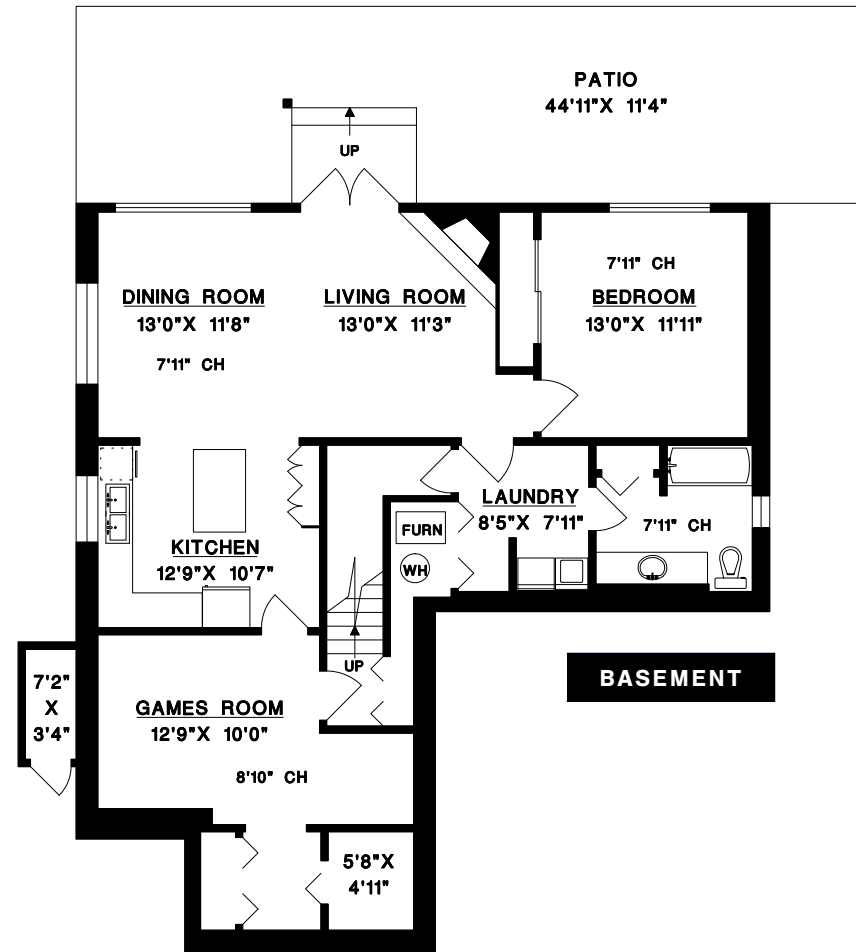
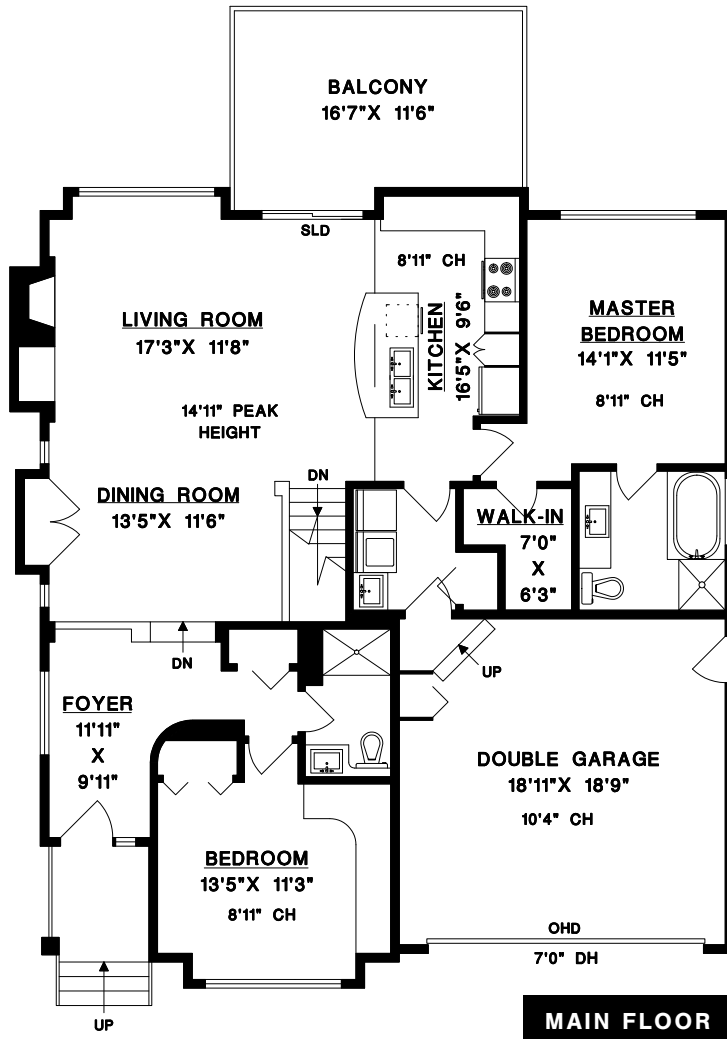


22375 50 Avenue,
 Langley, BC

Main Floor: 1,368 sq. ft.
 Basement: 1,305 sq. ft.
Finished Area: 2,673 sq. ft.

Garage: 371 sq. ft.
 Balcony: 189 sq. ft.
 Patio: 509 sq. ft.
 Shed: 24 sq. ft.



1' 6"
 SCALE

DRAWN BY: CN
 DATE: SEPTEMBER 2020
 REVISED: