



CREATING  
EXTRAORDINARY  
EXPERIENCES

Dan Pigott

604.862.4124

dan@pigottproperties.com

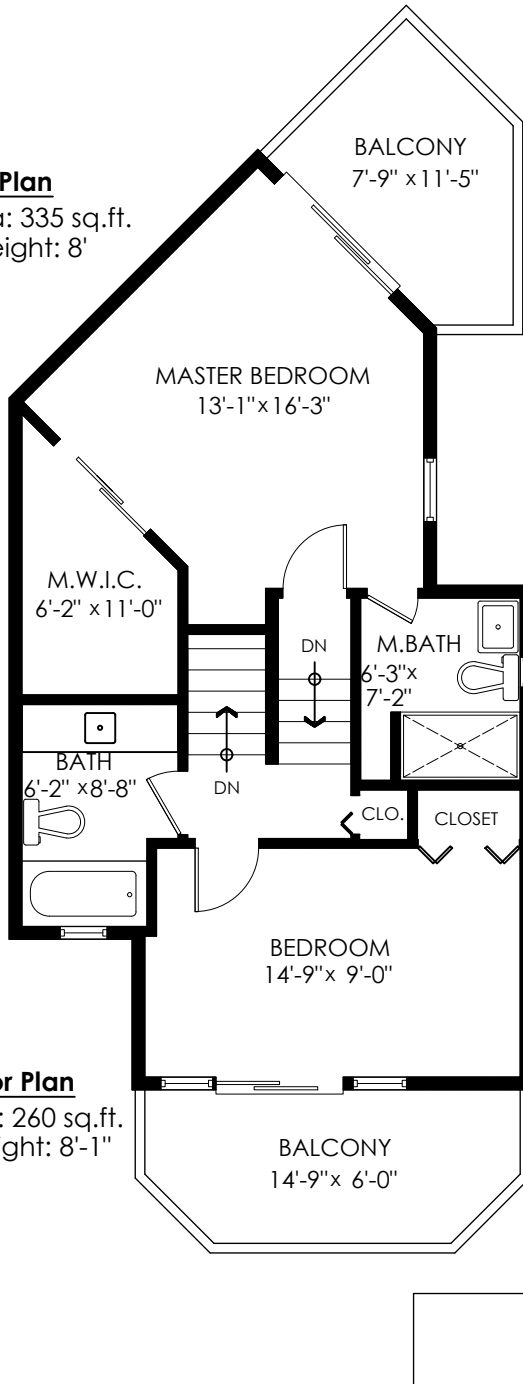
8-249 4th St E,  
North Vancouver

Main Floor:	544 sq.ft.
Upper Floor:	260 sq.ft.
Top Floor:	335 sq.ft.
Entry Floor:	59 sq.ft.
<b>Total:</b>	<b>1,198 sq.ft.</b>

Balconies: 258 sq.ft.

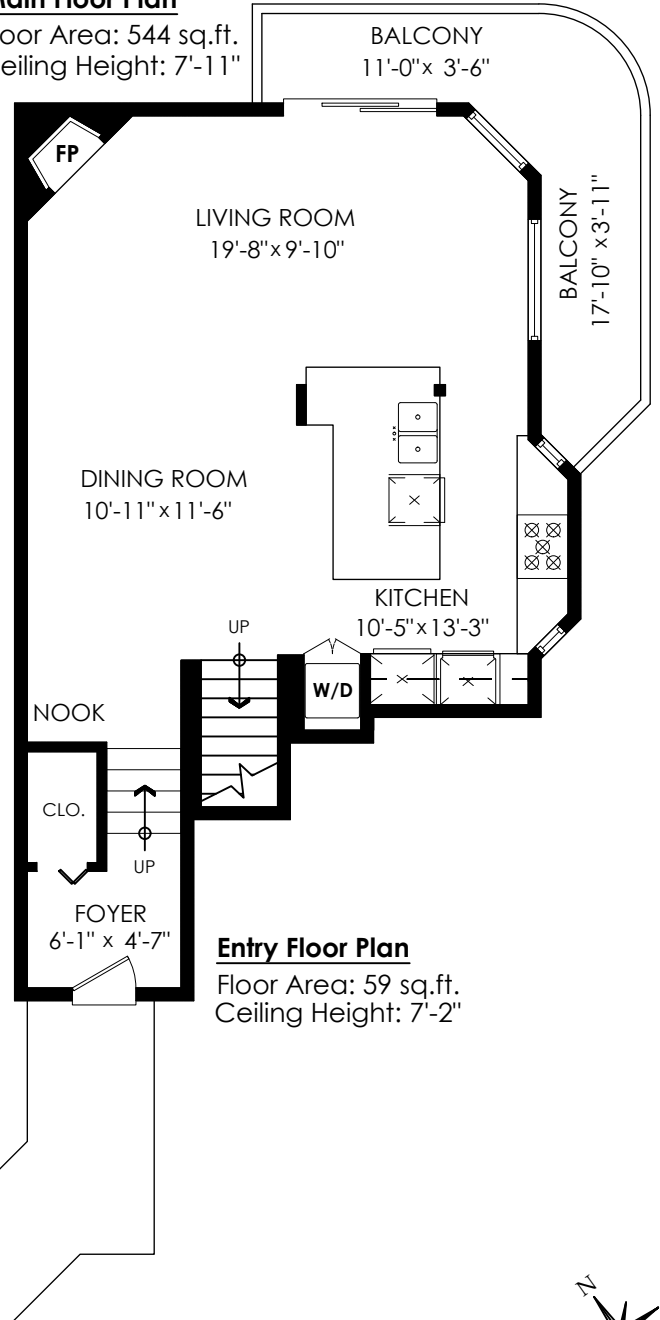
**Top Floor Plan**

Floor Area: 335 sq.ft.  
Ceiling Height: 8'



**Main Floor Plan**

Floor Area: 544 sq.ft.  
Ceiling Height: 7'-11"



**Entry Floor Plan**

Floor Area: 59 sq.ft.  
Ceiling Height: 7'-2"

**Upper Floor Plan**

Floor Area: 260 sq.ft.  
Ceiling Height: 8'-1"



Measurements, Design & Scanning | 604-329-5788

E&O Insured. Total square foot calculated to gross unit area, SQFT based on interior measurements to exterior walls, not taken from original blueprints, may include unfinished area. This is for marketing purposes only and is not intended for architectural/construction use. All details, sizes & placements should be considered approximate within +/- 2% tolerance. [www.PixlWorks.com](http://www.PixlWorks.com)

