



TOTAL FINISHED AREA: 2297 SQ.FT.

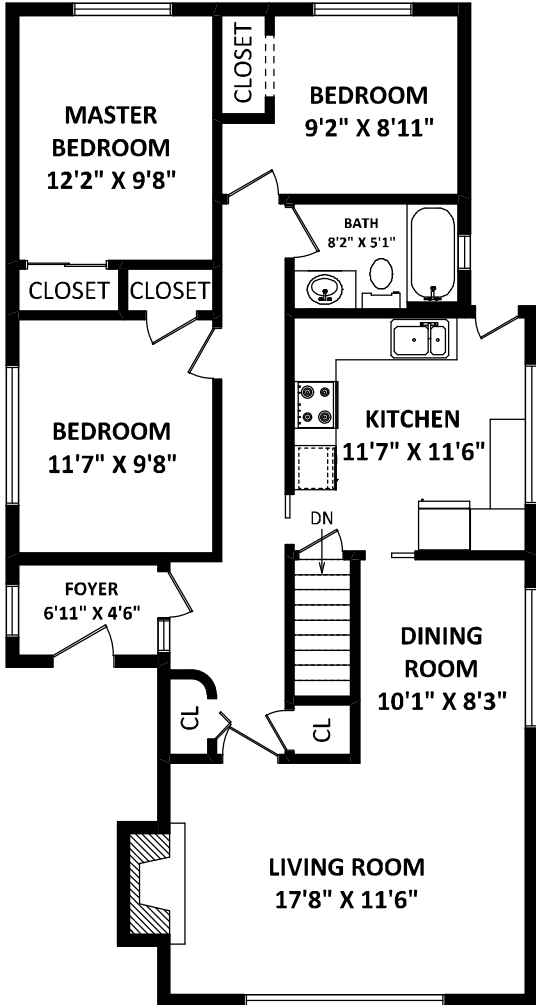
**3323 Napier Street,
Vancouver, BC**

OTHER AREA(S)

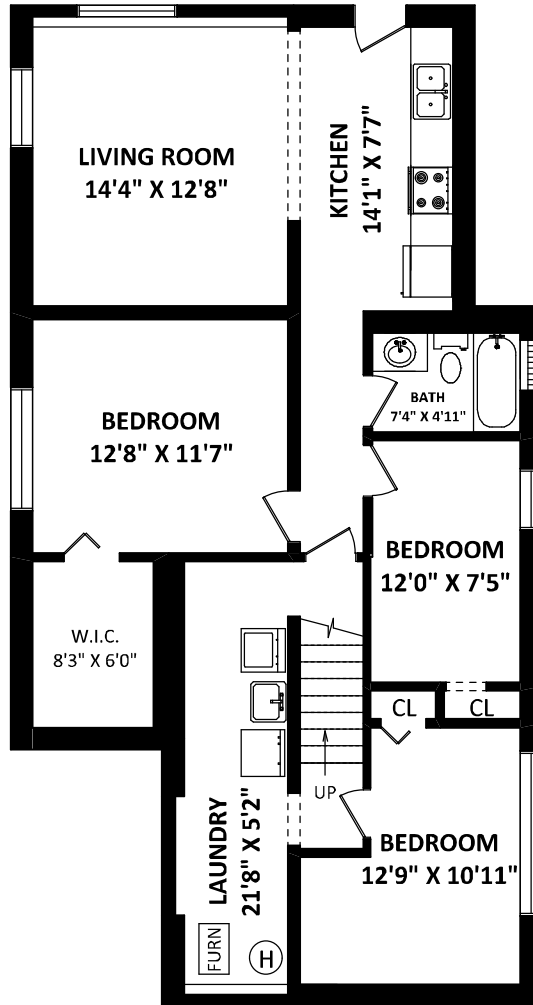
GARAGE: 282 SQ.FT.

BRIAN, ROSALEE, SHANNON & JAMIE

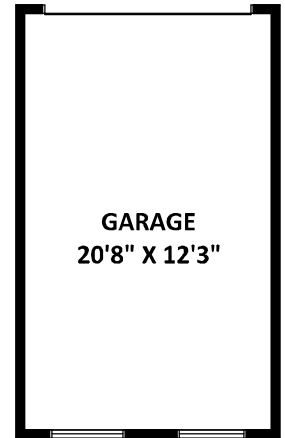
RE/MAX Select Properties
 Cell: 604-785-4324
 Office: 604-737-8865
 info@yourhomevancouver.ca
 www.yourhomevancouver.ca



MAIN FLOOR: 1134 SQ.FT.



LOWER FLOOR: 1163 SQ.FT.



FLOOR PLAN BY:
 [JULY 13, 2016]

 TEL: 604-575-1244
 www.seevirtual360.com

DISCLAIMER:
 1. MEASUREMENTS ARE FOR PROMOTIONAL USE ONLY & ARE NOT INTENDED FOR CONSTRUCTION USE. ROOM DIMENSIONS ARE APPROXIMATE. MEASUREMENTS & CALCULATIONS FOR FINISHED AREAS ARE E&O INSURED.
 2. FINISHED AREAS ARE ENCLOSED AREAS IN A HOUSE THAT ARE SUITABLE FOR YEAR-ROUND USE, EMBODYING WALLS, FLOORS, AND CEILINGS THAT ARE SIMILAR TO THE REST OF THE HOUSE. (ANSI Z765-2003)
 3. THIS FLOOR PLAN MAY ONLY BE REPRODUCED WITH PERMISSION OF THE REALTOR(S) ON THIS FLOOR PLAN.
 * ANY MEASUREMENT WITH AN ASTERISK (*) OR (APPROX) ARE APPROXIMATE AND FOR ILLUSTRATION PURPOSES ONLY AND ARE NOT E&O INSURED.



SCALE: 0 2 5 10 FT