



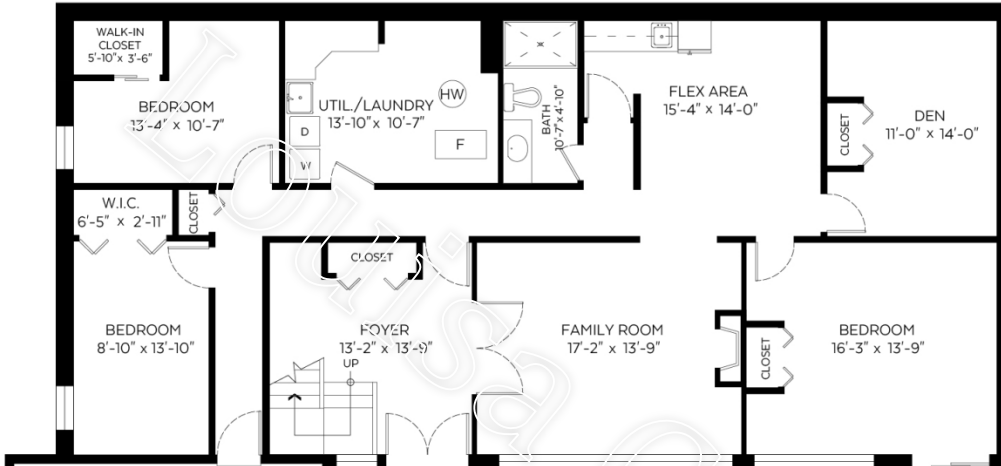
Floorplans ~ 9301 Orchard Ridge Dr.



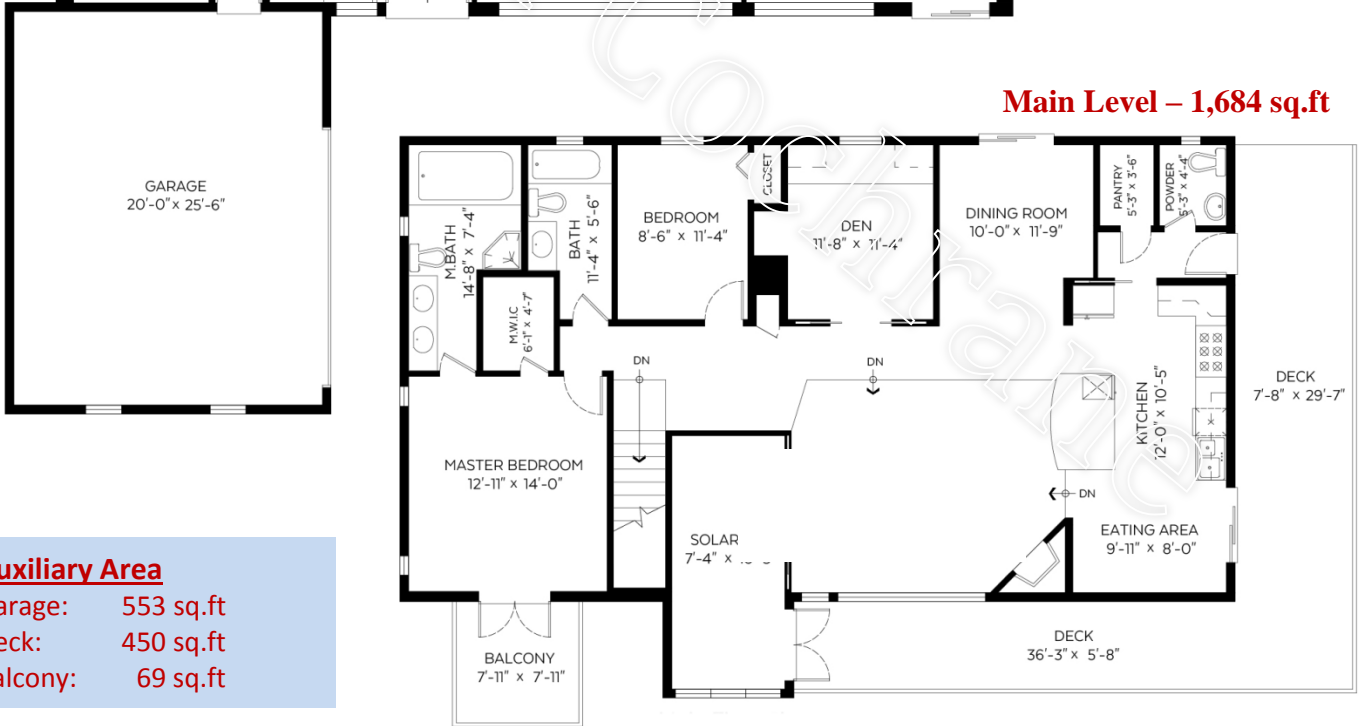
Louisa
Cochrane

Lower Level – 1,863 sq.ft

Heather Angel
Licensed Realtor®



Main Level – 1,684 sq.ft



Auxiliary Area

- Garage: 553 sq.ft
- Deck: 450 sq.ft
- Balcony: 69 sq.ft

Total – 3,547 Finished SqFt

Royal LePage Downtown Realty
4007 – 32nd St., Vernon BC V1T 5P2



www.louisacochrane.com

Office# - 778.475.1089 * Cell# - 250.550.6561 * Email - Louisa@realvernon.ca