



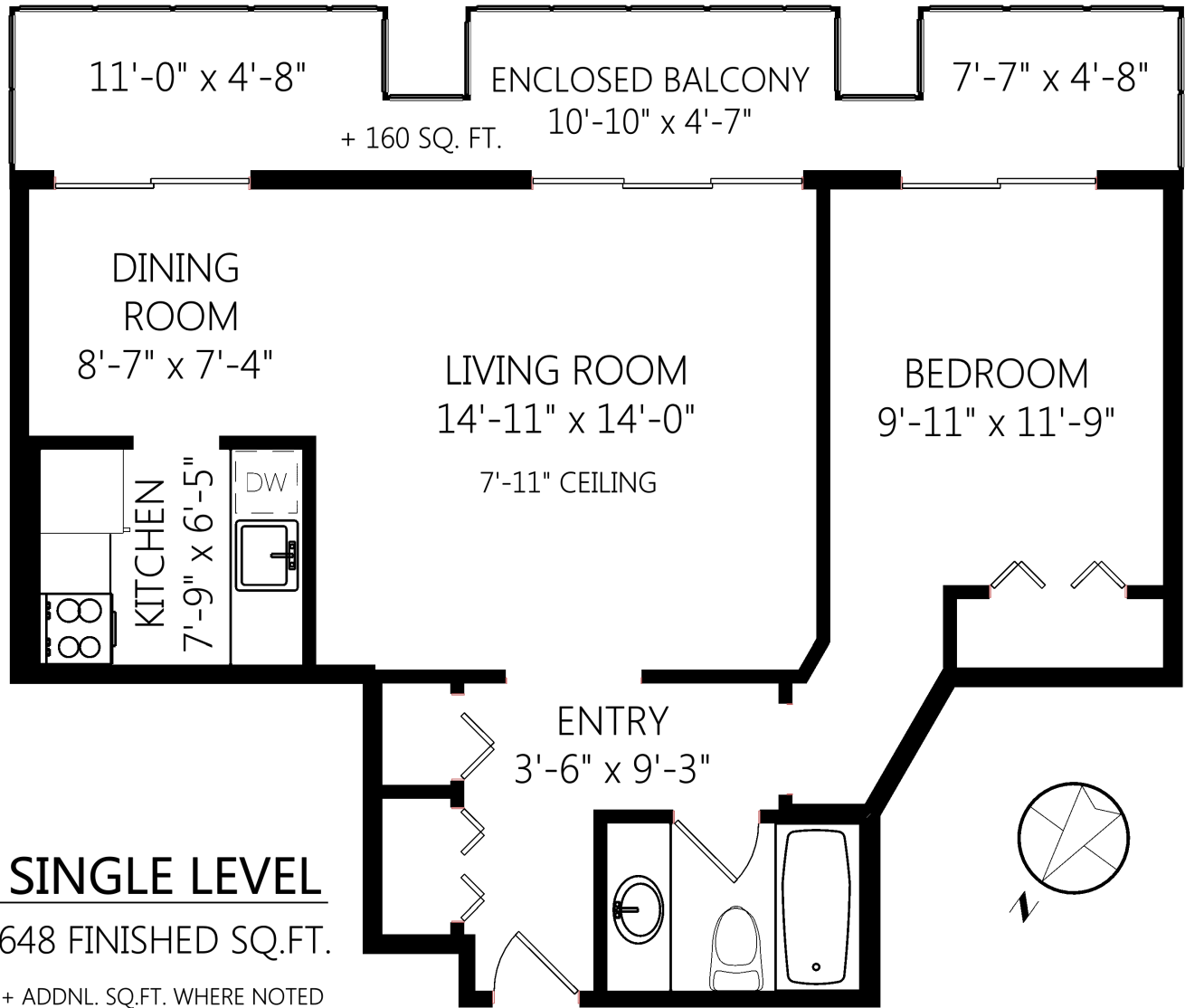
Ann Watley, Personal Real Estate Corporation

ann@annwatley.com <http://www.annwatley.com>
 Office: (250) 656-3486 Direct: (250) 656-3486



Pemberton Holmes Real Estate Ltd
 107-2360 Beacon Avenue
 Sidney, BC V8L 1X3

217-1009 McKenzie Ave



SINGLE LEVEL

648 FINISHED SQ.FT.

+ ADDNL. SQ.FT. WHERE NOTED

	Fin. Sq.Ft.	UnFin. Sq.Ft.	Total Sq.Ft.
Single Level	648	0	648
Total	648	0	648

Shown length and width dimensions are approximate.
 Area sq.ft. is representative of the on-site measurements. (1" accuracy)



Figures, Calculations, and Representations are for indicative and promotional purpose only.
 VI Standard Real Estate Services Inc. will not be liable for any damages of any kind arising from the mis-use of this information.