



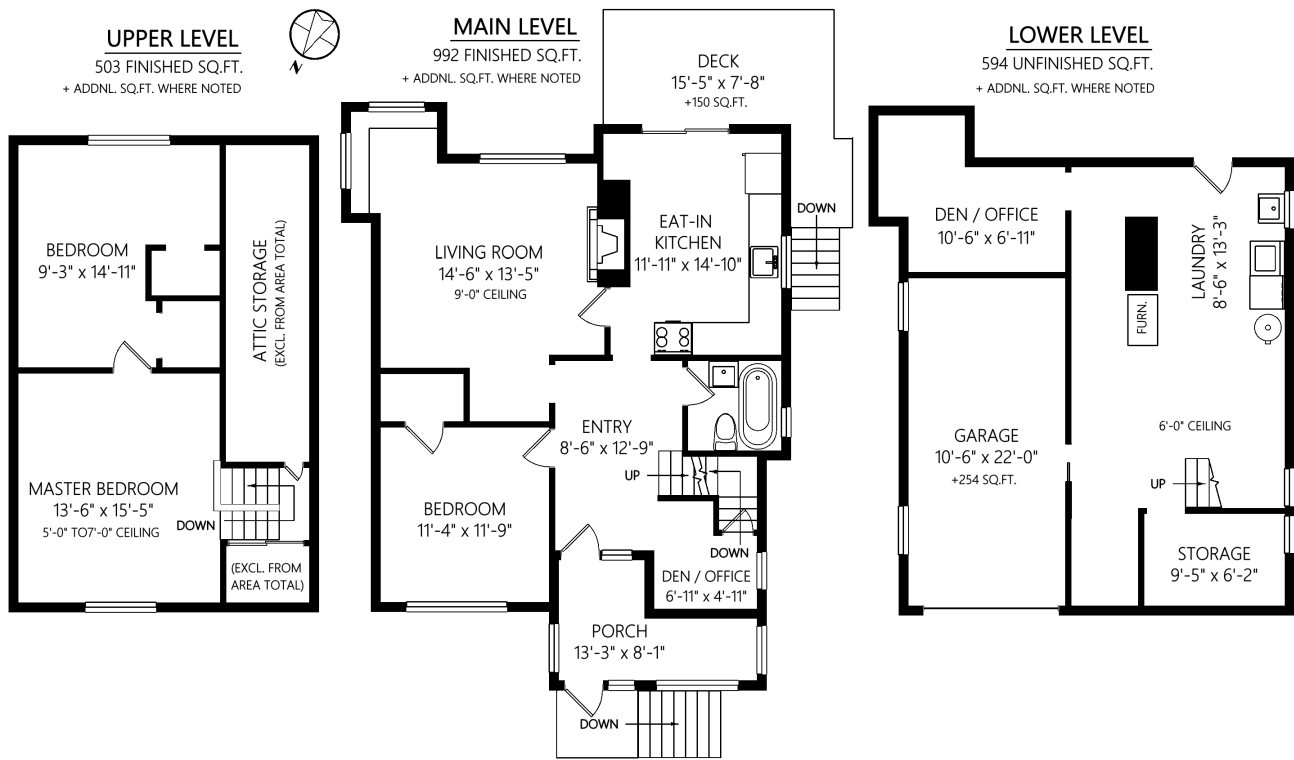
Ann Watley, Personal Real Estate Corporation

ann@annwatley.com <http://www.annwatley.com>
 Office: (250) 656-3486 Direct: (250) 656-3486



Pemberton Holmes Real Estate Ltd
 107-2360 Beacon Avenue
 Sidney, BC V8L 1X3

1557 Oakland Ave



	Fin. Sq.Ft.	UnFin. Sq.Ft.	Total Sq.Ft.
Upper Level	503	0	503
Main Level	992	0	992
Lower Level	0	594	594
Garage	0	254	254
Total	1495	848	2343

Shown length and width dimensions are approximate.
 Area sq.ft. is representative of the on-site measurements. (1" accuracy)



Figures, Calculations, and Representations are for indicative and promotional purpose only.
 VI Standard Real Estate Services Inc. will not be liable for any damages of any kind arising from the mis-use of this information.