



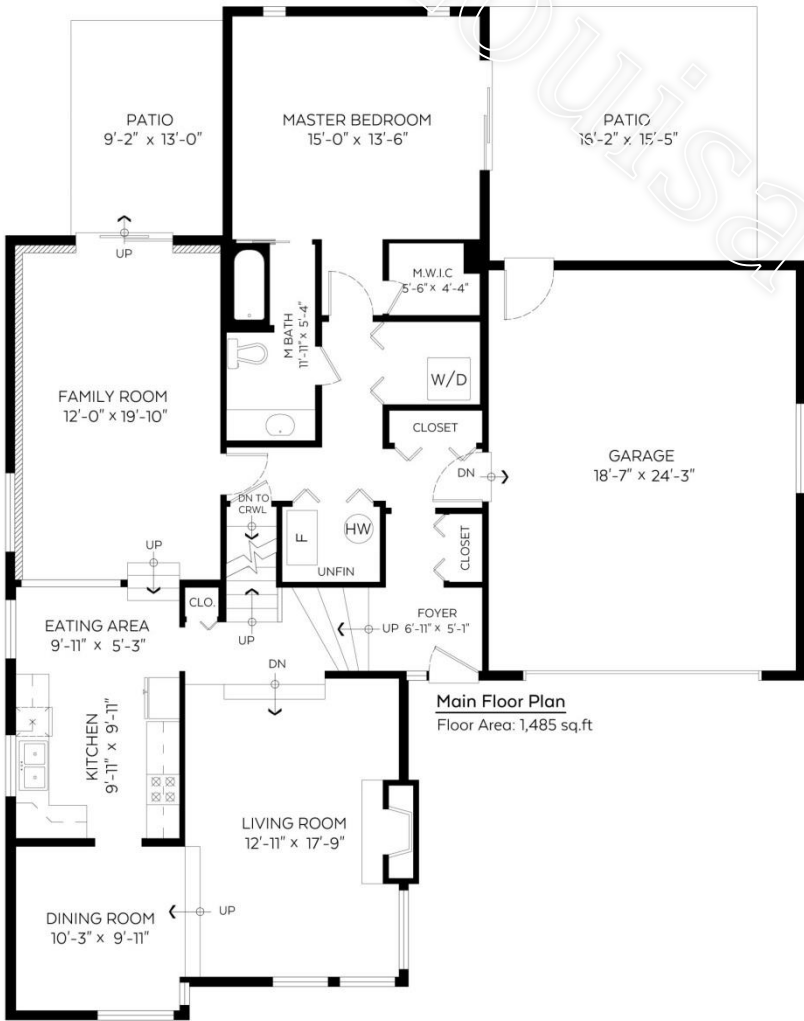
# Floorplans ~ 7806 Corona Court



Heather Angel



**Auxiliary Area**  
 Garage: 488 sq.ft  
 Patios: 369 sq.ft



**Total – 2,106 Finished SqFt**

Royal LePage Downtown Realty  
4007 – 32<sup>nd</sup> St., Vernon BC V1T 5P2



[www.louisacochrane.com](http://www.louisacochrane.com)

Office# - 778.475.1089 \* Cell# - 250.550.6561 \* Email - [Louisa@realvernon.ca](mailto:Louisa@realvernon.ca)