

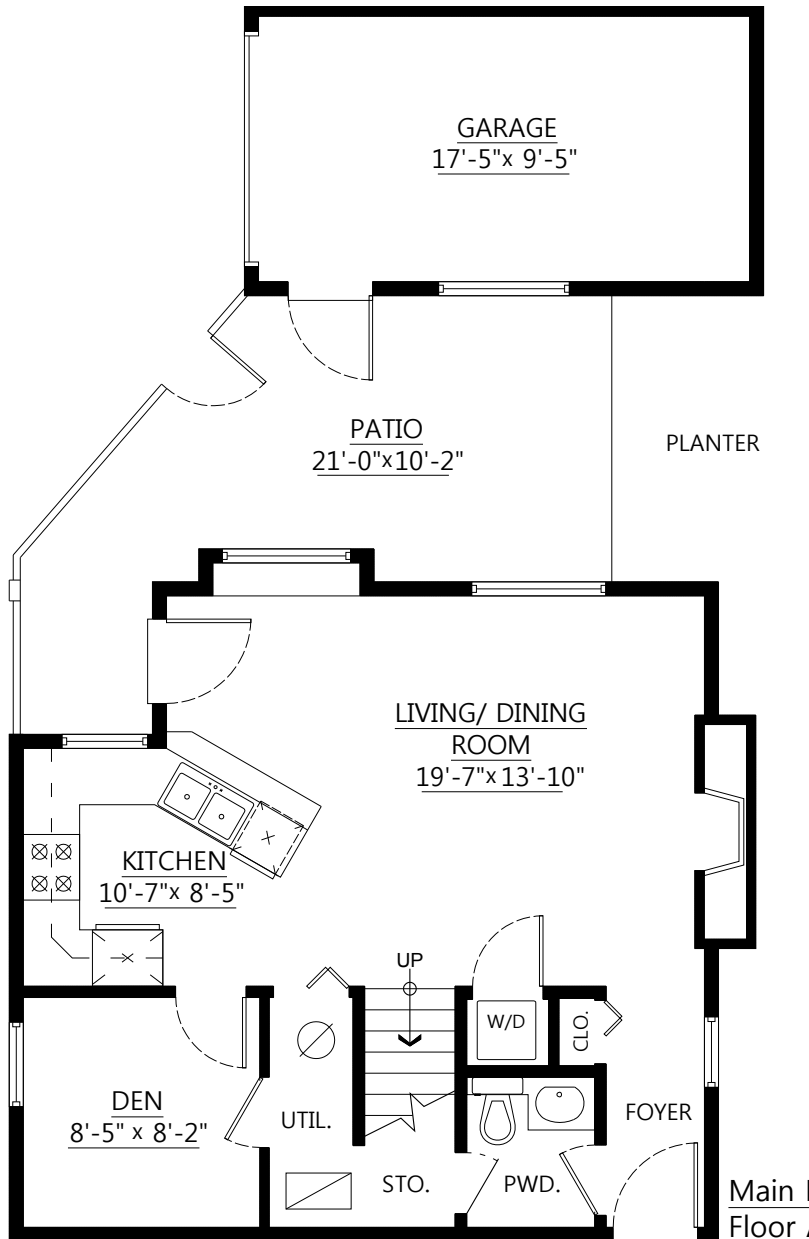
JAMESBUONASSISI

KW VANCENTRAL | KELLERWILLIAMS.REALTY

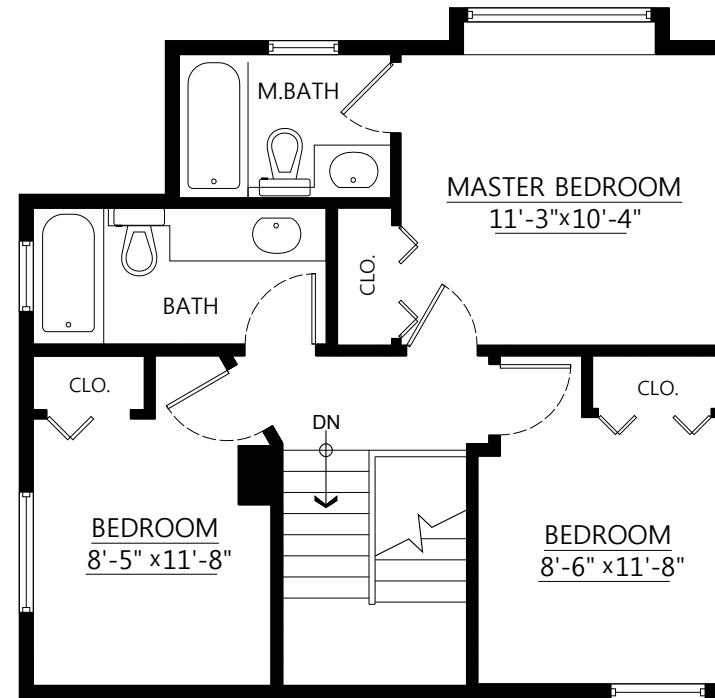
1932 Turner Street,
Vancouver, B.C.

Main Floor: 563 sq.ft.
Lower Floor: 563 sq.ft.
Total: 1,126 sq.ft.

Garage: 192 sq.ft.
Patio: 206 sq.ft.
Planter: 75 sq.ft.



Main Floor Plan
Floor Area: 563 sq.ft.



Upper Floor Plan
Floor Area: 563 sq.ft.

