



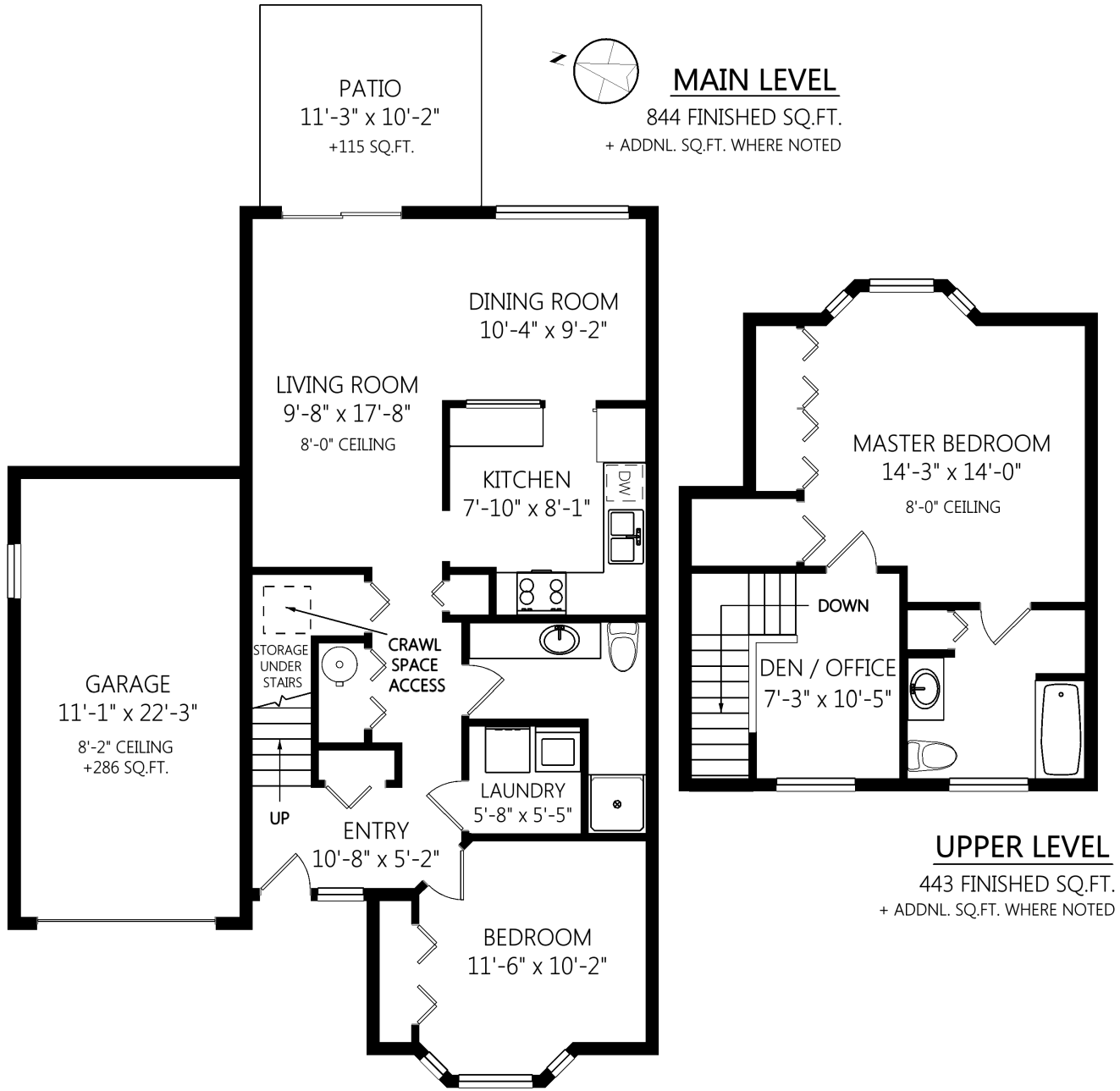
# Ann Watley, Personal Real Estate Corporation

ann@annwatley.com <http://www.annwatley.com>  
 Office: (250) 656-3486 Direct: (250) 656-3486



Pemberton Holmes Real Estate Ltd  
 107-2360 Beacon Avenue  
 Sidney, BC V8L 1X3

40-2147 Sooke Rd



	Fin. Sq.Ft.	UnFin. Sq.Ft.	Total Sq.Ft.
Garage	0	286	286
Main Level	844	0	844
Upper Level	443	0	443
<b>Total</b>	<b>1287</b>	<b>286</b>	<b>1573</b>

Shown length and width dimensions are approximate.  
 Area sq.ft. is representative of the on-site measurements. (1" accuracy)



Figures, Calculations, and Representations are for indicative and promotional purpose only.  
 VI Standard Real Estate Services Inc. will not be liable for any damages of any kind arising from the mis-use of this information.