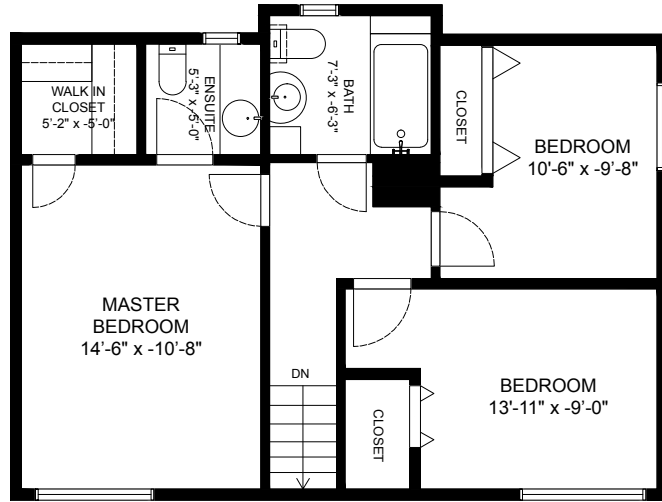


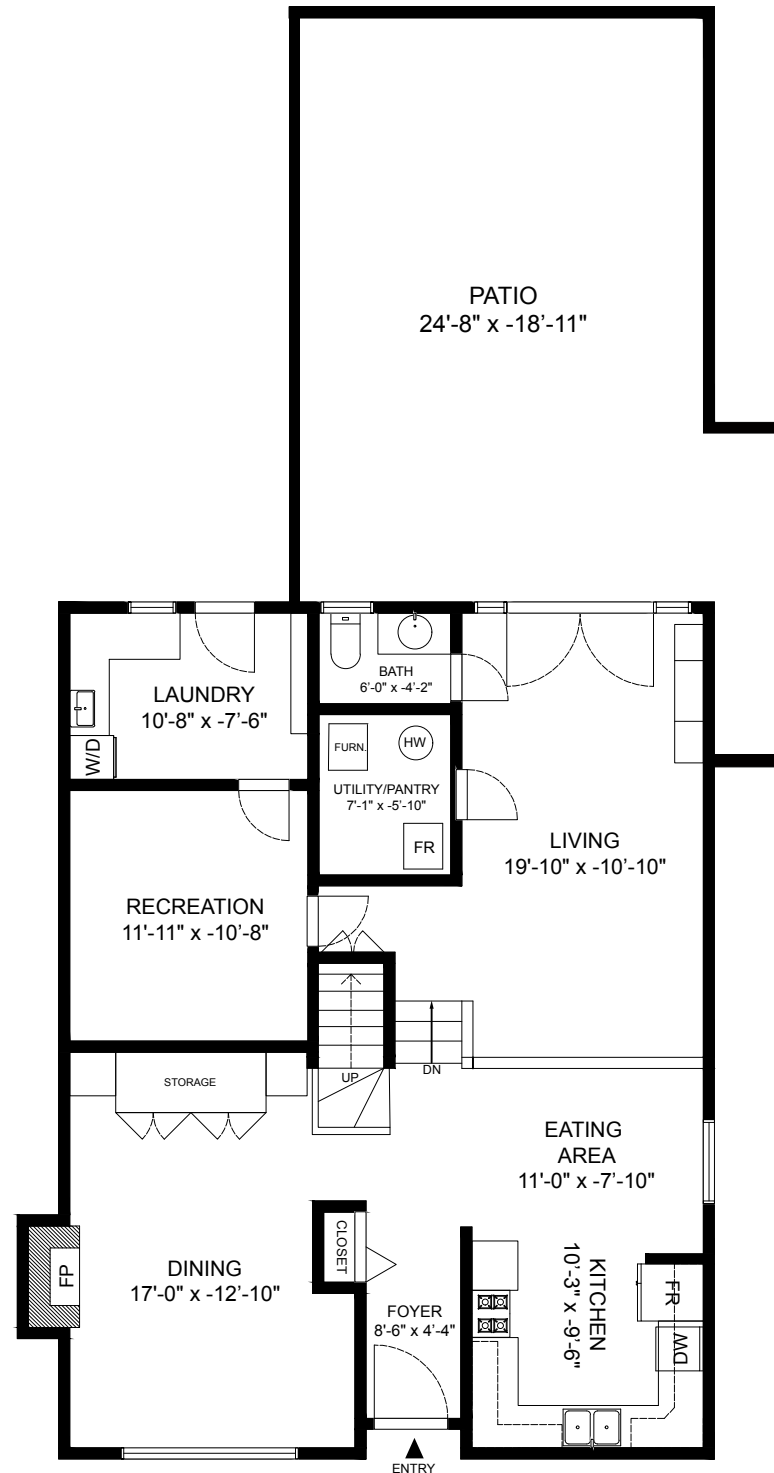
1291 Pipeline Rd

Coquitlam, BC

Main : 1130 SQ.FT.
 Upper: 640 SQ.FT.
 Total : **1770 SQ.FT.**
 Patio: 501 SQ.FT.
 Shed: 68 SQ.FT.
 Total Extras: **569 SQ.FT.**



UPPER LEVEL
640 SQ.FT
 Ceiling Height - 8'-0"



MAIN LEVEL
1130 SQ.FT
 Ceiling Height - 8'-0" - 8'-7"



Measurements are approximate and taken from interior walls. To be used for illustrative purposes only. Floorplan measured by Angus Macgillivray on Feb 22, 2021.