

RE/MAX LifeStyles Realty
Independently Owned and Operated

Anil Bharwani 604 476 1111
www.anil.realtor
info@anil.realtor
Personal Real Estate Corporation

With You Every Step of the Way



12381 227 Street,
Maple Ridge, B.C.

Main Floor: 1,039 sq.ft.
Lower Floor: 791 sq.ft.

Total: 1,830 sq.ft.

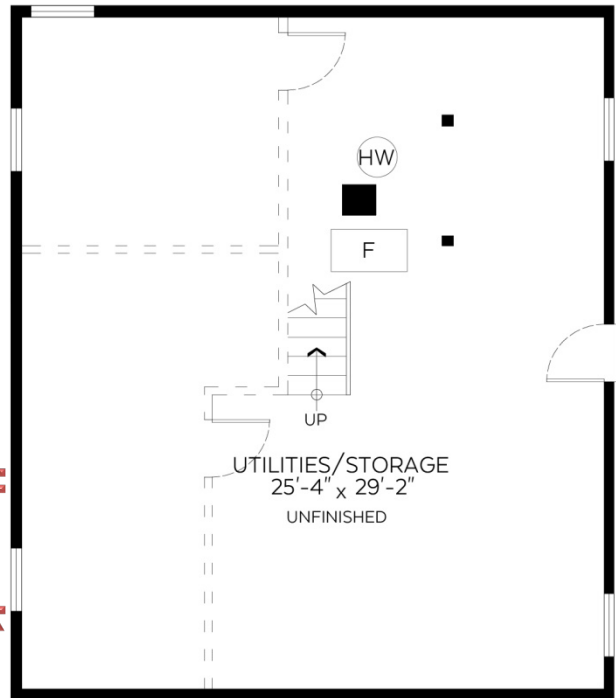
Auxiliary Area

Garage: 394 sq.ft.

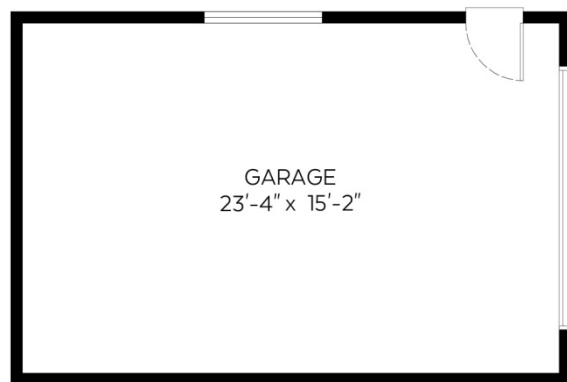


Main Floor Plan
Floor Area: 1,039 sq.ft.

www.anil.realtor



Lower Floor Plan
Floor Area: 791 sq.ft.



Valid Until: December 12, 2021

The floor plan is not suitable for architectural/construction and is covered under E&O. © Excelsior Measuring Inc. 2021. All rights reserved for Excelsior Measuring Inc. Users shall not publish and distribute such material (in whole or in part) and/or incorporate it in other works in any form.

