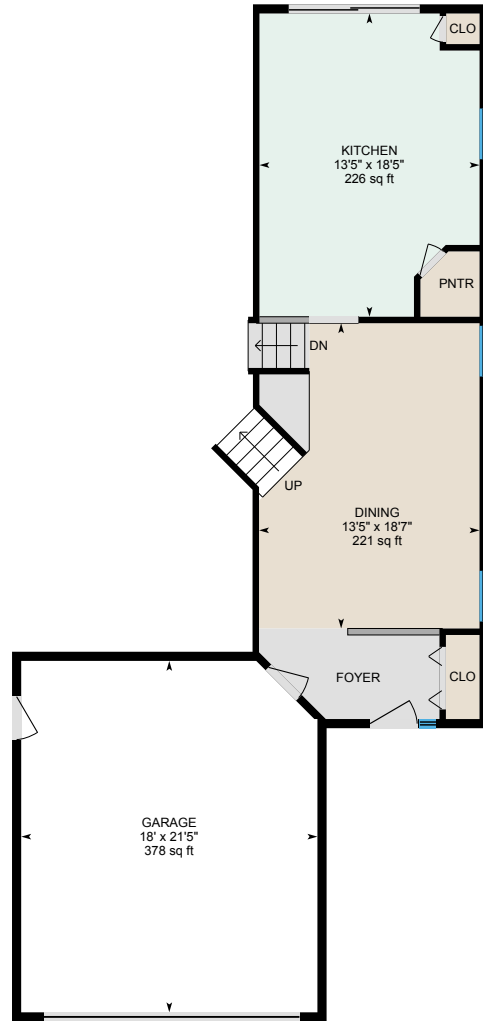
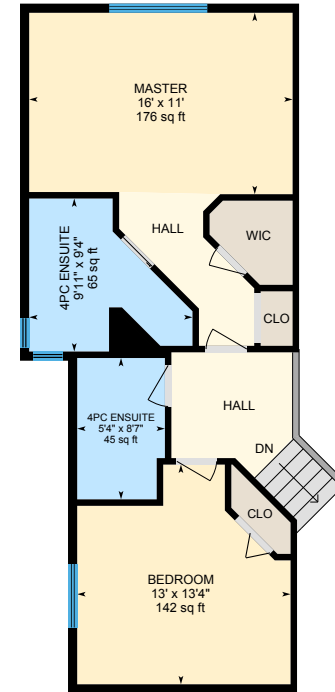


# 125 Coventry Mews NE, Calgary, AB

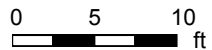
Main Building: Total Exterior Area Above Grade 1888 sq ft



**Main Floor**  
Exterior Area 611 sq ft

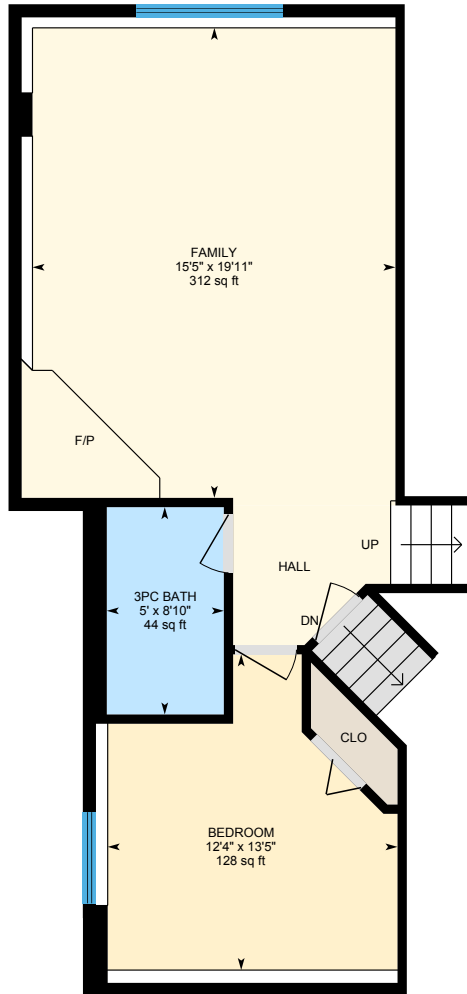


**2nd Floor**  
Exterior Area 655 sq ft

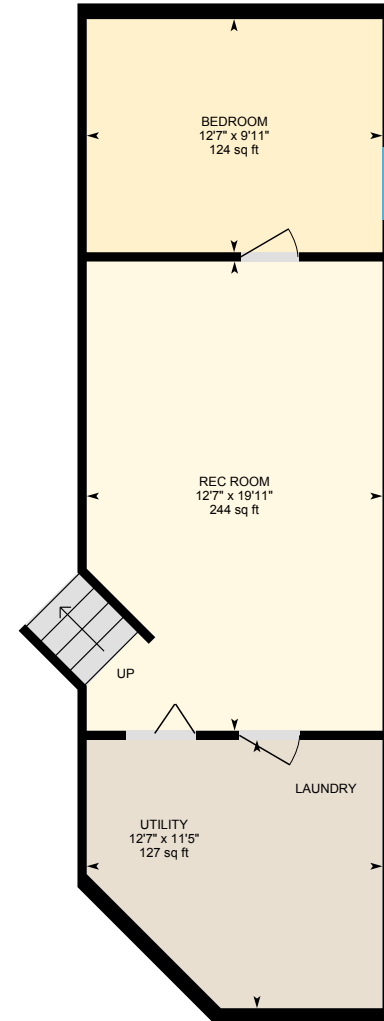


# 125 Coventry Mews NE, Calgary, AB

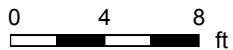
Main Building: Total Exterior Area Above Grade 1888 sq ft



**Lower Floor**  
Exterior Area 622 sq ft

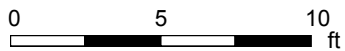
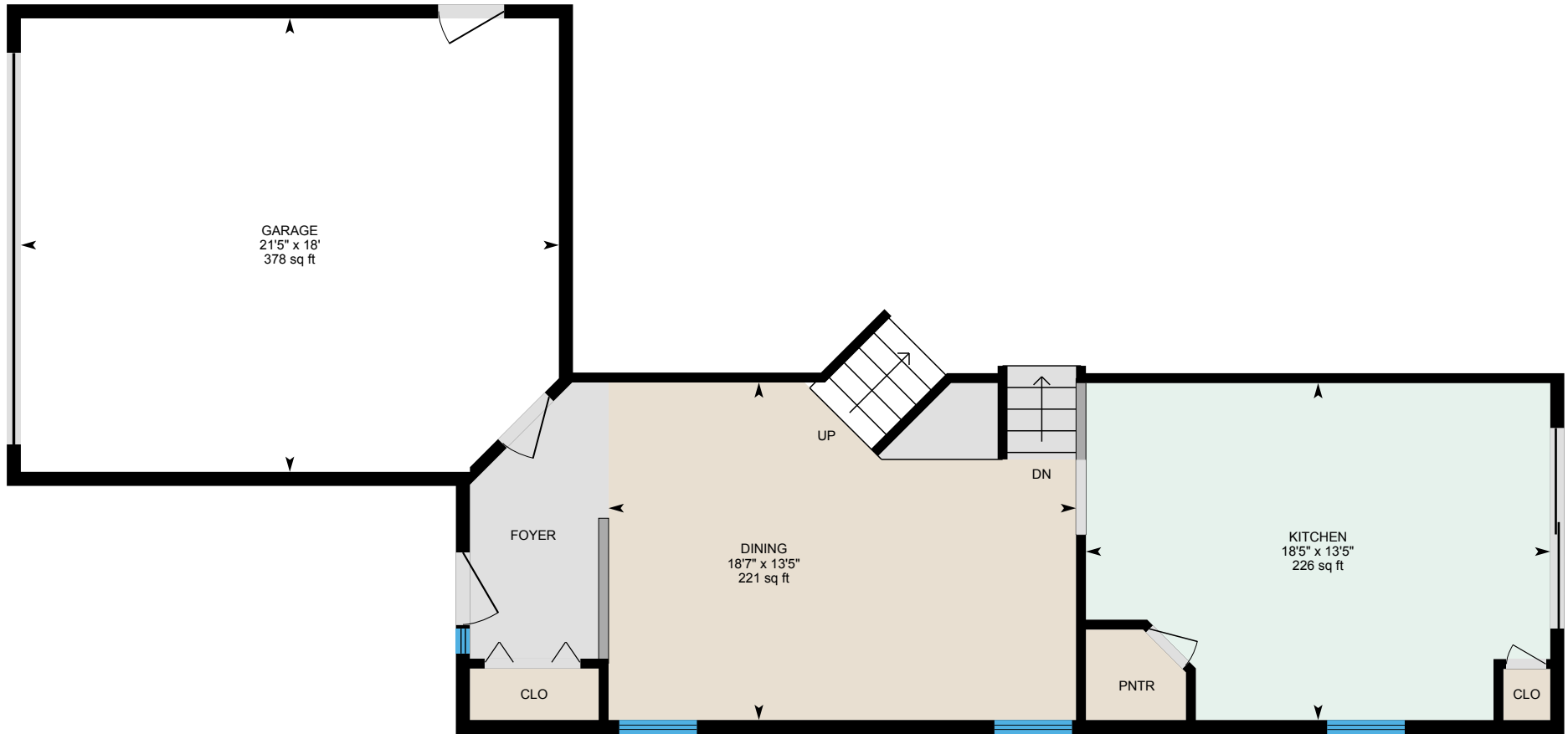


**Basement (Below Grade)**  
Exterior Area 591 sq ft



# 125 Coventry Mews NE, Calgary, AB

Main Floor Total Exterior Area 611 sq ft  
Total Interior Area 567 sq ft



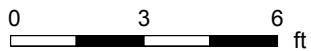
PREPARED: Jul, 2020



White regions are excluded from total floor area. All room dimensions and floor areas must be considered approximate and are subject to independent verification. For method of measurement please see <https://youriguide.com/measure/>.

# 125 Coventry Mews NE, Calgary, AB

2nd Floor Total Exterior Area 655 sq ft  
Total Interior Area 611 sq ft



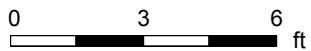
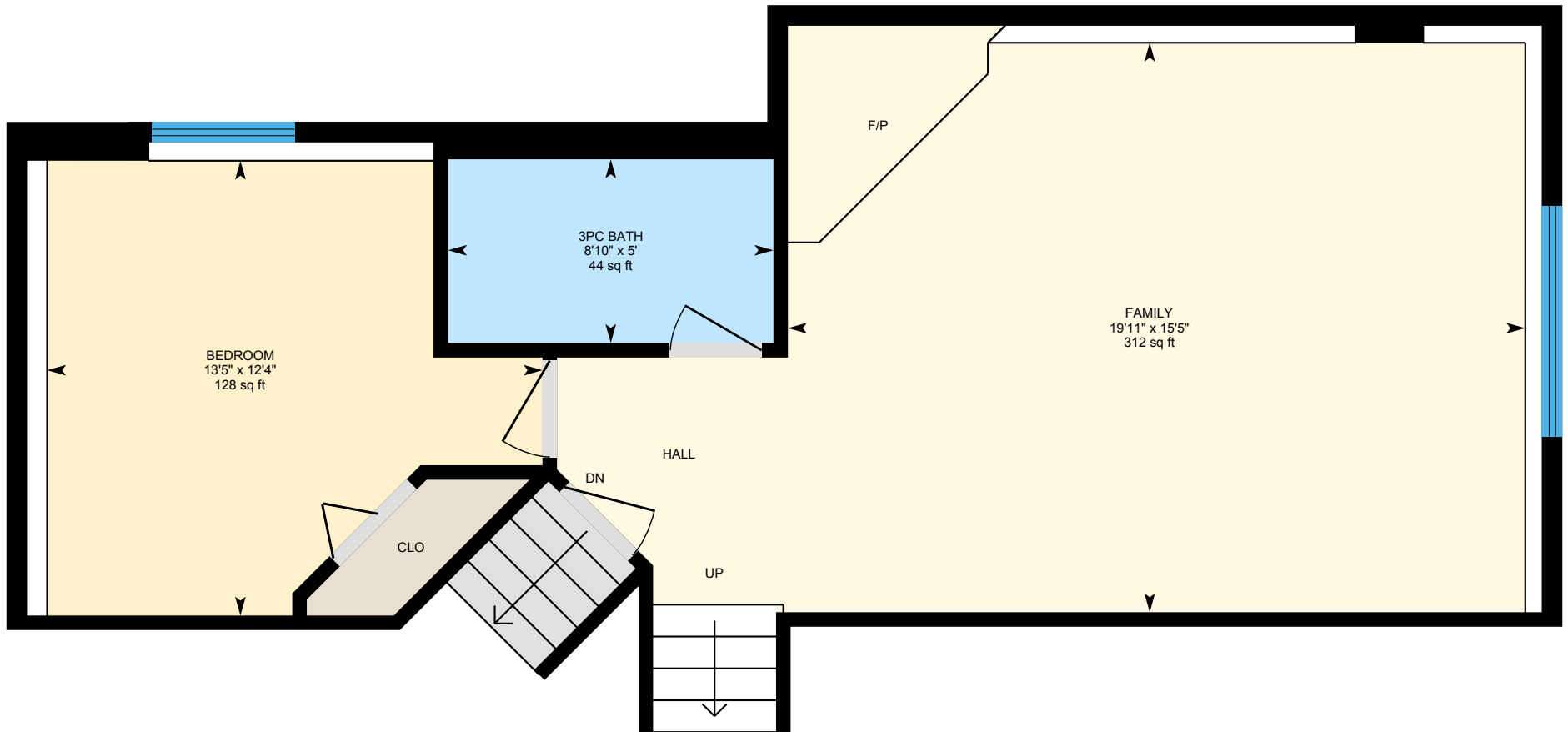
PREPARED: Jul, 2020



White regions are excluded from total floor area. All room dimensions and floor areas must be considered approximate and are subject to independent verification. For method of measurement please see <https://youriguide.com/measure/>.

# 125 Coventry Mews NE, Calgary, AB

Lower Floor Total Exterior Area 622 sq ft  
Total Interior Area 556 sq ft



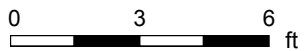
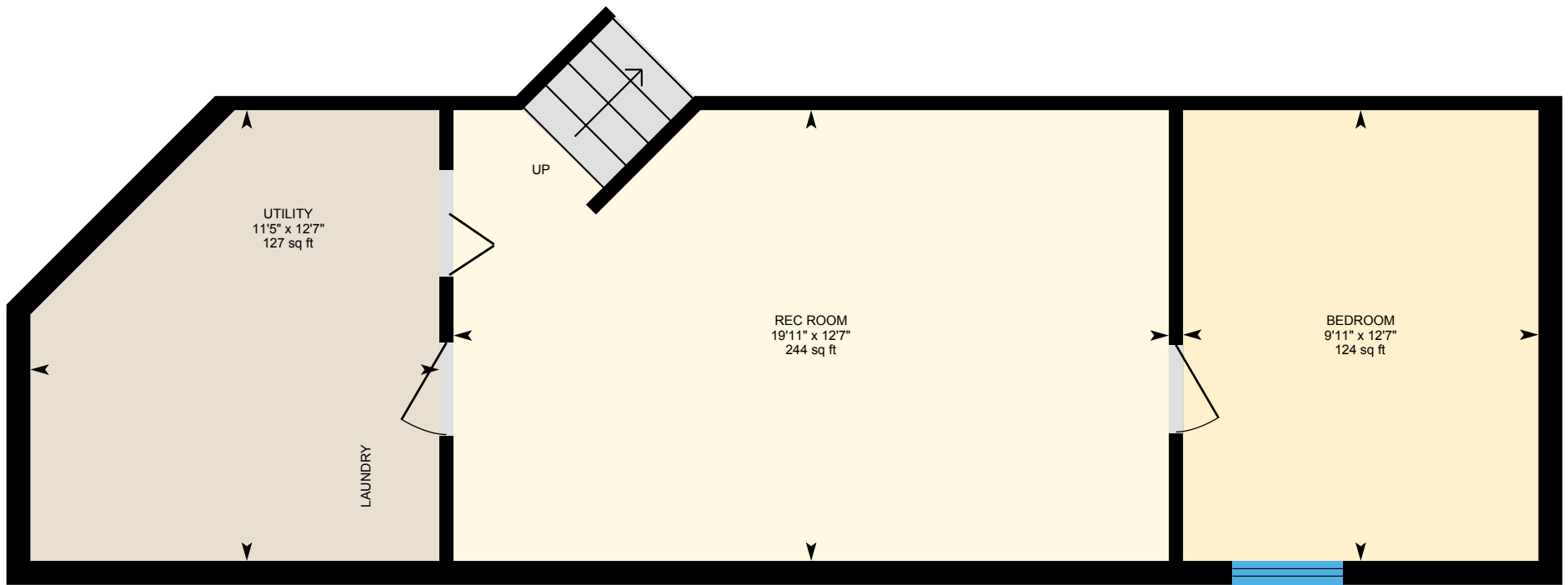
PREPARED: Jul, 2020



White regions are excluded from total floor area. All room dimensions and floor areas must be considered approximate and are subject to independent verification. For method of measurement please see <https://youriguide.com/measure/>.

# 125 Coventry Mews NE, Calgary, AB

**Basement** Total Exterior Area 591 sq ft  
Total Interior Area 518 sq ft



PREPARED: Jul, 2020



White regions are excluded from total floor area. All room dimensions and floor areas must be considered approximate and are subject to independent verification. For method of measurement please see <https://youriguide.com/measure/>.

# 125 Coventry Mews NE, Calgary, AB

## Property Details

### Room Measurements

Only major rooms are listed. Some listed rooms may be excluded from total interior floor area (e.g. garage). Room dimensions are largest length and width; parts of room may be smaller. Room area is not always equal to product of length and width.

#### Main Building

##### MAIN FLOOR

Dining: 13'5" x 18'7" | 221 sq ft  
Garage: 18' x 21'5" | 378 sq ft  
Kitchen: 13'5" x 18'5" | 226 sq ft

##### 2ND FLOOR

4pc Ensuite: 9'11" x 9'4" | 65 sq ft  
4pc Ensuite: 5'4" x 8'7" | 45 sq ft  
Bedroom: 13' x 13'4" | 142 sq ft  
Master: 16' x 11' | 176 sq ft

##### LOWER FLOOR

3pc Bath: 5' x 8'10" | 44 sq ft  
Bedroom: 12'4" x 13'5" | 128 sq ft  
Family: 15'5" x 19'11" | 312 sq ft

##### BASEMENT

Bedroom: 12'7" x 9'11" | 124 sq ft  
Rec Room: 12'7" x 19'11" | 244 sq ft  
Utility: 12'7" x 11'5" | 127 sq ft

### Floor Area Information

For explanation of floor area calculations and method of measurement please see <https://youriguide.com/measure/>. All displayed floor areas are rounded to nearest integer. Total area is computed before rounding and may not equal to sum of displayed floor areas.

#### Main Building

##### MAIN FLOOR

Interior Area: 567 sq ft  
Excluded Area: 378 sq ft  
Perimeter Wall Length: 79 ft  
Perimeter Wall Thickness: 6.7 in  
Exterior Area: 611 sq ft

##### 2ND FLOOR

Interior Area: 611 sq ft  
Perimeter Wall Length: 79 ft  
Perimeter Wall Thickness: 6.7 in  
Exterior Area: 655 sq ft

##### LOWER FLOOR

Interior Area: 556 sq ft  
Perimeter Wall Length: 120 ft  
Perimeter Wall Thickness: 6.7 in  
Exterior Area: 622 sq ft

##### BASEMENT (Below Grade)

Interior Area: 518 sq ft  
Perimeter Wall Length: 110 ft  
Perimeter Wall Thickness: 8.0 in  
Exterior Area: 591 sq ft

### Total Above Grade Floor Area

# 125 Coventry Mews NE, Calgary, AB

---

## Property Details

### Room Measurements

### Floor Area Information

Main Building Interior: 1734 sq ft

Main Building Excluded: 378 sq ft

**Main Building Exterior: 1888 sq ft**