

# 1540 FITZGERALD AVE.

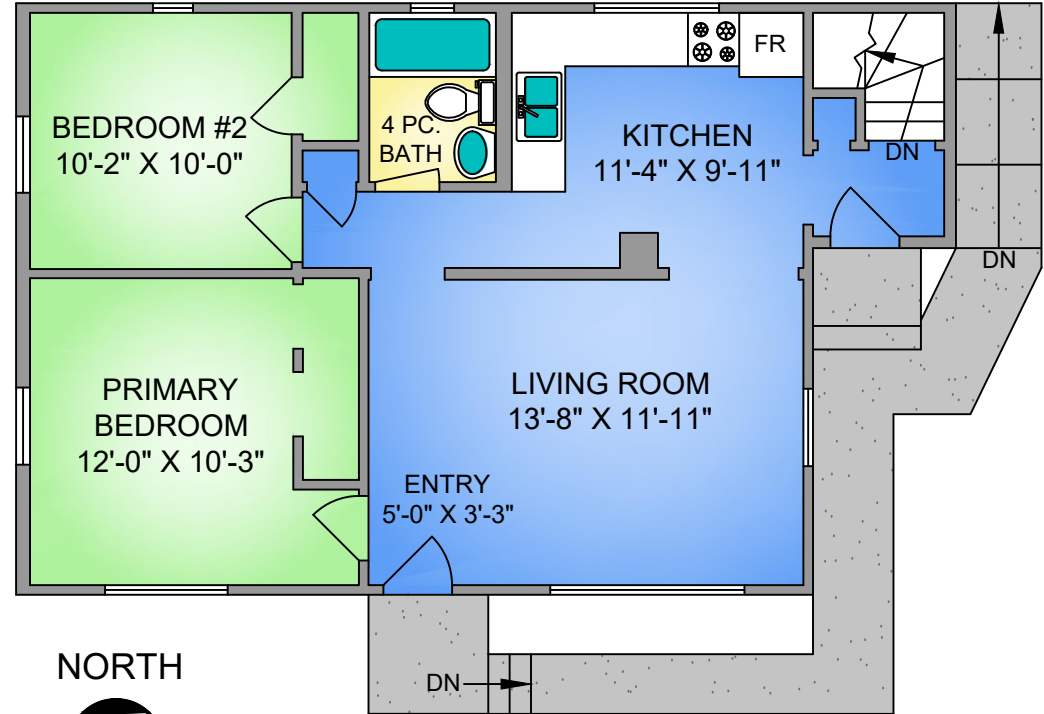
770 SQ. FT.

(+770 SQ.FT. UNFINISHED)

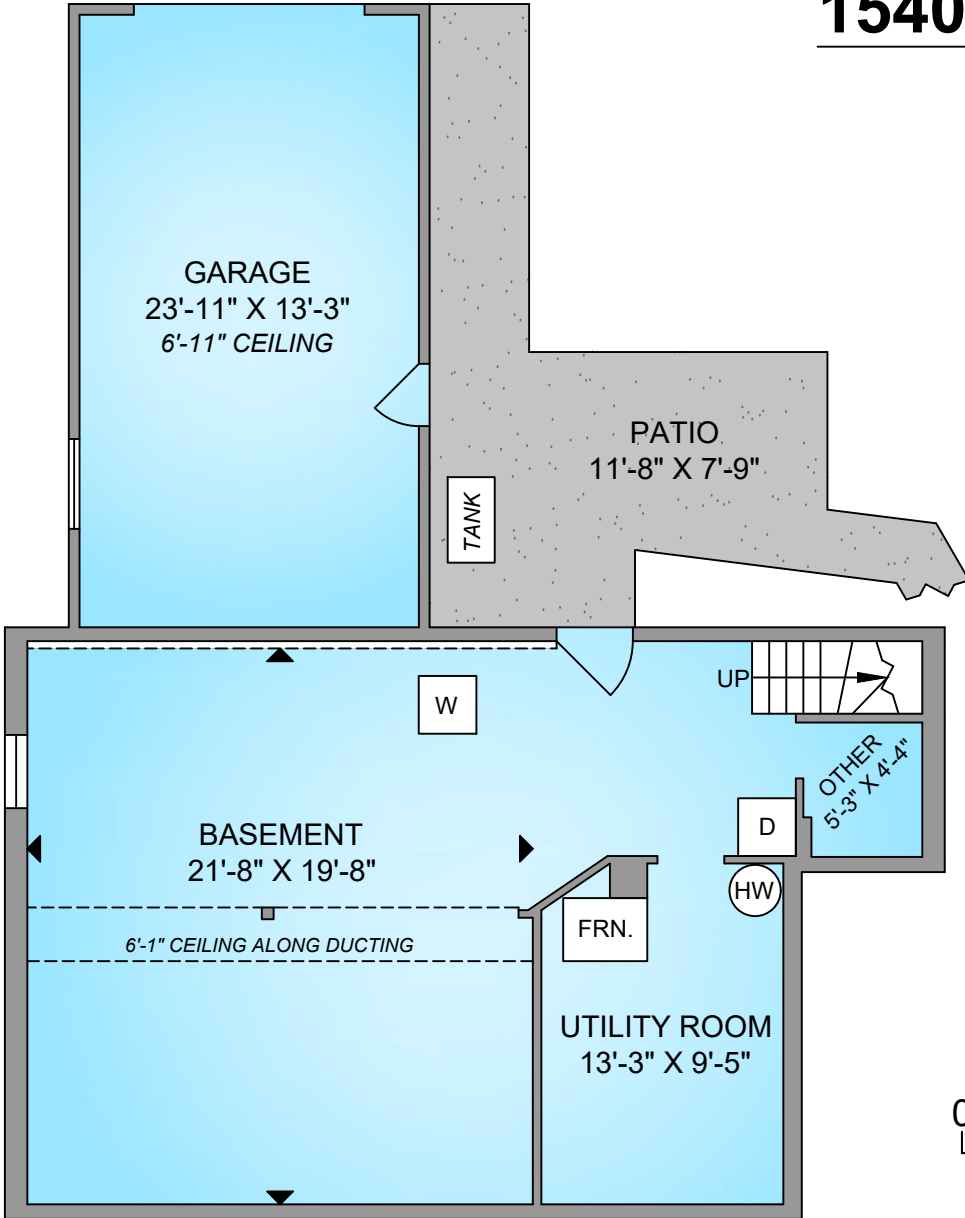
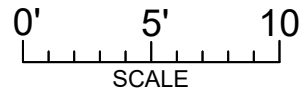
## MAIN FLOOR

770 SQ. FT.

7'-11" CEILING



NORTH



## LOWER FLOOR

770 SQ. FT.

(UNFINISHED)

6'-7" CEILING

1540 FITZGERALD AVE. APRIL 27, 2021				
Prepared by PROPER MEASURE NORTH ISLAND for the exclusive use of COURTNEY & ANGLIN REAL ESTATE Plans may not be 100% accurate. Buyer must verify any critical measurement. Private resale or modification of floor plans to a third party by any individual or entity other than Proper Measure North Island is strictly prohibited				
FLOOR	AREA (SQ. FT.)			
	FINISHED SQ.FT.	UNFINISHED SQ.FT.	GARAGE	PATIO
MAIN	770	-	-	-
LOWER	-	770	342	90
TOTAL	770	770	342	90



250-465-1487  
 Proper Measure North Island  
 NorthIsland@Propermeasure.com