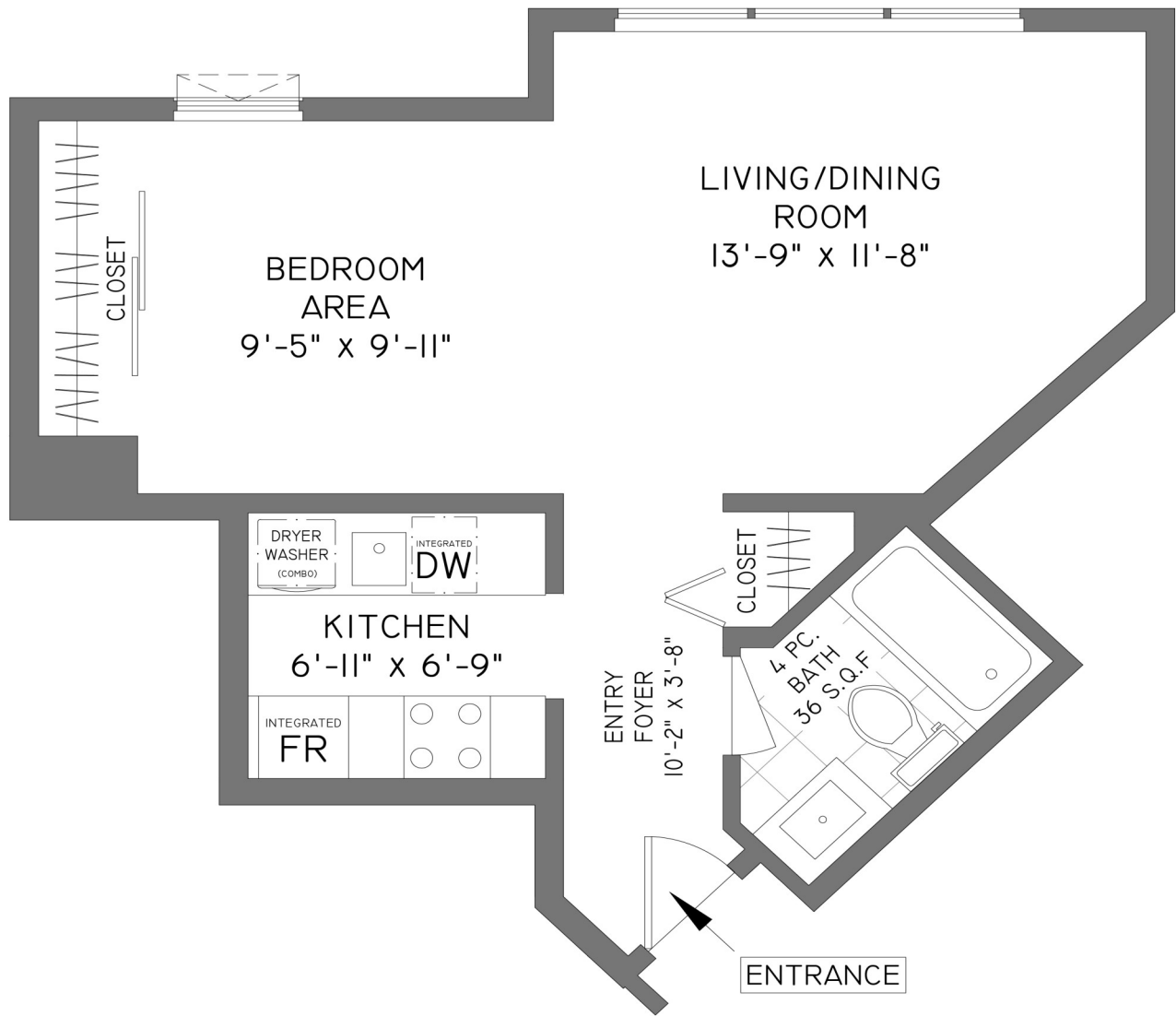


Pacific Point II



**#2603 - 1323 HOMER STREET
VANCOUVER
448 SQ. FT.**

7'-0" - 8'-0" CEILING HEIGHTS



FLOOR	AREA (SQ. FT.)
TWENTY SIXTH	448

THE REPRESENTED FLOOR PLANS ARE NOT SUITABLE FOR CONSTRUCTION ARCHITECTURAL PURPOSES. EVERY EFFORT HAS BEEN MADE TO REPRESENT ALL DIMENSION ACCURATELY. EQO INSURED. FINAL SQUARE FOOTAGE MAY BE OBTAINED FROM STRATA PLAN.



ANNE WEI | 604.838.0058 | Anne@AnneWei.com

BUY. SELL. INVEST.

Sutton WestCoast Realty™



#205 - 2607 E. 49th Ave Vancouver, BC V5S 1J9