

**DEXTER REALTY
PAIGE KRAFT**

PERSONAL REAL ESTATE CORPORATION
604 603 3475

RUTHIE SHUGARMAN

PERSONAL REAL ESTATE CORPORATION
604 879 2941

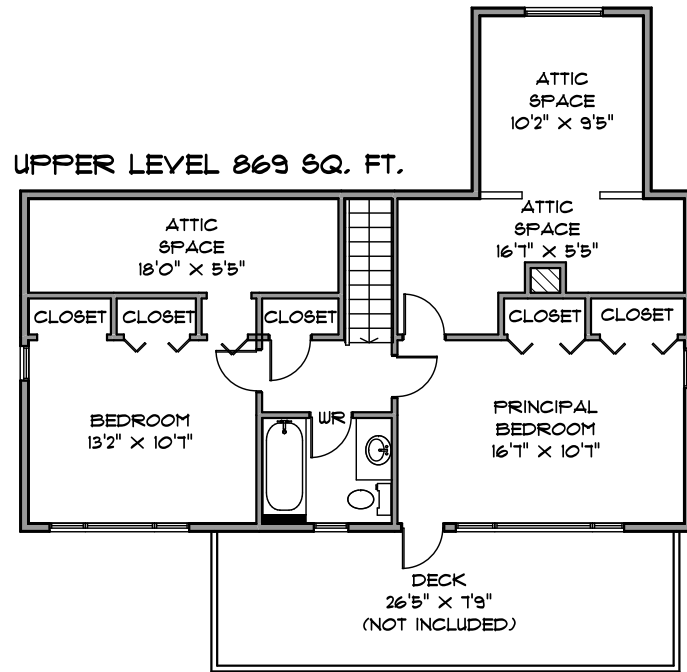


**327 WEST 26th STREET
NORTH VANCOUVER**

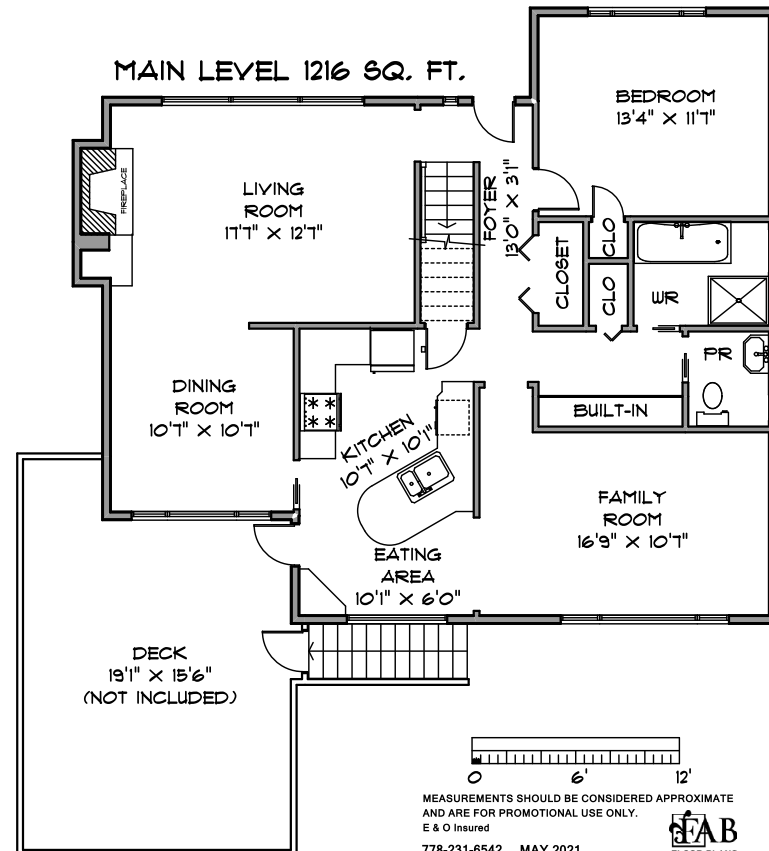
SQUARE FOOTAGE
MAIN LEVEL 1216
UPPER LEVEL 869
LOWER LEVEL 1182
TOTAL 3267

**DECKS 554
SHED 71**

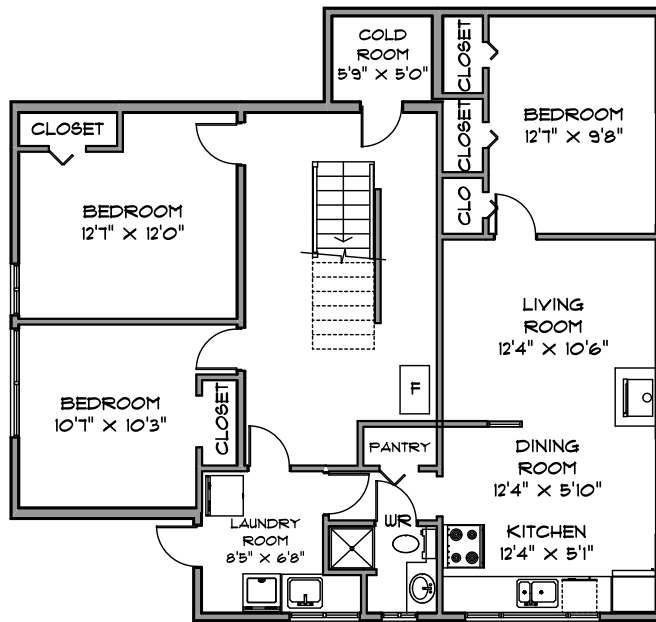
UPPER LEVEL 869 SQ. FT.



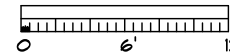
MAIN LEVEL 1216 SQ. FT.



LOWER LEVEL 1182 SQ. FT.



SHED
9'8" x 5'8"
(NOT INCLUDED)



MEASUREMENTS SHOULD BE CONSIDERED APPROXIMATE
AND ARE FOR PROMOTIONAL USE ONLY.
E & O Insured
778-231-6542 MAY 2021
E&B FLOOR PLANS