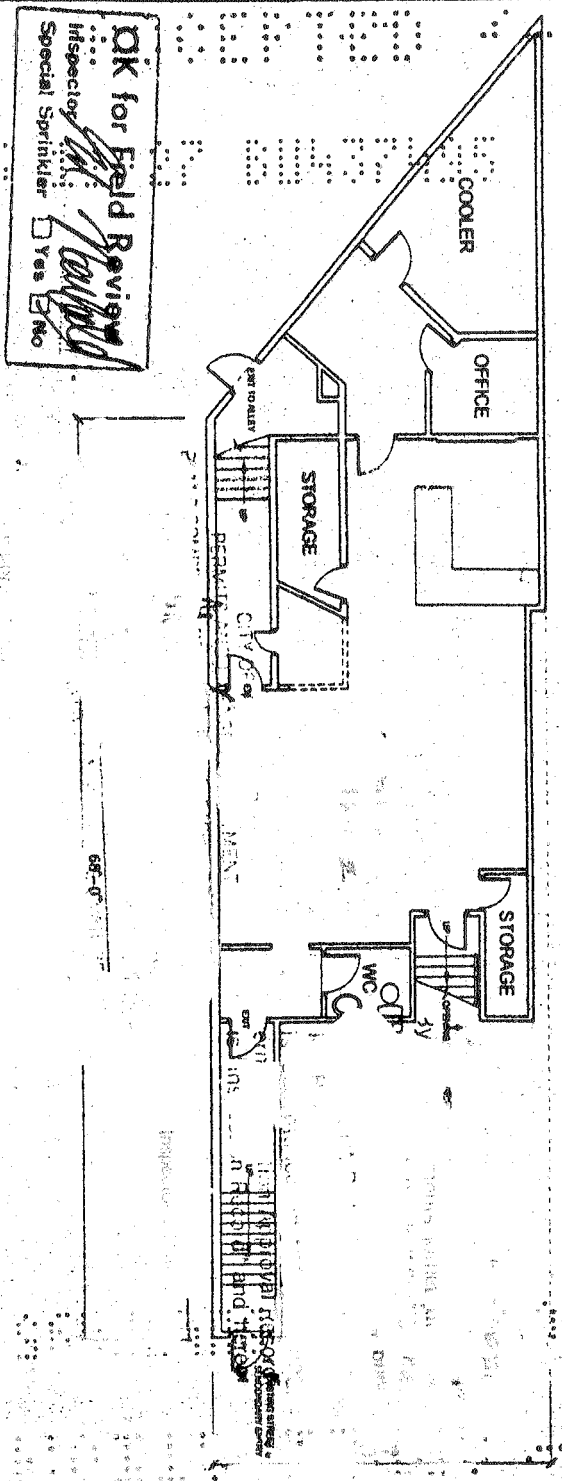


97'-0"

ADD SCOPY  
R0437495  
52 Powell

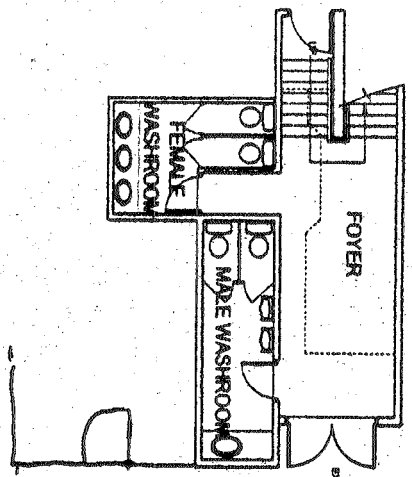


66'-0"

PROJECT		SHEET TITLE		DRAWING NO.	
52 POWELL STREET		BASEMENT FLOOR PLAN		1/6	
52 Powell Street, Vancouver, B.C.		SCALE		1/6	
		PILOT DATE		Sept. 12 /06	

1/6

52 POWELL STREET



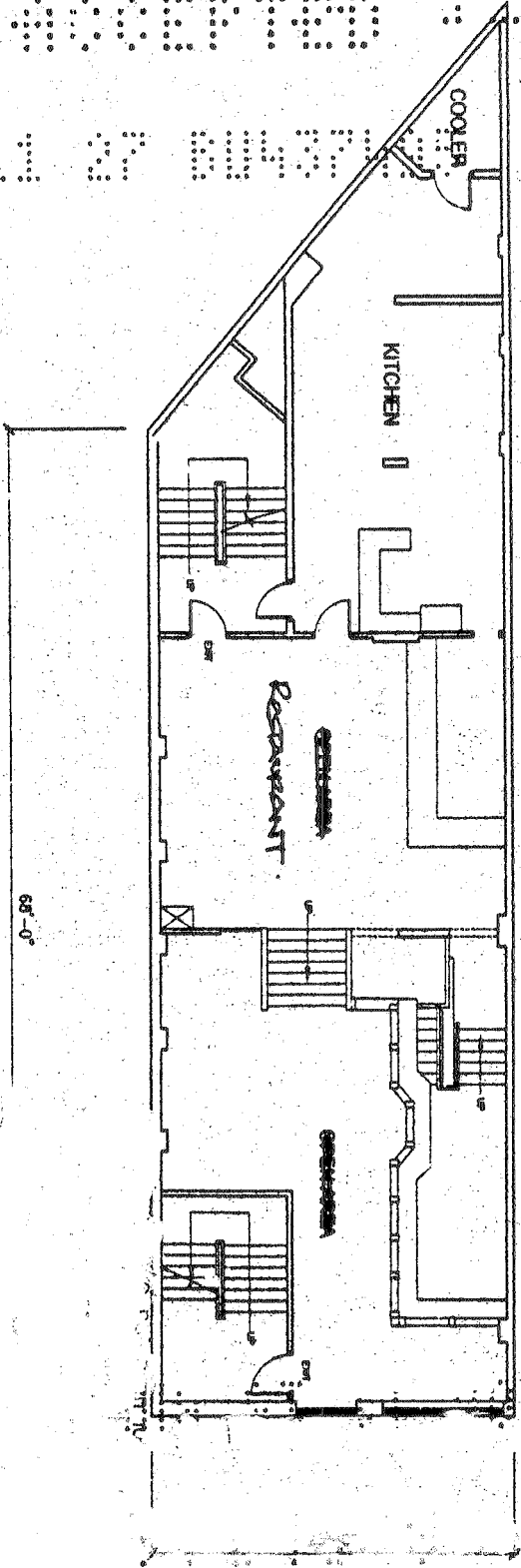
AREA: 456 sq. ft.

PROJECT		52 POWELL STREET	
		52 Powell Street, Vancouver, B.C.	
SHEET TITLE		DRAWING NO.	
ENTERANCE AND LANDING PLAN		216	
SCALE	3/32" = 1'-0"		
PLOT DATE	Sept 12/06		

216  
7/6

97'-0"

68'-0"



PROJECT

52 POWELL STREET

52 Powell Street, Vancouver, B.C.

SHEET TITLE

FIRST FLOOR PLAN

DRAWING NO.

SCALE

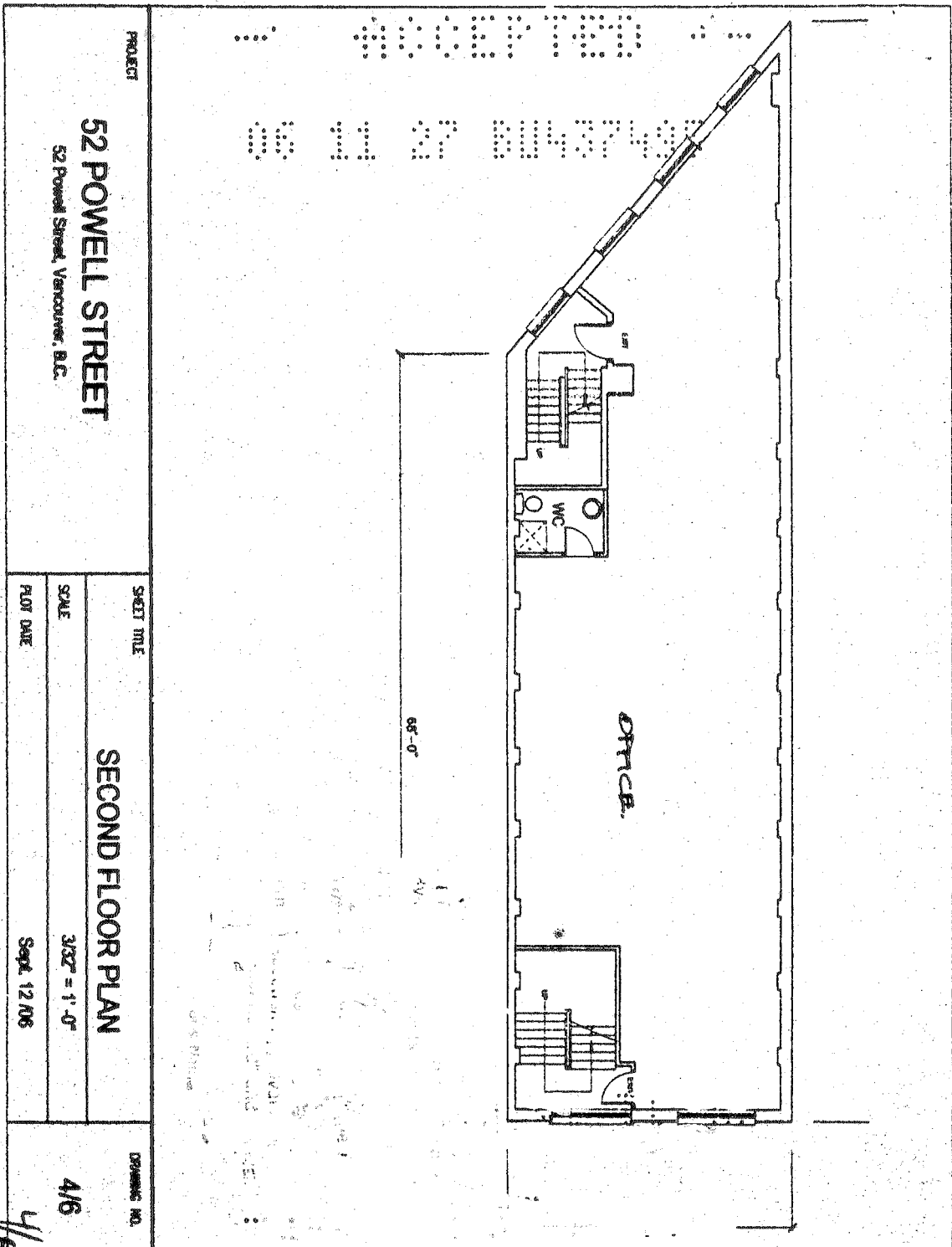
3/32" = 1'-0"

3/6

PLOT DATE

Sept. 12 /06

3/6



PROJECT  
**52 POWELL STREET**  
 52 Powell Street, Vancouver, B.C.

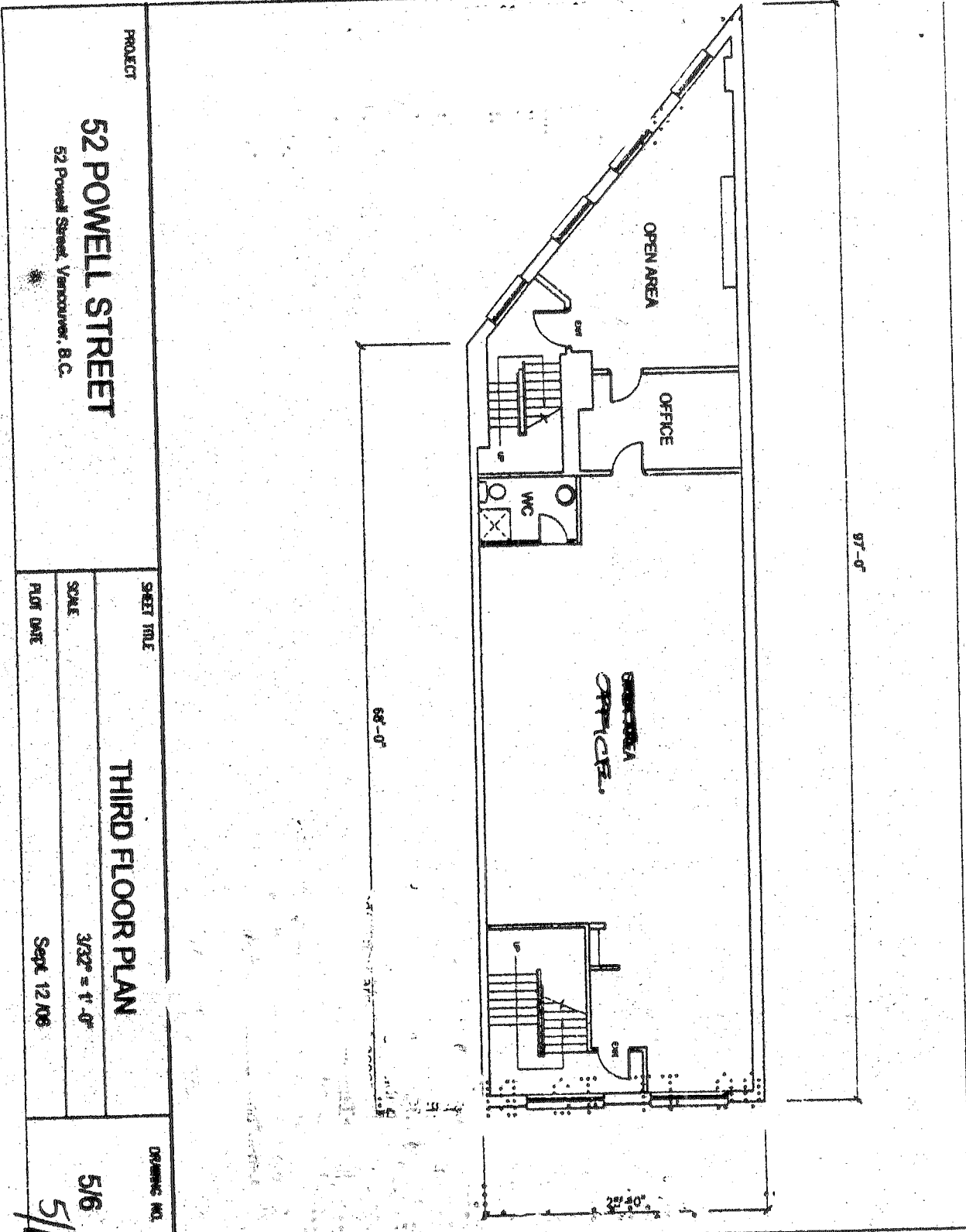
SKETCH TITLE  
**SECOND FLOOR PLAN**

SCALE  
 3/32" = 1'-0"

PLANT DATE  
 Sept. 12 /06

DRAWING NO.  
 4/6  
 4/6

161 4 12



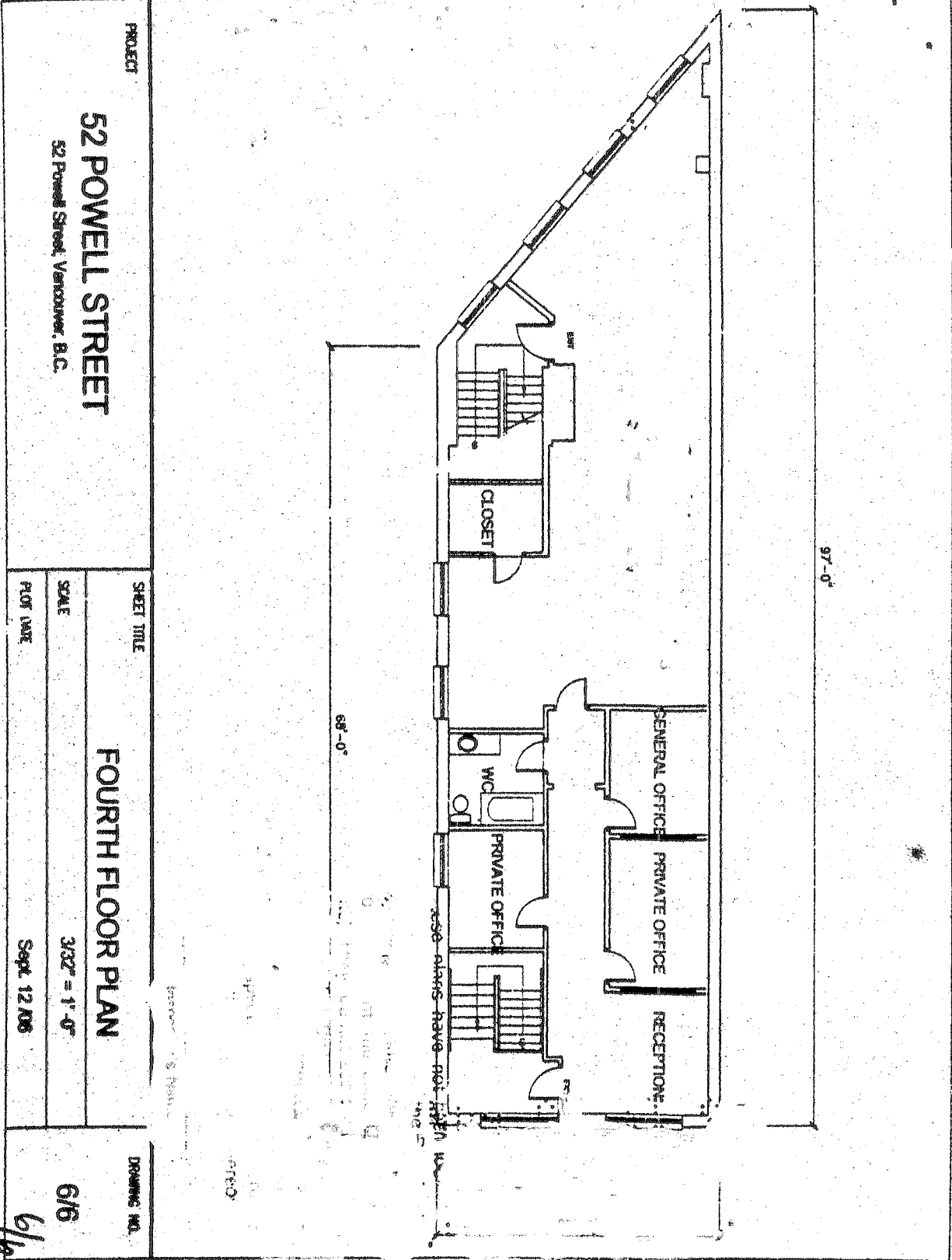
PROJECT  
**52 POWELL STREET**  
 52 Powell Street, Vancouver, B.C.

SHEET TITLE	<b>THIRD FLOOR PLAN</b>
SCALE	
PLAT DATE	

3/32" = 1'-0"  
 Sept 12 1966

DRAWING NO.  
**516**  
 S/b

DEC 14 2006



PROJECT  
**52 POWELL STREET**  
 52 Powell Street, Vancouver, B.C.

SHEET TITLE  
**FOURTH FLOOR PLAN**

SCALE  
 3/32" = 1'-0"

FLOOR DATE  
 Sept 12 1906

DRAWING NO.  
**6/6**  
*6/6*