

5035 224th Street,  
 Langley, B.C.

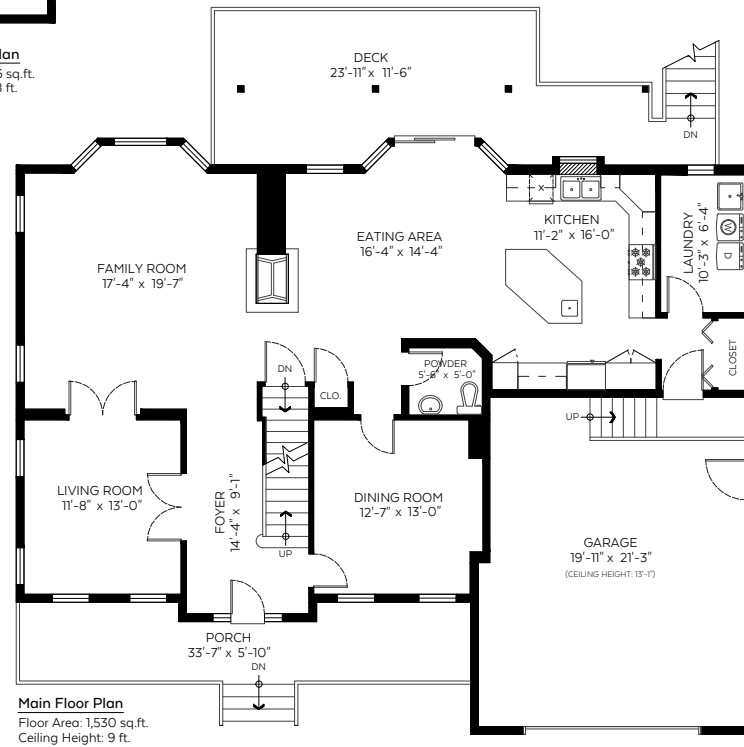
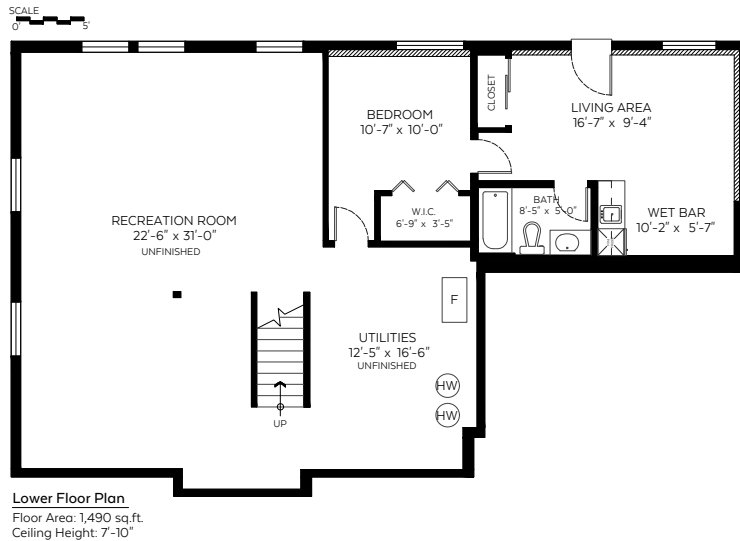
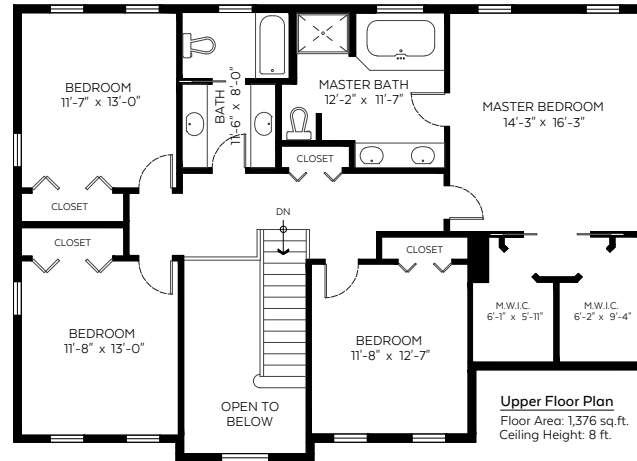
Main Floor: 1,530 sq.ft.  
 Upper Floor: 1,376 sq.ft.  
 Lower Floor: 1,490 sq.ft.

**Total: 4,396 sq.ft.**

Open to Below: 105 sq.ft.

**Auxiliary Area**

Garage: 509 sq.ft.  
 Porch: 182 sq.ft.  
 Deck: 323 sq.ft.



Measured on: Sep. 5, 2019



**NORTH**

