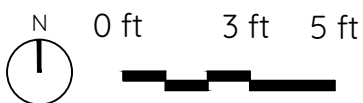
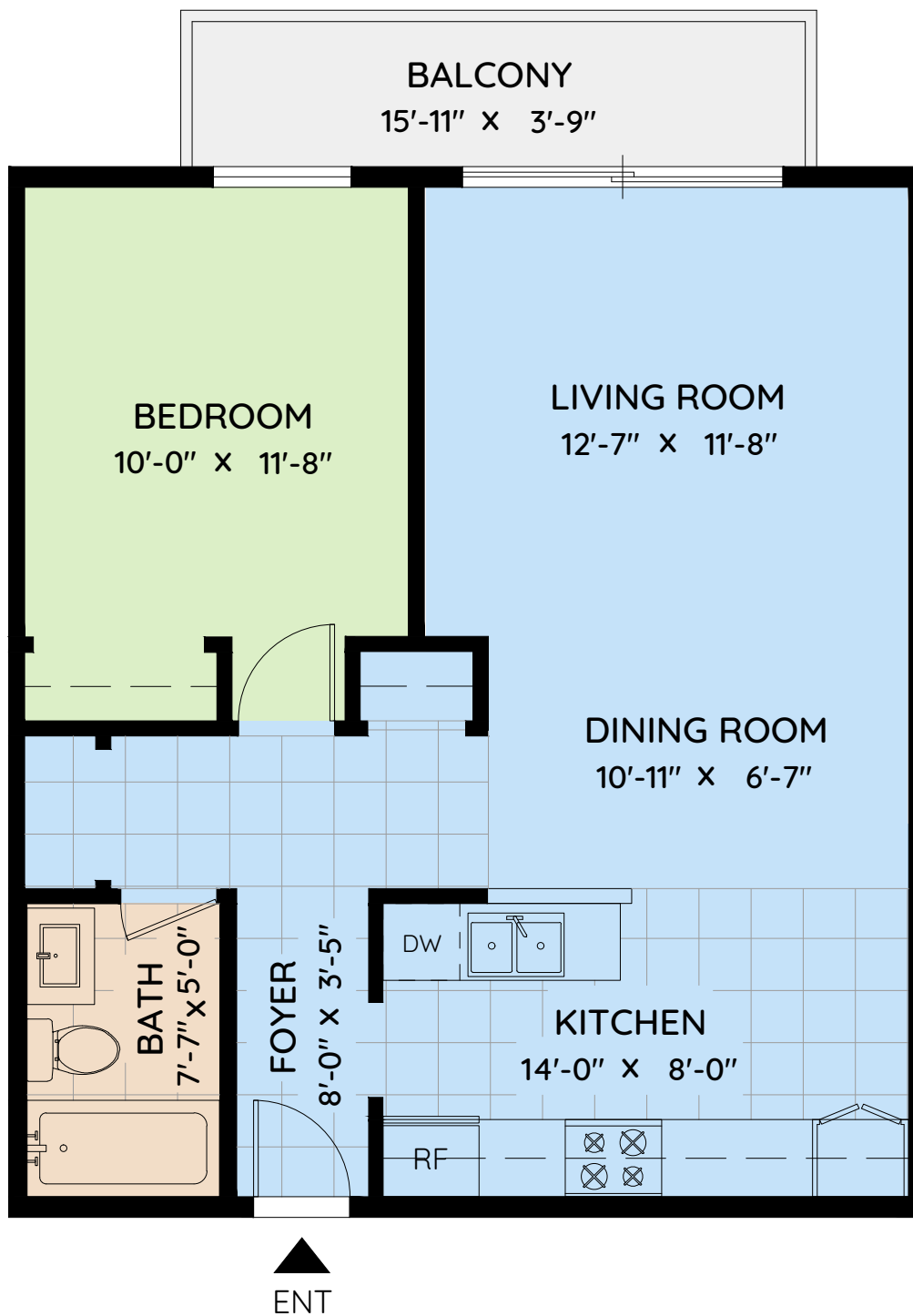


317 - 1000 KING ALBERT AVENUE

COQUITLAM, BC

LIVING AREA	650 SQ.FT.
BALCONY	67 SQ.FT.
CEILING HEIGHT	8'-0"



ELIO PARENTE
Personal Real Estate Corporation



The floor plan and the measurements are approximate and are to be used for advertising usage only. Not suitable for architectural or construction. E&O Insured