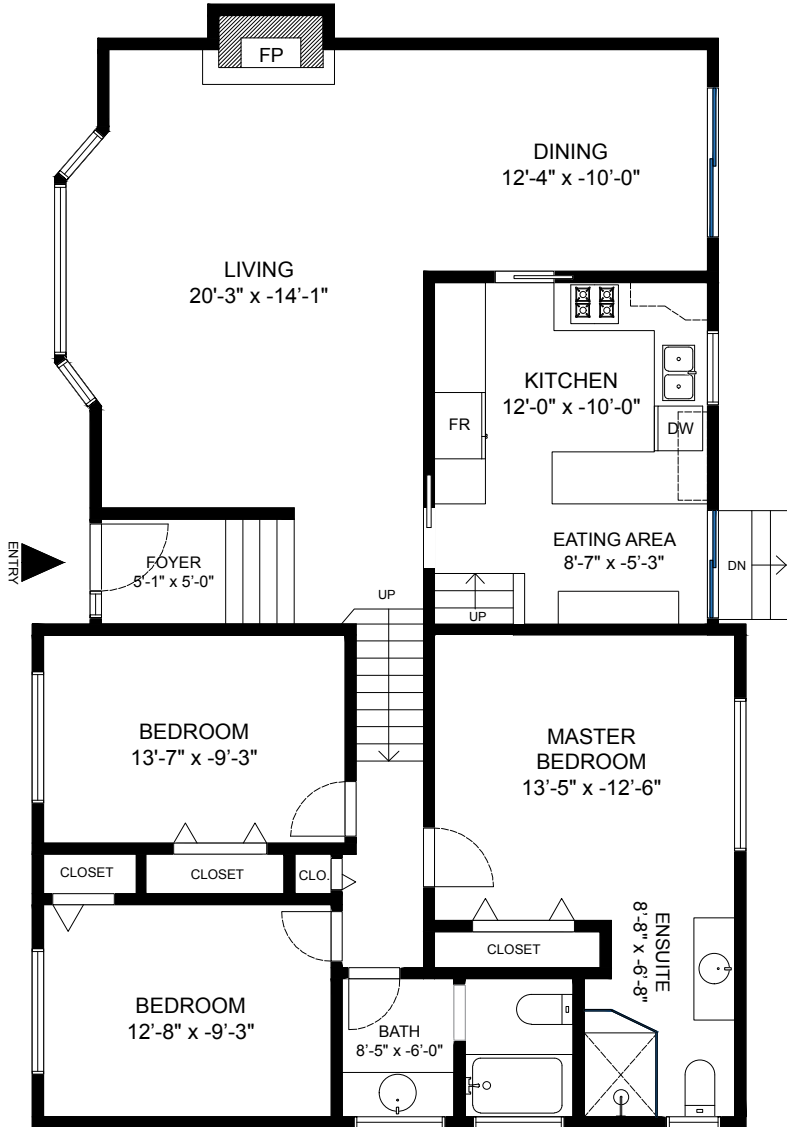


606 Waterloo Drive

Port Moody, BC

Upper: 1411 SQ.FT.
 Lower: 1085 SQ.FT.
Total: 2496 SQ.FT.

Pool: 549 SQ.FT.
 Shed: 65 SQ.FT.
 Crawl Space: 304 SQ.FT.
 Garage: 443 SQ.FT.
Total Extras: 1361 SQ.FT.



UPPER LEVEL
1411 SQ.FT
 Ceiling Height - 8'-0"



LOWER LEVEL
1085 SQ.FT
 Ceiling Height - 6'-2" - 8'-0"

TOTAL - 2496 SQ.FT

