



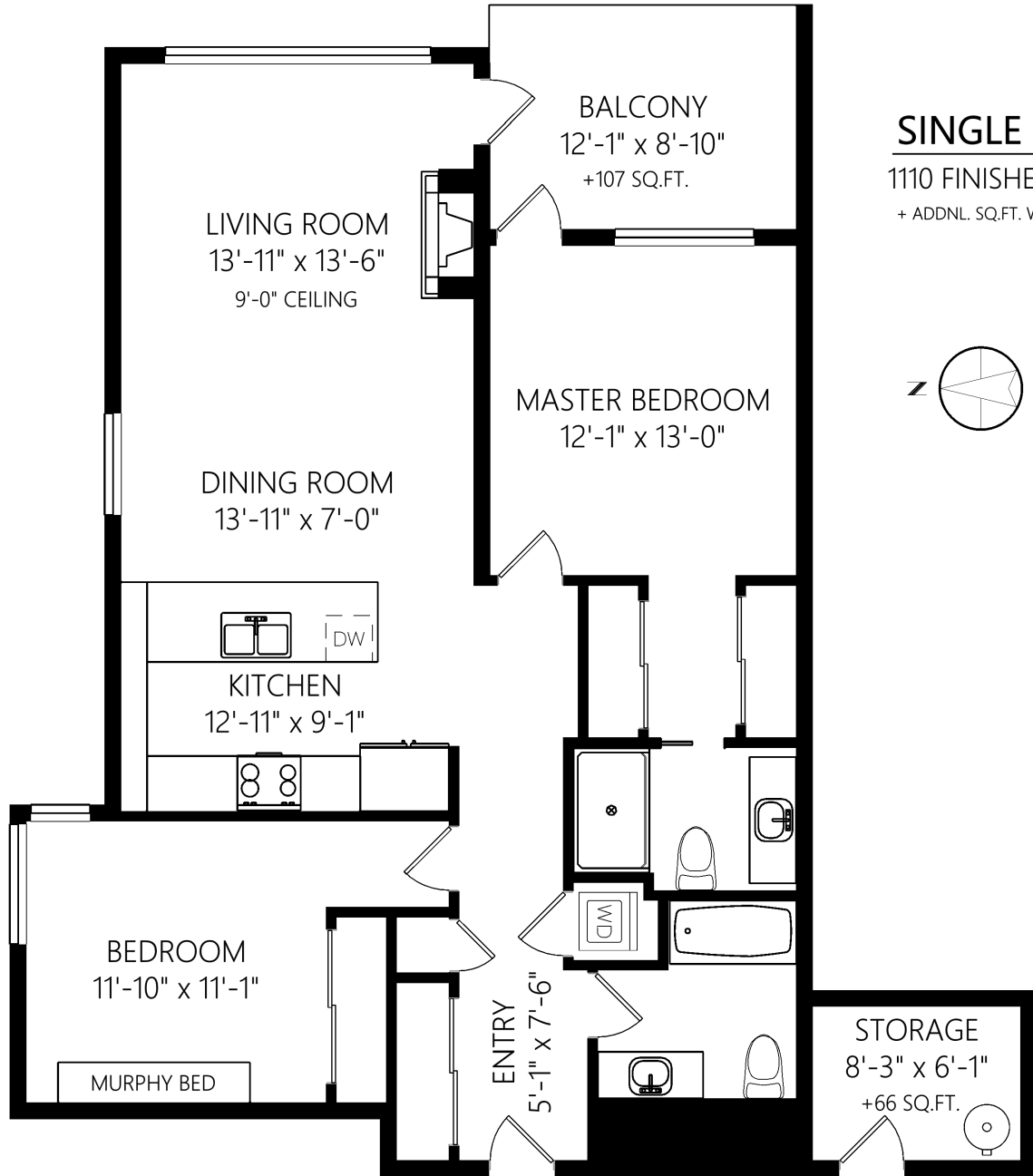
Ann Watley, Personal Real Estate Corporation

ann@annwatley.com <http://www.annwatley.com>
 Office: (250) 656-3486 Direct: (250) 656-3486



Pemberton Holmes Real Estate Ltd
 107-2360 Beacon Avenue
 Sidney, BC V8L 1X3

405-9818 Third St



SINGLE LEVEL

1110 FINISHED SQ.FT.

+ ADDNL. SQ.FT. WHERE NOTED

	Fin. Sq.Ft.	UnFin. Sq.Ft.	Total Sq.Ft.
Single Level	1110	0	1110
Total	1110	0	1110

Shown length and width dimensions are approximate.
 Area sq.ft. is representative of the on-site measurements. (1" accuracy)



Figures, Calculations, and Representations are for indicative and promotional purpose only.
 VI Standard Real Estate Services Inc. will not be liable for any damages of any kind arising from the mis-use of this information.