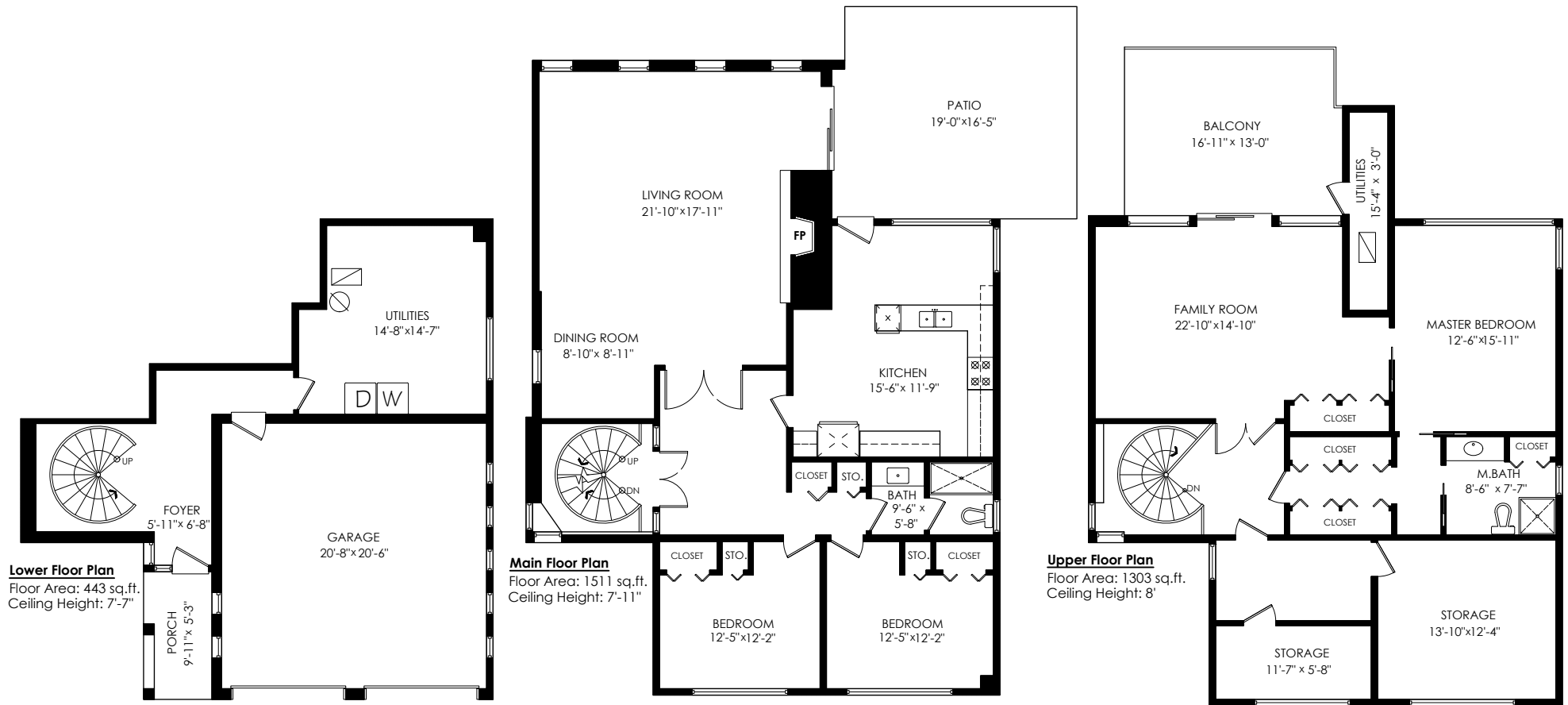


Main Floor:	1,511 sq.ft.
Upper Floor:	1,303 sq.ft.
Lower Floor:	443 sq.ft.
Total:	3,257 sq.ft.

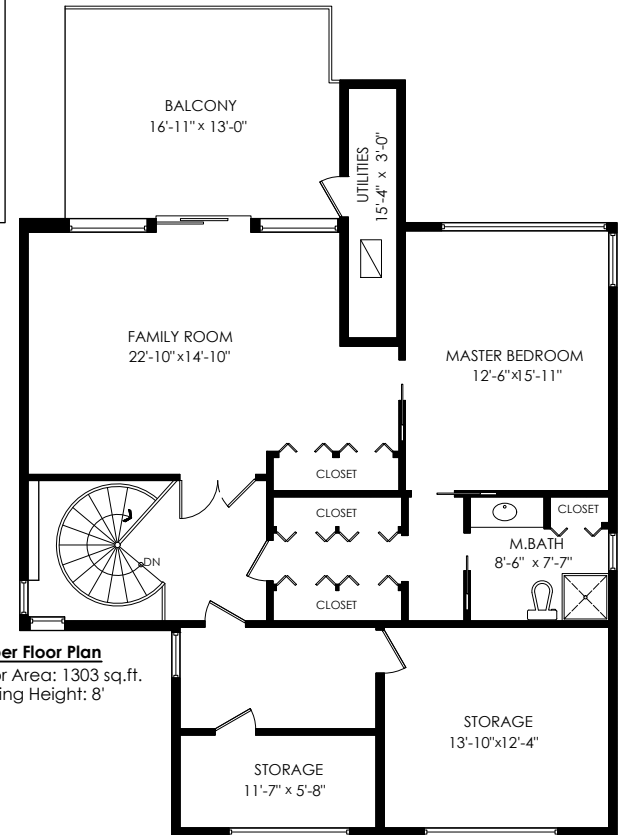
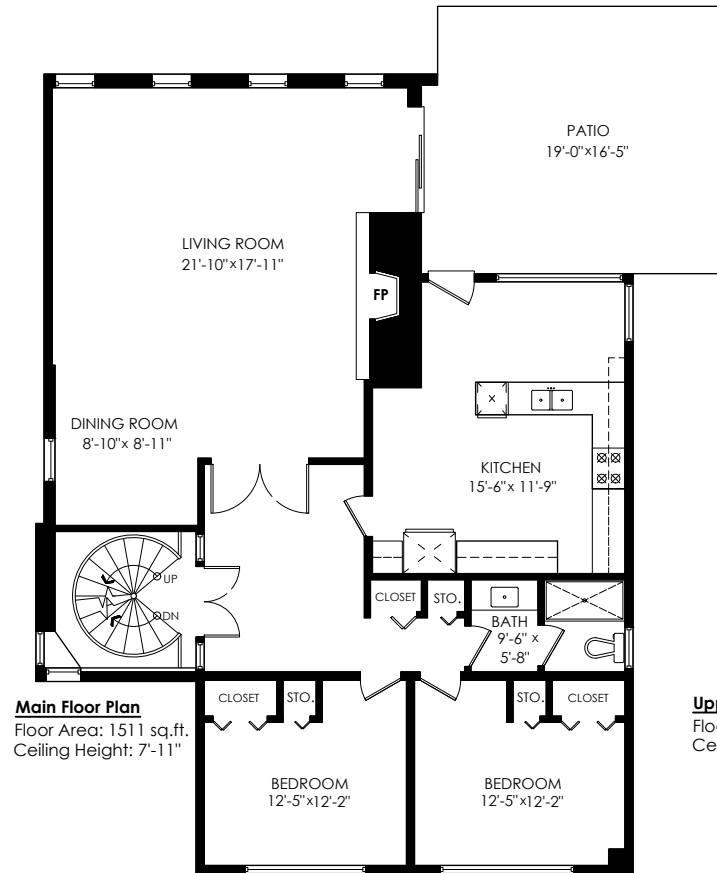
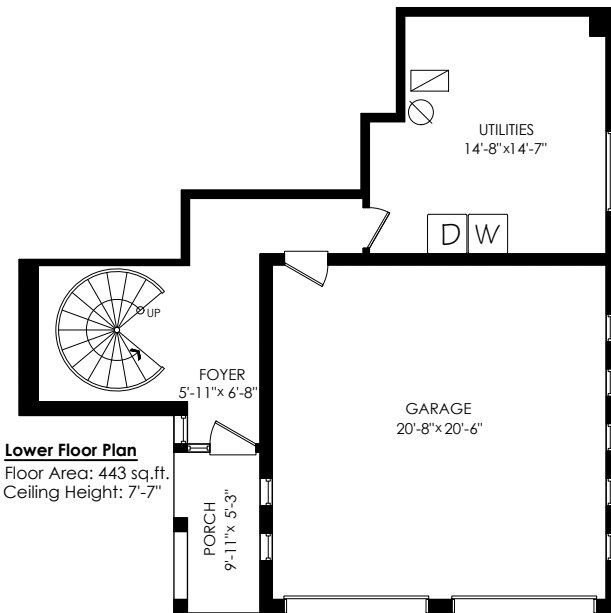
Garage:	456 sq.ft.
Patio:	306 sq.ft.
Balcony:	218 sq.ft.
Porch:	52 sq.ft.
Total Extras:	1,032 sq.ft.



2614 O'hara Ln, Surrey

Main Floor:	1,511 sq.ft.
Upper Floor:	1,303 sq.ft.
Lower Floor:	443 sq.ft.
Total:	3,257 sq.ft.

Garage:	456 sq.ft.
Patio:	306 sq.ft.
Balcony:	218 sq.ft.
Porch:	52 sq.ft.
Total Extras:	1,032 sq.ft.



Measurements, Design & Scanning | 604-329-5788

