

# MHS Pioneers, Welcome Back for the 2020-21 School Year!

This document highlights important information for students and families.

Our priority for the start of the 2020-21 school year is returning our students to high-quality learning in a safe environment.

Detailed Plans and Resources for Returning are available at:

<https://www.moorilleschools.org/students/2020-2021-return-to-school-information>

# Covid-19 Information

# MHS is Committed to Limiting the Spread of Covid-19

- **DAILY SELF-HEALTH CHECKS:** Students and staff are expected to conduct daily self-health checks. Anyone displaying symptoms or awaiting test results should stay home and contact school to explain absence.
- **WEAR MASKS:** Students and staff will be required to wear masks when social distancing is not possible and individuals are not eating. Due to the size of classrooms and number of students, mask wearing will be required for the majority of the day for our students.
- **WASH HANDS:** We will be encouraging students to wash/sanitize hands regularly but especially before and after eating. Every classroom will be supplied ample amounts of hand-sanitizer and cleaning supplies.
- **WATCH DISTANCE:** When we return, you will notice signs and floor markers reminding and encouraging social distancing. Extra furniture will be removed from classrooms.

## Symptoms of COVID-19



CONGESTION  
OR RUNNY NOSE



FEVER 100.4\*  
\*or school board policy  
if threshold is lower



COUGH



SHORTNESS OF BREATH OR  
DIFFICULTY BREATHING



DIARRHEA



NAUSEA



SORE THROAT



MUSCLE PAIN  
AND FATIGUE



CHILLS



NEW LOSS OF TASTE  
OR SMELL

*\*Usually presents with more than one symptom.*

## Required Daily Health Checks

- Have you exhibited any of the symptoms listed above in the last 24 hours?
- Have you had close contact or cared for anyone who has tested positive for COVID-19 in last 14 days?
- Have you been tested for COVID-19 and are awaiting results?
- If yes, stay home and contact MHS (317-831-9203).

Students and Staff will wear **Face Coverings** when Social Distancing is not possible.

(Cover mouth & nose)

- We will follow Gov. Holcomb's executive order regarding Face Coverings: <https://www.in.gov/gov/files/Executive%20Order%2020-37%20Face%20Covering%20Requirement.pdf>.
- Face Coverings will be required in hallways and most classrooms. I strongly encourage to start wearing a mask now to get used to wearing one. It is very uncomfortable at first but you will be able to adjust over time.
- CDC and state guidance recommend a cloth face covering. The shape, style, and fabric typed are up to the student/family. All coverings should comply with existing school guidelines for printing on mask.
- Two very informative resources and DOE guidance about masks:
  - From Brigham Health: <https://www.brighamandwomens.org/about-bwh/newsroom/press-releases-detail?id=3608>
  - Study in JAMA: <https://jamanetwork.com/journals/jama/fullarticle/2768533>
  - Guidance from DOE: [https://www.doe.in.gov/sites/default/files/news/face-coverings-family-guidance-updated.pdf?utm\\_content=&utm\\_medium=email&utm\\_name=&utm\\_source=govdelivery&utm\\_term=](https://www.doe.in.gov/sites/default/files/news/face-coverings-family-guidance-updated.pdf?utm_content=&utm_medium=email&utm_name=&utm_source=govdelivery&utm_term=)



# Contact Tracing

- Being a “close contact” means being within 6 feet of another person for more than 15 minutes.
- We will assist the Morgan County Health Department with contact tracing on campus.
- We will make efforts to minimize the number of close contacts by:
  - Utilizing seating charts on buses and in all classrooms and lunch room
  - Work with the same groups members throughout the semester
  - And more.

## COVID-19: When a student, faculty or staff member can return to school



Individual	Symptomatic	No Symptoms
Not Tested <b>with</b> Alternate Explanation (strep, influenza, etc. as determined by a provider)	May return to school after 24 hours resolution of fever <b>AND</b> note (including email and fax) from provider stating the individual has an alternate diagnosis and the provider believes it's appropriate for the patient to return to school.	N/A
Not Tested <b>Without</b> Alternate Explanation	Must remain home for at least 10 days from the first day symptoms appeared <b>AND</b> 72 hours fever-free without fever-reducing medicine and with improvement of respiratory symptoms.	N/A
Tested and Negative	If no alternative explanation, <i>isolate</i> for at least 10 days from the first day symptoms appeared <b>AND</b> 72 hours fever-free without fever-reducing medications and with improvement of respiratory symptoms. The test may have been a false negative. The individual can return to school if tested negative <b>AND</b> with a note from the provider stating they believe the patient to have an alternate diagnosis and it's appropriate for the patient to return to school..	May proceed with attending school. EXCEPTION: A known close contact (within 6 feet of a confirmed case for more than 15 minutes) must complete a 14-day <i>quarantine</i> , even if test results are negative for COVID-19.
Tested and Positive	Must remain home in <i>isolation</i> for at least 10 days from the date symptoms began <b>AND</b> 72 hours fever-free without fever-reducing medications and improvement of respiratory symptoms	<i>Isolate</i> at home for 10 days from the day the test was taken. <i>*If the individual develops symptoms, then isolation time starts on day 1 of symptoms (see symptomatic tests positive.)</i>
Close Contact (within 6 feet for more than 15 minutes of someone with confirmed COVID-19)	N/A If an individual becomes symptomatic, refer to the symptomatic scenarios. The individual must <i>quarantine</i> for 14 days after contact with the COVID-19 Positive person even if the student has an alternate diagnosis for symptoms.	<i>Quarantine</i> for 14 days before returning to school. Must remain symptom-free. If individual develops symptoms, then refer to the symptomatic scenarios.

Note: QUARANTINE keeps someone who was in close contact with someone who has COVID-19 away from others.  
ISOLATION keeps someone who is sick or tested positive for COVID-19 without symptoms away from others, even in their own home.

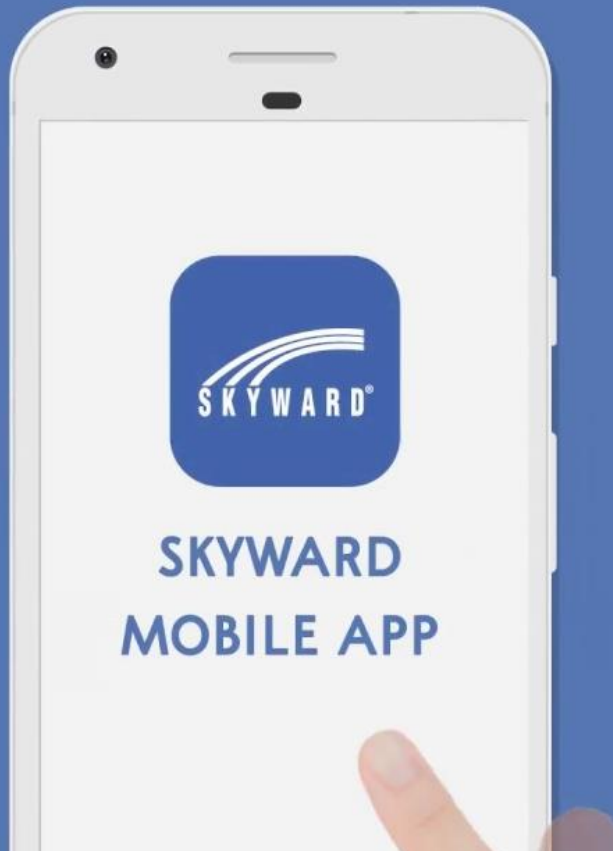
# Returning to School Guidelines

# MHS Information



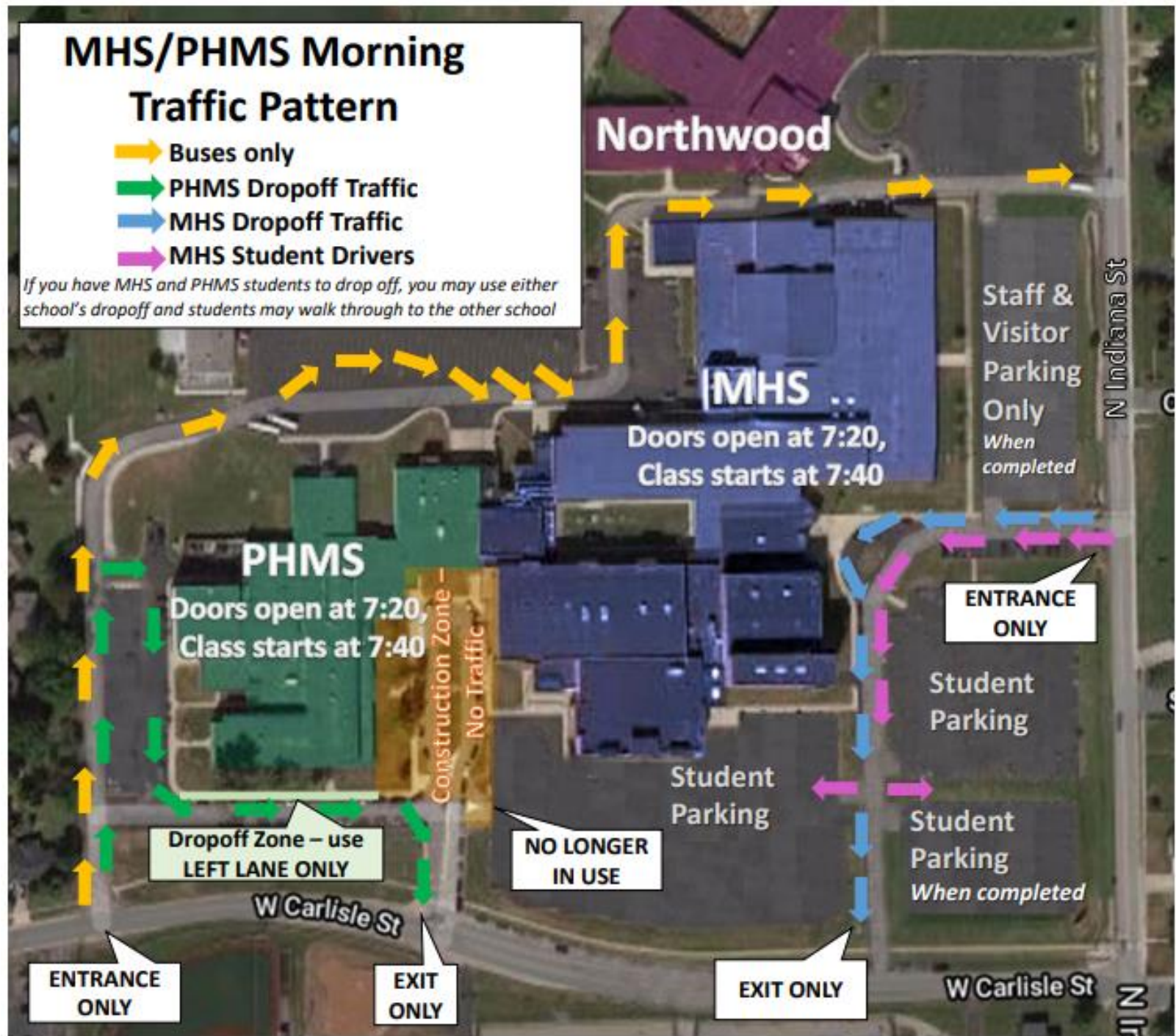
# Student Download the Skyward app.

- **Class Schedule** (pay close attention to the Room Number since most teachers are moving classrooms throughout the day to accommodate “live” learning for online learners)
- **Check Grades**
- **Mobile ID** for touchless scanning at lunch



# New MHS morning procedures.

Doors open at 7:20. Grab & Go breakfast on way to 1<sup>st</sup> Period. Class starts at 7:40.



**NEW Bell Schedule** with time between lunch periods for extra cleaning.  
(Note: **NEW start time of 7:40**)

Student Arrival & Report to Period 1 .....	7:20 – 7:40
Period 1 .....	7:40 – 8:30 (50)
Period 2 .....	8:35 – 9:23 (48)
Period 3 <b>(Announcements)</b> .....	9:28 – 10:17 (49)
Period 4 .....	10:22 – 11:10 (48)
Period 5 .....	11:15 – 12:55 (65)

A-Lunch 11:15 – 11:45 ..... Class 11:50 – 12:55

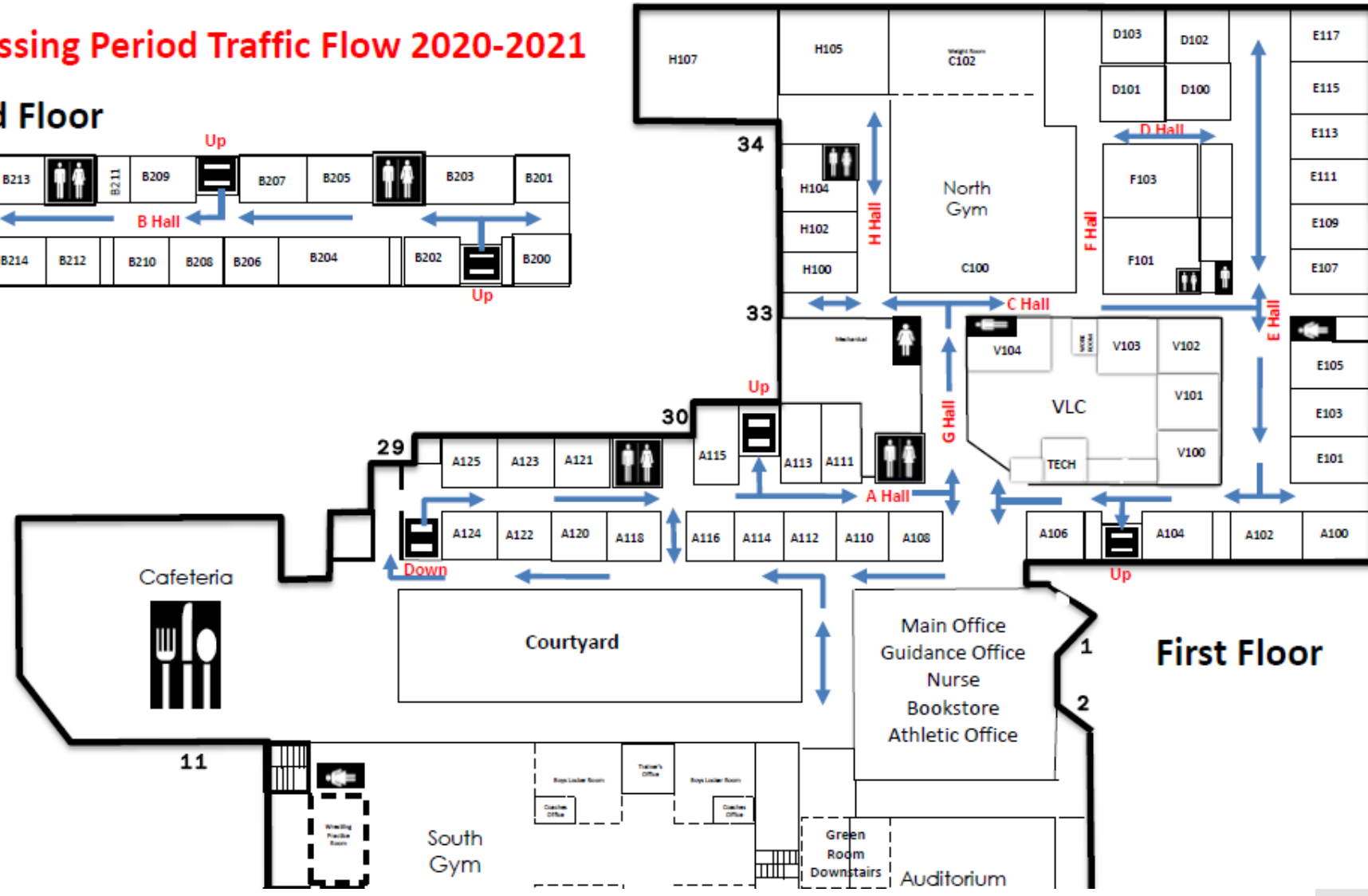
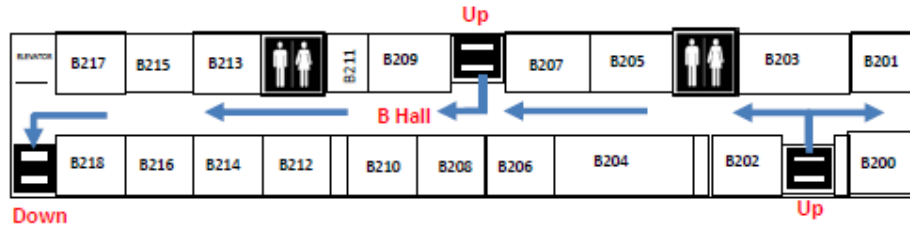
B-Lunch 11:50 – 12:20 ..... Class 11:20 – 11:50 & 12:25 – 12:55

C-Lunch 12:25 – 12:55 ..... Class 11:20 – 12:25

Period 6 .....	1:00 – 1:47 (47)
Period 7 .....	1:52 – 2:40 (48)

# MHS Passing Period Traffic Flow 2020-2021

## Second Floor



Passing  
Periods with  
**One-Way  
Hallways** and  
No Lockers.

- One-way loop around the VLC.
- A-Hall is one-way towards VLC entrance.
- B-Hall and new Glass Hallway are one-way toward cafeteria.
- Stairwells are one-way.

# Backpacks

# No Lockers

# Digital Textbooks

- Students may carry backpacks with them throughout the day. Students should carry Chromebook, charger, notebook, paper, and pen/pencil to each class.
- Students will not be assigned lockers to allow for more room in hallways.
- Students will not need to carry textbooks to and from school or between classes because we will be using digital textbooks. An exemption may be some small books (like English novels).
- Other course content will be available through Canvas.

# Cafeteria: Breakfast & Lunch

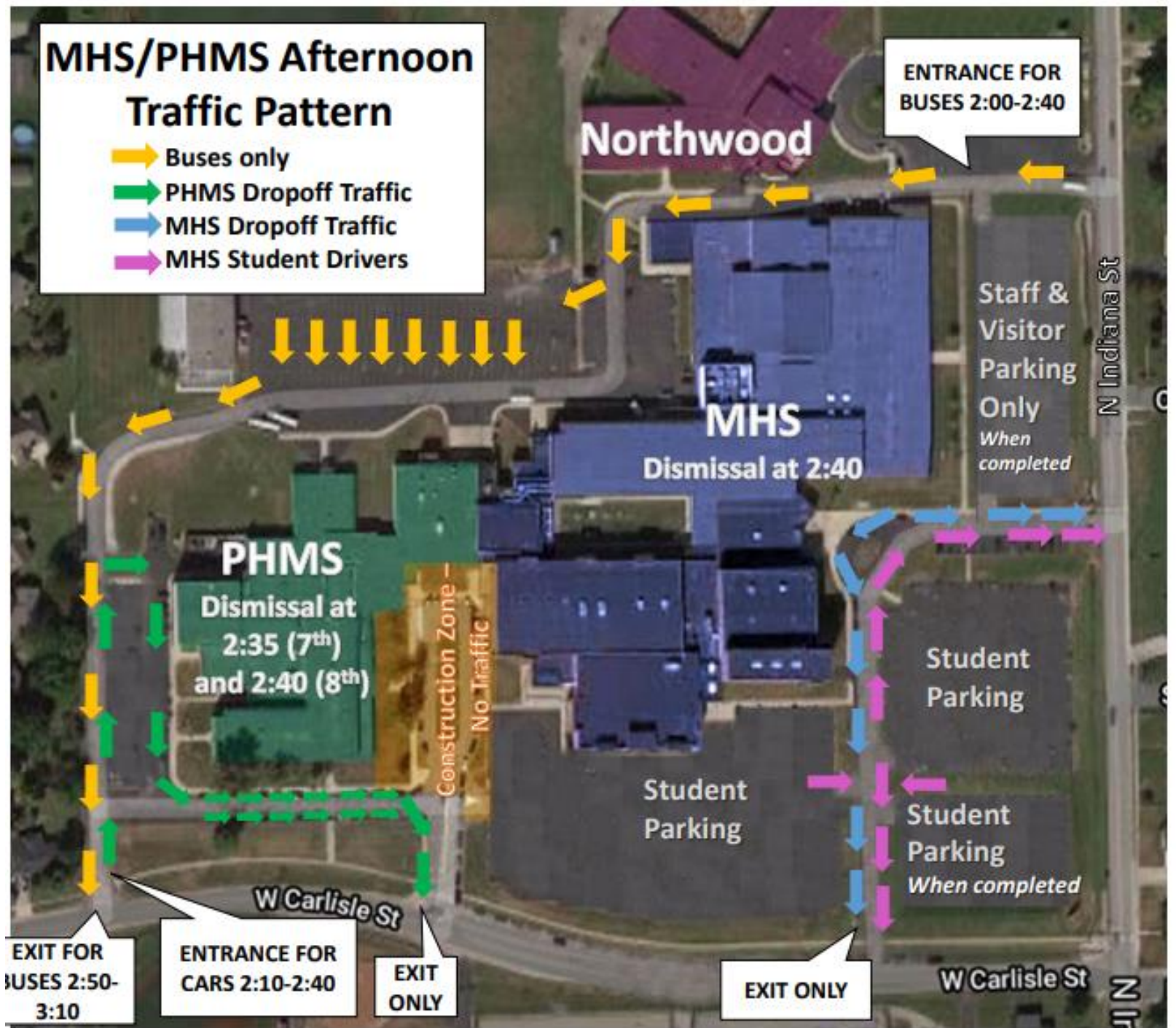
## **BREAKFAST:**

- Grab & Go Lunch Carts in Glass Hallway and Cafeteria
- Eat Breakfast in Classrooms
- Touchless scanning 2019-20 Student ID Card or Skyward App Mobile ID Card

## **LUNCH:**

- All lunch lines will have the same food options.
- Touchless scanning 2019-20 Student ID Card or Skyward App Mobile ID Card
- Tables are spaced out and have fewer chairs.
  - Tables in glass hallways added.
  - Courtyard seating for seniors during nice weather
- Select your own seat but keep same table throughout the semester
- Wear your face covering when not eating/drinking
- Throw trash away when finished eating

Afternoon Traffic: Arrive by 2:30 and park along curb. Student dismissal at 2:40.



# Other Important Information

- School Pictures for Grades 9-12: August 25-26
- Question about your schedule or want to see your counselor:  
<https://docs.google.com/forms/d/1iXoCdgtYlCZxOguRin4QH75fDCpdIKFg29gKTNd6lYs/edit>
- Make sure immunizations are up-to-date:  
<https://www.moorevilleschools.org/departments/health-and-safety/immunization-requirements>



# Day 1 Checklist

- Get a Good Night's Sleep
- Eat a Healthy Breakfast or Grab a MCSC Breakfast on the way to 1<sup>st</sup> Period Class
- Check Schedule for 1<sup>st</sup> Period Class Room Number
- Chromebook Charged
- Backpack, notebooks, paper, and pen/pencil
- Face Covering
- Hand Sanitizer (Optional)
- Water Bottle
- 2019-20 Student ID Card or Skyward App
- Ready to Learn

# Questions?

- Email Dr. Disney at [brian.disney@moorevilleschools.org](mailto:brian.disney@moorevilleschools.org)
- Visit our website:  
<https://www.moorevilleschools.org/schools/mhs>
- Follow us on Facebook and Twitter