

## CROSS SECTIONS

STUDENT BOOK	Chapter 11, page 351
TOOLBOX	Page 74

### GOAL

Cut sections from egg cartons and associate them to their corresponding views.

### OBSERVATION CRITERIA

1. What is a cross section ?

---

---

---

2. In drafting, when is it useful to make a cross section ?

---

---

---

---

---

3. What basic drafting line is employed in a cross section ?

---

4. There are arrows on the line mentioned in Question 3. What is their function ?

---

---

---

---

5. What does hatching mean in a cross section ?

---

### MATERIALS

- 4 one-dozen egg cartons (cardboard)
- retractable utility knife
- cutting mat
- scissors
- glue



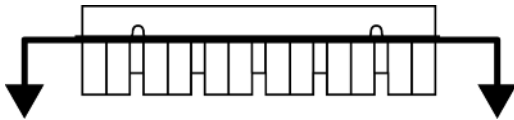


## PROCEDURE

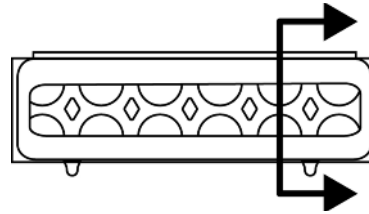
1. Set one of the egg cartons on the cutting mat.
2. Cut the carton according to cutting plane A (shown below).
3. Observe the cross section you have created.
4. Cut out this cross section from among the ones shown at the bottom of this page.
5. In the table in "Observations" on page 43, paste this view in its appropriate space.
6. Repeat Steps 1–5 for the other three cutting planes illustrated below.

### Cutting planes

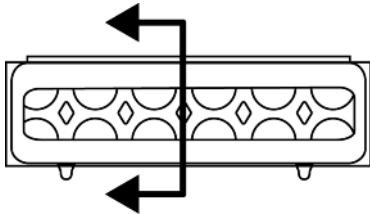
A



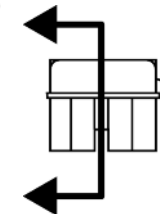
C



B

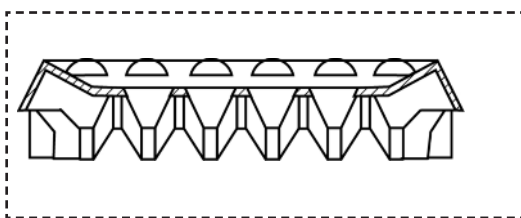


D

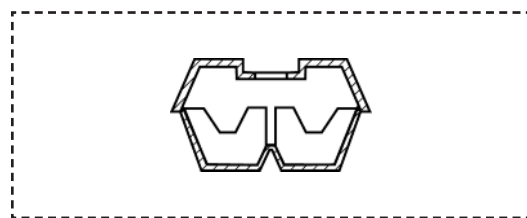


### Cross sections (to cut out)

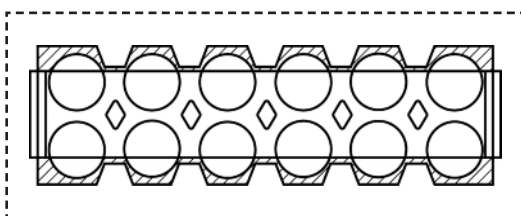
1



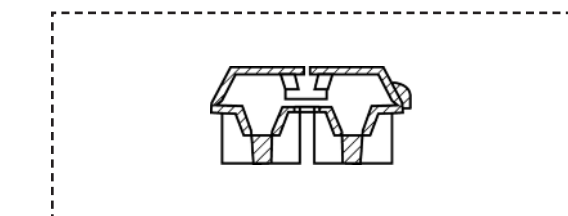
3



2



4



© ERPI Reproduction permitted solely for classroom use with Observatory.





