

# LOCATING THE FOCAL POINT OF A LENS

STUDENT BOOK Chapter 4, page 111

TOOLBOX Page 26

## Goal

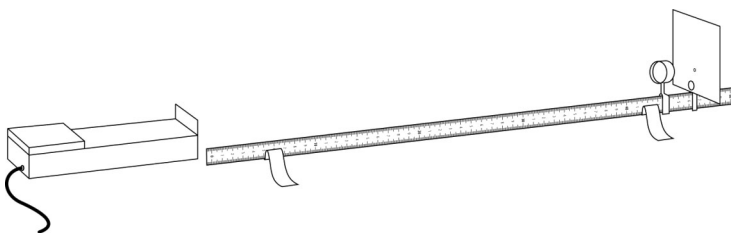
Apply a technique to locate the focal point of a converging lens.

## Materials

- converging lens(es)
- optical bench
- ray box
- screen (white cardboard)
- 1-m ruler

## Procedure

1. Secure the lens near one end of the optical bench.
2. Place the ray box 1 m away from the lens.
3. Place the screen behind the lens at a distance where a point of light is obtained.
4. Measure and record the distance between the centre of the lens and the screen.
5. Repeat steps 1 to 4 with other lenses, if applicable.
6. Put away materials.



## Results

Record your results in the table below. Give the table a title.

Title:

Lens	Location of focal point



Name: \_\_\_\_\_ Group: \_\_\_\_\_ Date: \_\_\_\_\_

## Reflecting on the lab technique

1. Are focal points of lenses the same distance?

\_\_\_\_\_

2. What corresponds to the focal point of a converging lens?

\_\_\_\_\_

3. What are the possible sources of error in this lab?

\_\_\_\_\_