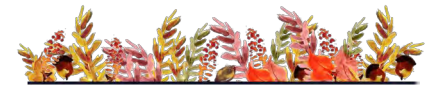




First Presbyterian Church
of Metuchen

Where God's Love Welcomes All



NOVEMBER 2021

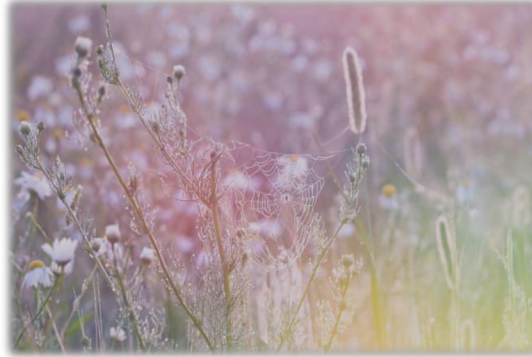
Parish News

INSIDE THIS ISSUE:

Stewardship: Welcome Home	2
Veteran's Day Remembrance	3
The Mouse Pipeline	3
A Farewell and Thank You	3
Advent Angels	4
Presbyterian Women	4
Music Ministry	5
Children's Programs	6
Youth Ministry	7
Adult Christian Education	8
Mission Volunteer Night	8
Poinsettia Order Form	9
Food Pantry News	10
An Appeal To Help Go Gold	10
Community Nursery School	10
MEAICA Hunger Walk	10
Reminders from Church Office	11
Church Clergy and Staff	11
Indonesian Fellowship	11

Pastor's Peace by Rev. Fred Garry

I went to heaven, -
'Twas a small town,
Lit with a ruby,
Lathed with down.
Stiller than the fields
At the full dew,
Beautiful as pictures
No man drew.



People like the moth,
Of mechlin, frames,
Duties of gossamer,
And eider names.
Almost contented
I could be
'Mong such unique
Society.

-Emily Dickinson

Sunday afternoon I stopped by the Social Center to have a piece of cake and offer Doris Moskal congratulations on turning 100. There was singing and well wishing. Doris worked the room like a champ. In the end, we spoke about pets and birds.

The day before, Saturday afternoon, our granddaughter, Nadia, came for a visit. It was time to celebrate her birth as well. It was her first birthday. She too worked the room; her work was looking for places to climb or to relocate items to the floor. Here, too, there was cake and singing. Other than decades between, the only other difference between them was that Nadia was able to wear as well as eat her cake.

I found myself wondering over each of their lives. With Doris I was wondering backwards. She was born the year after the Spanish Flu, would have been a teenager during WWII, and perhaps, able to remember the world before the automobile became omnipresent. If I asked her, I am sure she could recount the first time she watched a television or where she was when she watched the moon landing. Polio was such a defining part of life in her early years until it wasn't.

With Nadia, I wondered, what will be her markers? So much of the future looks ominous right now. Global warming, political strife, technological intrusions and what some are calling the first of many pandemics. But if I look back on Doris' first ten years there was the great flood of the Mississippi, the stock market crash, and the dust bowl, all of these coming on the heels of the First World War.

The larger events of a generation, or a decade even, can cause concern. What does it mean to be alive at a time like this? How do the cataclysmic events shape us and influence us? I believe they do. We do not live in a vacuum. Yet, for the most part, the larger forces of a century seem to happen around us, above us, even.

When I try to imagine Nadia's life forward or Doris' life looking back, I am reminded of a poem of Emily Dickinson. She spoke of heaven as "a small town." What I took from her words was this: the splendor of life is not seen most keenly in the big moments, nor is a lifetime determined by forces and cataclysmic events. We find the kingdom of God in the ordinary, the beauty "no man drew."

Were we to remember this, now, in the midst of these times, remember the beauty to be found in "still" fields and "gossamer", perhaps the weight of worry would be less for us. The weariness I hear so often might find rest or strength by walking such a small town as this. So much fear and distrust can be lost in "eider names"—to call upon beauty.





Therefore, welcome one another
As Christ has welcomed you, for the glory of God.

- Romans 15:7

We launched our Stewardship 2022 last month and as you consider how your giving might look like for the coming year, we invite you to prayerfully reflect on the following Scripture verses.

Let not our generosity be dictated by mood or emotion but, let it be as steadfast as God's Love is for us.

FAITH: The Seed of Stewardship



Each of you should use whatever gift you have received to serve others, as **faithful** stewards of God's grace in its various forms. (1 Peter 4:10)

Anyone who does not provide for their relatives, and especially for their own household, has denied the **faith** and is worse than an unbeliever. (1 Timothy 5:8)

GIVING / SERVICE: The Heart of Stewardship



In everything I did, I showed you that by this kind of hard work we must help the weak, remembering the words the Lord Jesus himself said: "**It is more blessed to give than to receive.**" (Acts 20:35)

Whatever you do, work at it with all your heart, as working for the Lord, not for human masters, since you know that you will receive an inheritance from the Lord as a reward. **It is the Lord Christ you are serving.** (Colossians 3:23-24)

GENEROUS GIVING: The Widow's Offering



Jesus sat down opposite the place where the offerings were put and watched the crowd putting their money into the temple treasury. Many rich people threw in large amounts. But a poor widow came and put in two very small copper coins, worth only a few cents. Calling his disciples to him, Jesus said, "**Truly I tell you; this poor widow has put more into the treasury than all the others. They all gave out of their wealth; but she, out of her poverty, put in everything—all she had to live on.**"

(Mark 12:41-44)

STEWARDSHIP: Utilizing and managing all resources God provides for the glory of God and the betterment of His creation.

The Bible provides these and many other examples of being a good Steward for our church. We need our members to follow these examples and make a generous pledge to help the First Presbyterian Church of Metuchen support our Mission and Vision.

Please join the First Presbyterian Church Community by making your **pledge to our church on November 14, 2021.** You can make your pledge online by simply going to fpcweb.org/give. A pledge card may also be downloaded.

Thank you!

At the 11th hour of the 11th day of the 11th month, the guns fell silent on the Western Front, to bring to an end the First World War. Since then, the *"Bells of Peace": A World War I Remembrance* has been held annually with a national tolling of bells on Veterans Day in honor of those who served and sacrificed during WWI, and those injured and traumatized in battle.

During this hour, there will be 21 peals of the church bells, akin to the nation's highest honor of the 21-gun salute given to those who sacrificed their lives for our freedom.

At this hour, FPC Metuchen will toll her bells for the Doughboys, a nickname to the American infantrymen during World War I. If you are not in the vicinity, you may still participate by downloading on your phone an app developed by the Doughboy Foundation "Bells of Peace: WW1 Remembered." Let us not forget.

Learn more by visiting: <https://doughboy.org>



A World War I Remembrance

11:00 a.m. on November 11



THE MOUSE PIPELINE

We just learned (actually warned) that a Church Mouse has established residence in the First Presbyterian Church of Metuchen with lots of stories to share. He seems to know a lot of stories which you and I might not. He's agreed to let us know what he's heard about our church family in the Parish News each month. We just have to leave him some cheese.



This is in fact a great opportunity to hear about CELEBRATIONS (good news) and TRIALS (challenges or concerns) that our friends at FPC are experiencing during this time of limited togetherness.

This month, he gave us two stories that you may not know. Have you heard that:

- Gail and Howard Stein will be moving from Metuchen to Arizona by November. We thank them for their many contributions and will miss them a lot. Good luck, dear friends!
- Rev. Fred and Kathy Garry's daughter, Zoe, was married to Andrew Long-Higgins here in our church on October 10. Congratulations to the happy couple and their families!

If you know of any other news that we can share, please email us: fpc@fpcweb.org.

PS: We have to establish a budget line for CHEESE!



FAREWELL AND THANK YOU TO THE STEINS

When people learned that Gail and Howard Stein were moving to Arizona, the common reaction was, "What are we going to do without them?" That's a valid question as they've been an integral part of our FPC family since

they joined us in January 2016. It's hard to imagine a church activity they weren't part of, including:

- ◇ Ushers – too many Sundays to count!
- ◇ Deacons – Co-moderator and Treasurer
- ◇ Head Usher
- ◇ Community Dinners
- ◇ 30-Hour Famine
- ◇ Invested in Strategic Planning
- ◇ Virtual Ministry
- ◇ Communications Committee

And this is just a sampling of their many involvements.

They helped bring us into the digital age with their leadership on the Facebook Live streaming of worship – starting with Gail's phone and Howard's tripod – and transitioning to our current professional digital system. Gail learned the system and trained the live streaming team. On most Sundays during Covid, you could find her at the camera making sure our services were broadcast to those who couldn't attend make it to worship in person.

Working up to the last moment, their most recent contribution was helping develop and execute our new website, www.fpcweb.org. Their beautiful church photo is featured on the home page. We can think of them every time we visit the website!

The Stein's last Sunday with us is October 31. Please join us in thanking Gail and Howard for their faithful service and utmost dedication to FPC. We wish them God's blessings and the best of everything in their new home in Arizona!

Thanks to Jane Meyer for this wonderful tribute.



**BE AN ANGEL FOR SOMEONE
THIS CHRISTMAS !!**

In keeping with the Christmas Spirit, we invite everyone to joyously share and bless the children at Elizabethport Presbyterian Center and the senior residents at both Care One at the Highlands and Roosevelt Care Centers. This wonderful ministry and our gifts are always greatly appreciated!

Look for the 2 Advent Angel trees— one in the Church Narthex and another in the Social Center Foyer. For the Elizabethport children, we are collecting NEW mittens, hats and socks. Due to the current circumstances, there are only 40 children enrolled: 20 girls and 20 boys. Decorated bins will be placed by both trees to collect items from which the children will be able to choose from. Any extras will be donated to the Elizabethport Center.

Also, we will have angels that you may choose from for the residents of Care One at the Highlands and Roosevelt Care Center, each having about 40 residents.

It's easy to be an Angel! Just simply —

- 1- Select an Advent Angel(s) as soon as possible and leave your gift under the Advent Angel tree **no later than 9:30 am on Sunday, December 19.**
- 2- The Angels are color-coded with information about the destination of the gift, as well as gift suggestions.
- 3- All gifts may be wrapped and/or placed in gift bags.
- 4- Most importantly, SECURELY attach the Advent Angel to the gift bag or wrapped gift.

Our Deacons will deliver the gifts to the Care Centers on Sunday, December 19th after Worship and to Elizabethport on Monday, December 20 so the gifts arrive in time for Christmas.

For any questions, please contact Chris Van Pelt by call or text: (732) 715-6097, cell. (Feel free to leave a message if she does not pick up.)

Your Advent Angel gift may be the only gift received by that child or senior resident! **Thank you for sharing God's love this Christmas and for being an Angel!**



PRESBYTERIAN WOMEN

THANK YOU!

The Presbyterian Women extend a big "THANK YOU" to all who donated items for our 2021 Fall Rummage Sale and to our wonderful volunteers who gave their time so generously to sort, set up, organize, cashier, clean up and make it happen! It takes a Church village to make this a blessing for so many in our community.

During this special time of challenges, your support will enable us to continue our community outreach to our many mission projects.

Every woman in our congregation is a Presbyterian Woman and we can not be more thankful for your dedication to the PW cause to assist those in need.

A year and a half into the COVID pandemic, the Presbyterian Women have been making changes to fit in our new normal. We had a one day rummage sale in June before returning to our two day sale in the fall. PW Bible Studies and Coordinating Team meetings have been on hybrid. As the holidays are approaching, we revisited our annual Holly Fair event and felt that changes were necessary to offer it once again. Thus for this year, we are offering a reimagined Holly Fair and Jewelry Trunk Show. The event will just be for a single day and dinner will be eliminated. However, this event will focus on jewelry and Christmas decorations.

With jewelry being the biggest attraction at the fair, there will be a comprehensive collection of necklaces, bracelets, earrings, rings, watches, jewelry sets— a collection that PW has saved for over 2 years and now presented for everyone's shopping pleasure.

Here's how you can be part of this-

- Volunteer to help set up on Nov. 18 and 19 at 10 am
 - Volunteer on the day of the event
 - Donate gently used or new vintage and contemporary jewelry (Yes, we are still accepting donations!) Drop off at the Church office by November 8th.
 - Donate individually wrapped baked goods
- Jump start your holiday shopping! Shop early!
Contact us: Cindy O'Neill mimabook@aol.com
Lori Kellner lgkellner@gmail.com

Mark Your Calendars-

HOLLY FAIR Reimagined and JEWELRY TRUNK SHOW

**Saturday, November 20
Social Center Dining Room**

10 am to 3 pm



MUSIC MINISTRY

Ruth Duck is an internationally renowned hymnwriter with texts appearing in many denominational hymnals. She wrote this paraphrase of Psalm 107 in 2007, but the words are as timely in 2021, 20 months into a pandemic, as they were in 2007.

"Give Thanks To God Who Hears Our Cries"

Give thanks to God who hears our cries
and saves in troubled days
With wonderous works to humankind
that call for highest praise.
Let all who know God's saving love
sing grateful songs always.

If you have ever wandered where no human help
was near,
And in your trouble cried to God,
who rescued you from fear,
Then thank the God of steadfast love
who dries your every tear.

If you have ever lived inside the prison of your gloom
And cried to God, who broke your bonds
and raised you from your tomb,
Then praise the One who sets you free,
who makes dry places bloom.

If you drew near the gates of death,
too sick to eat or dress,
And cried to God, who heard your voice
and healed all your distress,
Then sing with sounds of holy joy;
God's wonderous works profess.

If you have felt your courage fail before a violent sea
And cried to God, who stilled the storm,
and made the wild wind flee,
Then in the congregation praise the One
who heard your plea.

So praise the One whose love is great,
whose kindness is well-known.
Consider well the healing hand
and help you have been shown,
And tell the world what God has done,
Praise God and God alone!



After a long hiatus, the congregation at the October 10 worship service welcomed the angelic voices of our Jubilee and Junior Choir as they sang "Arky, Arky." The Westminster Choir likewise sang the anthem, "I Choose Love."

Children's Choirs are back in rehearsal after a break of 18 months. It is exciting to hear children sing together again! The Jubilee Choir (age 4 - grade 2) and the Junior Choir (grades 3 - 6) are currently rehearsing on the front porch of the sanctuary building. As the weather gets colder, we will move inside to the Narthex with all doors open. The Westminster Choir (grades 7 - 12) meets in the Choir Room as a part of youth group on Wednesday evenings. We look forward to welcoming any new children or youth that love to sing!

The Handbell Choirs are rehearsing in the sanctuary and are also looking to welcome new members. We continue to observe Covid protocols to maintain a safe environment for everyone.



Questions about Music Ministry? Please feel free to contact Brenda Day brendaday@fpcweb.org

FROM YOUR: *DIRECTOR OF CHRISTIAN EDUCATION*

We are God's children, fearfully and wonderfully made.

1st Tuesday Club

November 9th from 4:30 to 5:00 pm

This energetic group of 4 year old's to 2nd graders will meet once a month in Hale Park.

Junior Club

November 18th from 5:30 to 6:15 pm

Our 3rd to 6th graders will visit the Food Pantry and help stock the donations.

PUPPETEERS!

The Puppeteers had a busy October performing puppet skits for our children in Sunday School and the congregation during Children's Time. New puppeteers in 7th grade and up are welcome to join!

For details contact: Kat Davis at katddavis@gmail.com and Nancy Leardi, nleardi@fpcweb.org



For 8th Grade to Senior High

COFFEE CHAT with Grace

Sunday, November 14th

8:30 am in the Social Center Kitchen

This month the group will be baking in the Social Center. Join the fun with Grace Anne as you enjoy some home-made brownies for yourself and some to share with a friend in need or the food pantry.

Christmas Pageant 2021

December 24, 4:00 pm

This year's Christmas Pageant will once again be held outside. The pageant will be held on December 24 at 4:00 pm weather permitting. We recommend bundling up!



Once again we will come together as a community to present the story of the Nativity. Audience members will watch from the sidewalk area as the story of Christ's birth is reenacted on the Front Lawn of the Sanctuary. Younger children are encouraged to participate in non-speaking parts as sheep, shepherds and angels. Older children can participate as townspeople, innkeepers or as narrators. We also need adult volunteers to help with the management and setup of the pageant.

To sign up your child or to volunteer to help, please email:

fpcpageant@fpcweb.org by November 14

DATES TO REMEMBER:

- | | |
|-------------|---|
| November 14 | Deadline to send email expressing interest in participating. Please include names and ages of participants. |
| December 12 | 10:45 am – 11:30 am Rehearsal/Costumes |
| December 19 | 10:45 am – 11:30 am Dress Rehearsal |
| December 24 | 3:15 pm, Report for show 4:00 pm SHOWTIME |



Questions about any of our Children and Young Adult Programs? Contact our Director of Christian Education Nancy Leardi : (732) 491-2264 or nleardi@fpcweb.org



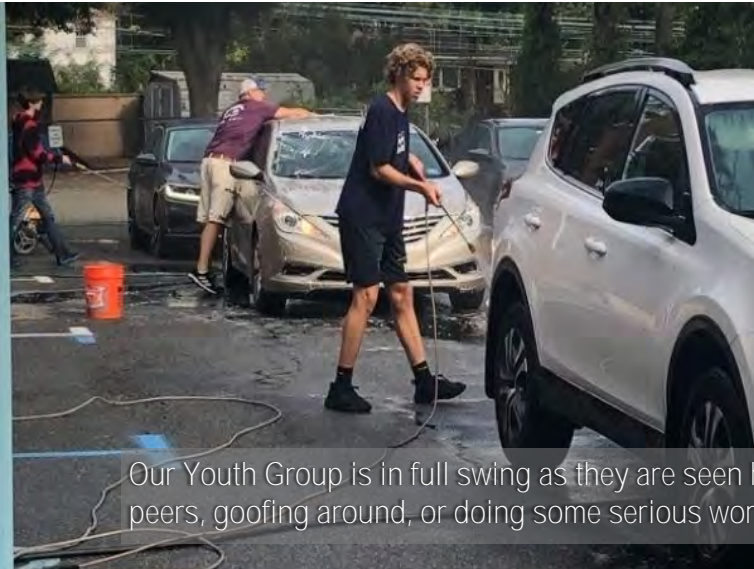
YOUTH GROUP EVERY WEDNESDAY

5:00 - 6:00 pm Junior High in Social Center Field *

6:00 - 6:30 pm Junior and Senior High Dinner (\$3)

7:00 pm-8:00 pm Senior High in Social Center Field *

* In case of inclement weather, this will be in the Social Center Building or tent.



Our Youth Group is in full swing as they are seen here in action—having fun with their peers, goofing around, or doing some serious work at the recent Carwash fundraiser event.



On Saturday, October 16, we held our first Car Wash fundraiser for the 2022 Habitat for Humanity trip! Sunshine, donuts, power washers, and the incredible hard work of our youth and volunteers made this morning really fun.

It was a great success, raising \$577.72! Thank you to everyone who was in the suds and to all who brought their car for a special deluxe premium wash by the best in town.

I want to extend my gratitude to all the youth for the incredible warm welcome. In even the few short weeks I've been here, the youth, the youth leaders, and the commission and families have been an absolute inspiration. I'm excited to learn and create alongside you all this year.

As we work together to make this year a meaningful and exciting one, stay tuned for upcoming events with Youth Group - and with Young Adults!

If you have any questions, any ideas, want to chat, grab a bagel - you can connect with me at abair@fpcweb.org and 989-859-2083.

Grateful to be in this ministry with you,
Rev. Ashley Bair

Our Wednesday night meal coordinator this year is Samantha Aldinger with Carla Trolaro assisting. Our thanks to both for taking this role, and all of the families who have signed up to serve a meal. This year we are hoping to fill youth dinners with voluntary signups using the Google doc below:

<https://docs.google.com/spreadsheets/d/1besymNCF7jtlc30UW4DB6yBdnKGZ6r5gtwucT08Yfqg/edit?usp=sharing>

Our Youth Group continues to observe COVID Guidelines:

- Please make sure your youth comes to Youth Group with a mask, because if a youth is inside the Social Center for any reason (inclement weather, bathroom use, etc.) they must wear their mask.
- Youth are encouraged to self-cleanse both before and after dinner.
- Youth are encouraged to self-select their dinner group to aid in trying to maintain weekly dinner cohorts.
- Youth are encouraged to sit every other seat.
- Dinner serving lines will adhere to social distancing to the greatest extent practicable.
- Food sharing is discouraged.
- Youth may be unmasked to eat while seated.
- The expectation is to provide physical distancing to the greatest extent possible.

ADULT ENRICHMENT PROGRAM



HORIZONS BIBLE STUDY

What My Grandmothers Taught Me

November 1, Monday
7:00 p.m.
In the PW Lounge
and by Zoom

This NEW Horizons Bible Study helps us learn from the women in Matthew's genealogy of Jesus.

ALL congregants are invited!

This study meets every **first Monday of each month**, from October 2021 through June 2022, at 7:00 pm in the PW Lounge or via Zoom—your choice!

This month: **Lesson Two: Tamar with Scripture: Genesis 38**

The study will be led by Deb Teall with a promise to be sprinkled with eclectic but appropriate music. The lessons may be accessed from our website.

<https://fpcmetuchen.org/ministries/presbyterian-women/>

If you would like a hard copy, contact Deb Teall.
The zoom link is below:

[https://us02web.zoom.us/j/8641671638?](https://us02web.zoom.us/j/8641671638?pwd=OGNFMdJTSk5SbTFBZmcrWmZ6aFRBQT09)
[pwd=OGNFMdJTSk5SbTFBZmcrWmZ6aFRBQT09](https://us02web.zoom.us/j/8641671638?pwd=OGNFMdJTSk5SbTFBZmcrWmZ6aFRBQT09)

Use meeting ID: 864 167 1638 Passcode: PW270
Call, text or email to sign up for one lesson or all nine:
Deb Teall: 908.917.3990 | debteall@optonline.net

GOSPEL STORIES

A Weekly Pastoral Bible Study
Wednesdays at 10:30 a.m. in the PW Lounge

The weekly bible study with Rev. Garry focuses on the teachings of Jesus, comparing the different ways Matthew, Mark, and Luke tell the same story, but with a unique twist for each. Other times we will look to the where and how the Gospel writers have placed and arranged the teachings of Jesus, but each and every time we will devote a little time to a specific teaching and ask: how are we to live this.

Can't make it in person? Join by Zoom:

<https://us02web.zoom.us/j/84711673419>

Meeting ID: 847 1167 3419



Come by the Social Center and start your day with laughter, fellowship and a filling of scrumptious breakfast that only Rev. Garry can prepare! Call us in the Church office if you have any questions.

Join us!

MISSION
VOLUNTEER
NIGHT
NOV. 22



Young and old, the volunteers came with lots of love for the October Mission Volunteer Night packing Busy Day Soup. Over the course of the night, a total of 50 packages were put together that will benefit the Food Pantry clients. This month is all about Thanksgiving and we hope to see more of you to join us.

POINSETTIA ORDER FORM

In keeping with our Christmas tradition, we invite our congregation and friends to help us decorate our Sanctuary, Chapel and Narthex with poinsettias through our Poinsettia orders. Get a head start on your holiday planning by ordering now!

- Deadline for ordering is **Monday, December 6th**.
- Make checks payable to the "*First Presbyterian Church*". Bring any weekday or mail them to the church office: P. O. Box 385, Metuchen, NJ 08840. We will accept cash, too!
- The names of those remembered and those who donated will be listed in the worship service bulletins on Sunday, December 19th and Christmas Eve.
- **The plants may be taken home after the 11 p.m. service on Christmas Eve, or after worship on December 26th.**

Our Deacons will take the remaining poinsettias to shut-ins and families who have lost a loved one in recent months.

Your Name: _____

Phone No.: _____

For Bulletin Listings of Donors (Please print.)

Given by : _____

In Memory of: _____

In Honor of: _____

In Gratitude : _____

Number of plants @ \$9.00 each _____

Total Amount Enclosed \$ _____

Please mark [x] one of the following:

- [] I will take my plant home after the 11 PM Christmas Eve Service.
- [] I will take my plant home after the December 26th Service.
- [] Leave poinsettia for Deacons to deliver.



FOOD PANTRY NEWS
November 22, 7:00-8:30 pm
Social Center Auditorium

FPC Food Pantry will be packing 85 Thanksgiving baskets consisting of canned goods and fresh produce. The baskets will be distributed to clients on Tuesday and Wednesday morning along with a \$25 gift card for each family to buy their holiday meat and other fixings as they see fit.

All are welcome to help pack! We also welcome monetary donations! Thank you!

**The Metuchen-Edison Area
 Interfaith Clergy Association**



**HELP US HELP OUR
 NEIGHBORS IN NEED!**

**TAKE PART IN THE
 HUNGER WALK**

Sunday, November 7th 1:30PM
Starting point

FPC Metuchen Social Center

Download the pledge form @
<https://fpcmetuchen.org/resources/forms/>

Let's join our Faith community to fight hunger. Bring your friends and family for a fun walk and to help raise pledges. 70 percent of the pledges will help alleviate hunger locally, and 30 percent will help fight global hunger. Download the form to secure sponsors for your walk.

Let's support our very own Girl Scout!



My name is Veronica Lijeron and I have been a Girl Scout with Troop 80612 for 12 years. As my Gold Award project, I am creating recipe books for the families of the First Presbyterian Church Food Pantry.

After participating in our 30-Hour Famine for years, I was inspired to use my project as a way to help local food insecure families find meals that are both affordable and nutritious. As part of my project, I am printing recipe books for each family. I invite our church family to help me achieve this project also as I seek to earn the Girl Scout Gold Award. To make this possible, I will be accepting donations throughout November. If you would like to donate to my project, please send cash or check donations to the church office with the memo, "Food Pantry Recipes," and feel free to contact me with any questions. My email address is veronica.m.lijeron@gmail.com.

Thank you for your support!



AM & PM K-Wrap Program

- A hands-on theme-based program that encompasses literacy, math, science, social studies, cooking and art
- Topics include: The Solar System, The Human Body, The Great Outdoors, Bats, Spiders, Pirates, The Ocean, Mindfulness, and more!
- Program is taught by experienced CNS teachers
- Supervised "walking bus" to/from Moss School included
- Lunch is eaten at CNS (peanut/tree nut free school)
- Outdoor and indoor play each day
- Program times are 9:00-12:15 or 11:45am-3:00pm (possible extended day)

270 Woodbridge Avenue 732-491-2240

www.communityns.org



First Presbyterian Church of Metuchen

CHURCH CLERGY AND STAFF

CLERGY

Rev. Dr. Fred Garry732-491-2330

Senior Pastor/Head of Staff fgary@fpcweb.org

Rev. Ashley Bair732-491-2260

Interim Associate Pastor abair@fpcweb.org

Rev. Robert A. Beringer, Pastor Emeritus

Kristy Woodrow, Seminarian Intern

CHRISTIAN EDUCATION

Nancy Leardi732-491-2264

Director Christian Ed. nleardi@fpcweb.org

Kat Daviskdavis@fpcweb.org

Christian Education Production Leader

MUSIC MINISTRY

Brenda Day732-491-2266

Minister of Music brendaday@fpcweb.org

Elaine Hansenehansen@fpcweb.org

Assistant Bell Director and Accompanist

SUPPORT STAFF

Sue Harmon732-491-2302

Dir. of Operations & Finance sharmon@fpcweb.org

Jonathan Hollenbeck732-491-2270

Facilities Manager jhollenbeck@fpcweb.org

Bob O'Connell732-491-2270

Facilities Assistant boconnell@fpcweb.org

Vicky Lacson732-491-2301

Admin. & Comm. Coordinator vlacson@fpcweb.org

Nick Spadavecchia732-491-2305

Comm. Consultant nspadavecchia@fpcweb.org

Nate Brownnbrown@fpcweb.org

Technician and Sound Design Consultant

Merry Matlock732-491-2262

Senior Services Coordinator mmatlock@fpcweb.org

Colleen Walker732-491-2303

Office Assistant cwalker@fpcweb.org

Sarah Teti732-491-2325

Food Pantry Coordinator foodpantry@fpcweb.org

COMMUNITY NURSERY SCHOOL

Fran Brennan732-491-2242

Director/Treasurer fbrennan@fpcweb.org

Colleen Smith732-491-2242

Head Teacher csmith@fpcweb.org

Thank you everyone for your continued support during this time.

GOD'S WORK, OUR HANDS

YOUR GIFT, YOUR CHOICE

DIRECT

Cash or check donation into the plate are always welcome!

ONLINE

Please click here to donate now:

<https://tinyurl.com/y8ffksu4>

TEXT TO DONATE

Make a donation via Text message! Simply text to: **732-479-8245** an amount (no dollar sign needed) to this number and follow the prompts to complete your donation!

GIVE+ APP Search "Give Plus Church" in your phone App Store, download the app and find Church name by zip code 08840.

Thank you for your generous support!



NOVEMBER 7
Daylight
Saving Time

INDONESIAN FELLOWSHIP

Pulpit Supply for November

November 14 Rev. Ferdinanda Pattipeilohy

November 21 Local Pastor

November 28 Rev. Hennie Wattimena

In-person worship service in Indonesian language is at Noon in the Sanctuary of FPC. All covid safety protocols are still observed. The Worship Services will continue to be streamed live through Facebook as well.

If you have questions you may contact Norma Tambingon or Sandra Laluw.

*Bersyukurlah kepada TUHAN
sebab Ia baik,
kasih-Nya kekal abadi.*

- Mazmur 107:1

NOVEMBER 2021 PARISH NEWS

FIRST PRESBYTERIAN CHURCH OF METUCHEN

270 Woodbridge Avenue, Metuchen, NJ 08840

NONPROFIT ORGANIZATION
US POSTAGE PAID
NEW BRUNSWICK, NJ
PERMIT 746

Address Service Requested

TO:



The information contained herein is for Church use only. Individuals using this information must receive permission of the Session of the First Presbyterian Church of Metuchen, NJ.

Stay up to date with just one click!

We are now using Mail Chimp to bring to you the latest church happenings. Sign up to make sure we have your correct email address.

Visit the church website, send an email to fpc@fpcweb.org or use your cell phone to go directly to the link using this QR code.

We promise not to spam you!



First Presbyterian Church of Metuchen is a congregation of the Presbyterian Church (USA).

Parish News Submission

To submit an article for the Parish News, email vlacson@fpcweb.org or see us at the church office. Deadline for submission is the 15th of the month.

Church Office

270 Woodbridge Avenue, Metuchen, NJ 08840
Office Hours: Monday– Friday 8:00 am to 4:30pm
Telephone: (732) 491-2300 Email: fpc@fpcweb.org

Sunday Worship Service 9:30 am

Online Sunday Morning Worship : 9:30 am

Livestream on FPC Metuchen Facebook