



PASTOR'S PEACE by Rev. Fred Garry

INSIDE THIS ISSUE:

Pastor's Peace	2
Clerk's Corner	2
Church Reopening	2
That You May Live	2
Workshop of Wonders VBS	3
Children's Program	4
Youth Group	5
Music Ministry	6
Adult Christian Education	7
PW Rummage Sale	8
Help Needed with Livestreaming	8
One Great Hour of Sharing	8
Reflections on Juneteenth	9
Pride Month	9
CWS Blankets	10
Community Nursery School	14
Celebrating the Class of 2021	14
Cartoon	14
Reminders from Church Office	15
Church Clergy and Staff	15
Indonesian Fellowship	15

A month ago Kathy and I drove to Guilford, Pennsylvania. Guilford is a few square miles of farmland just outside of Chambersburg, not far from Gettysburg. It's hilly and in April it was very green and lush.

We were looking for a cemetery where the Tritles and Snyders and Cookes are buried. Beside a Lutheran Church on Grindstone Hill we found them just beyond the creek.

Eight generations ago, in the 1750s, Jacob Trittle came from Germany and settled with his wife Anna and teenage son Johann and farmed in the valley of Guilford. Through the next century they remained and married Cookes and Snyders. After the Civil War, George Trittle took his family west, first to Indiana, then Iowa. Ultimately the Trittles would spend fifty years in South Dakota until they traveled west again to Washington settling in the Wenatchee River Valley till this day.



I have walked many graveyards, but there is something different when you ramble through markers of your ancestors. We were walking over generations. I took some photos but mostly I tried to find a sense of place. What is this place?

When we left, I asked my phone for directions to Chambersburg. The phone said, "turn left" as we drove out of cemetery. But I didn't turn; I paused. I stopped the car and looked ahead. I felt pulled to go forward, not left. So we went straight.

Within a few hundred yards of the cemetery we found ourselves on a narrow twisting road following a creek. The road rose and fell with the ground. All of sudden, I realized what I was driving on. We were following the path that the families would have taken on foot, on a horse, in a wagon to come to church. For generations, my ancestors walked here. It was more than a road to take; it felt more like a way to keep.

With each dip and twist in the way there was a sense, a feeling, of movement. We were going with them on the path to burials and baptisms, weddings and Easter mornings. And we were heading home. There was a coming and a going. It was as if I could see them making their way to worship, to joy and sorrow, to beginnings and endings and then the slow walk back to fields and farms.

I am sure there are some who find this a bit too strange, the feeling of being pulled toward something, drawn, and that is fine. Yet, as I have spoken to people, they, too, have had a moment in a house, in a town, on a hillside where they were pulled forward.

Eight generations, 270 years ago, is a great distance. There is no way to look at such a distance and speak of being determined or influenced by people who lived so long ago. They are names on a tombstone. Yet, the moon is a great distance away and it pulls the tide. There is an invisible connection of gravity moving the sea.

*Consider the generations
who walked before you,
sat in your pew, sang
the same hymns.
Imagine our lives as a
confluence.*

Continued on page 2



PASTOR'S PEACE *Continuation*

In the moment where I was told to go left and I went straight there was a sense of tidal movement. There was no grand epiphany or hidden treasure at the end of the creek. But there was a sense of confluence, a communion, being drawn together.

As a pastor I am ever mindful of the generations that come and go in a church. To baptize your child here, to bury your beloved here, to see a wedding, to join your voice in the candlelight singing of Silent Night on Christmas Eve, these moments fill us, restore the beauty of our soul. The generations need not define or determine the church. So often those who glorify the past do it the least service. The church is ever a living out much more than it is a museum of former glory. Better to live out these days knowing such was the challenge of those who came before. They too had to live out their days.

As we move toward a moment of true regathering, where we can join our voices in song, consider the ground, the path to the sanctuary. Consider the generations who walked before you, sat in your pew, sang the same hymns. Imagine our lives as a confluence.

Let us be drawn together.



Changes are afoot as the impact of the vaccine is taking effect. Beginning June 6th, we move from reservations for worship to sign-in. Seating will continue to be socially distanced, but you will be encouraged to find an available seat. We will no longer require only one way in and out of the sanctuary nor will temperatures be taken. However we will ask everyone to keep their masks while inside the church. The Session continues to base our response to the pandemic by following the NJ Cali scores and CDC guidelines. Hopefully during the month of June we will see "green" which is the lowest level of impact. When this occurs, the Session will revise our strategies again. Let's all hope that soon, and very soon, the only restrictions for worship and programs will be setting an alarm or finding a good parking spot!



- With more congregants choosing to attend Sunday Worship services in person and evolving CDC and State of NJ COVID-19 pandemic guidelines and mandates, Rev. Garry suggested a task force be formed to review First Presbyterian Church of Metuchen's pandemic policies and practices going forward. Session concurred and will look to the recommendations of the task force in June.
- Session listened to Youth Commission's presentation of COVID-19 pandemic safety protocols to be in place for both the Young Adult and Youth mission trips to Roanoke, Va. Session acknowledged the commission for thoroughly addressing all reasonable safety precautions relating to the pandemic for everyone attending the mission trips.
- Session moved to accept changes to FPC-M's Sanctuary Church policy as recommended by the Immigration Task Force and presented by Rev. Karmann and Elder Linda Boughton.

That You May Live by Heidi Hyland Mann

During the pandemic, I've worshiped online with several congregations. The web address for one ends ".net/live." As I navigate to this site, I tend to read the adjective form "live," as in "livestream." One Sunday, however, the verb form, as in "Worship and live," popped into my mind. I had almost slept in and skipped that morning's service. But as I worshiped with others, albeit remotely, my spirit indeed felt increasingly alive. That whole day I felt I was living more fully because I'd been inspired by God's Word in sermon and song and shared in praising God with others.

Worship reminds us there is something — Someone — greater than ourselves. Worship opens us to new ways of living.

Moses, after he had passed along God's gift of the Ten Commandments, including the rule to keep the Sabbath day holy through rest and worship, told the people:

"Walk in obedience to all that the Lord your God has commanded you, so that you may live"

-Deuteronomy 5:33, NIV

We too worship God regularly — so that we may more fully live.

Article taken from Newsletternewsletter June 2021 edition.

LIMITED SPACE AVAILABLE BOOK NOW!

FIRST PRESBYTERIAN CHURCH OF METUCHEN
2021 VACATION BIBLE SCHOOL

REGISTER NOW! *
 *Open until June 21

Imagine with God!

Build with God!

Work with God!

Grow with God!

WORKSHOP OF WONDERS
 Imagine & Build with God

EXPLORE AND EXPERIENCE HOW THE ORDINARY BECOMES EXTRAORDINARY WITH GOD!

JUNE 28 TO JULY 1, 2021
MON. – THURS. 9–11:45 A.M.

OPEN TO CHILDREN ENTERING K TO 6TH GRADE

VBS 2021 is planning to be in person, masked, distanced and using COVID-19 safety guidelines at that time.

COST: \$25 PER CHILD*

FPC Members: \$25 per child, Maximum \$50 per family

Non Members: \$25 per child

Download a Registration form from fpcweb.org/forms or pick up a copy from the Church office (in the Social Center).

For more information contact: Nancy Leardi nleardi@fpcweb.org OR (732) 491-2264
 First Presbyterian Church of Metuchen: 270 Woodbridge Avenue, Metuchen, NJ 08840

Sign up now! There is a cap of 15 children per class, K to 6th graders. Covid safety guidelines will be implemented with masks required inside and outside. Drop off and pick up will be outside the building and no parents will be entering the sanctuary. Windows and doors will be open for ventilation.

Many volunteers are needed! Sign up to help 1 or all 4 days. We hope you will consider taking a role and help grow the faith of our little ones. Please contact Nancy Leardi for any concerns or questions.

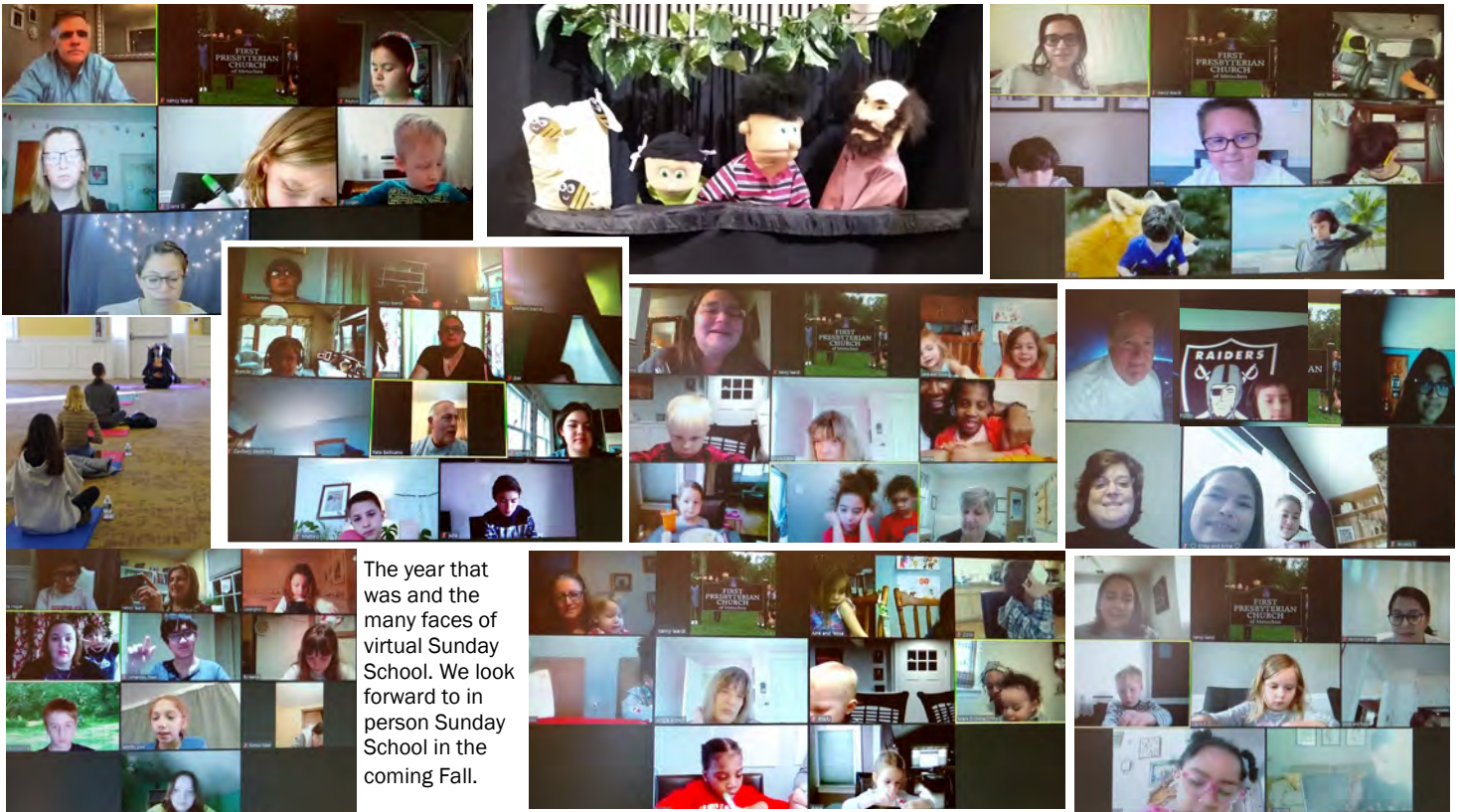


We are God's children, fearfully and wonderfully made. (Psalm 139:14)

THANK YOU FROM THE CHRISTIAN EDUCATION OFFICE

We all can agree that this was a challenging year for gathering and growing together in our faith. Many of our leaders stepped up and continued working on creative ways of engaging the children. Our Sunday school teachers learned how to create interactive Bible story lessons with captivating crafts. Other youth leaders gathered outside while bundled up in all kinds of weather.

Thank you to all our leaders for making this year safe and for finding ways to teach our children. God bless you all.



The year that was and the many faces of virtual Sunday School. We look forward to in person Sunday School in the coming Fall.



We are thrilled to have in person Summer Sunday School for children in Preschool through 4th grade. Save these dates:
June 13th / July 11th / August 8th
9:30 am in room 109

On June 13th at 9:30am, we will take our kids for a tour of the Community Garden with Jen Messina. We will be reading the story of the Parable of the Sower and planting beans! We ask that you place a reservation so we have a head count of our Sunday School kids. Reservations are required.
Please contact Mrs. Leardi: nleardi@fpcweb.org



This June Nursery care resumes. Childcare for infants to 2 year olds will be offered by our loving and experienced high school youth volunteers. Questions? Contact Nancy Leardi by email: nleardi@fpcweb.org

Questions? Contact our Christian Education Director, Nancy Leardi: (732) 491-2264 or nleardi@fpcweb.org



Youth Group for this unique year of programming is nearly complete. We just have one more End of the Year Blowout and Senior Night on June 9th. Although there were so many challenges we had to navigate this year, I am grateful we were able to continue this program throughout the year. Our Youth and Youth Leaders are truly resilient. From outside activities under the tent-only to extreme social distancing inside the Social Center, we experienced it all. And now as the vaccine is readily available and restrictions are being lifted, it feels like our marathon is nearly complete and normalcy will be here this Fall. A beautiful moment indeed.

UPCOMING YOUTH MISSION FUNDRAISERS

- A Father’s Day Car Wash on Saturday, June 19th.
 - Krispy Kreme orders run through June 15th and pick-up of donuts will take place during the Car Wash on Saturday, June 19th.
- Order forms are available at the church office. Support our Habitat mission trip and place your Donut orders while there’s time!



YOUTH MISSION TRIP

Given Covid precautions and alterations, everyone is expected to attend one of the Youth Mission trip meetings for this year’s trip. Mark your calendars to attend either Sunday, June 13th at 11am in Social Center Dining Room or Wednesday, June 16th at 7:30pm in Social Center Dining Room. Habitat packets are due back by June 20th. The Youth Mission trip will be July 25th-31st this year. We are collecting these items for our 2021 Youth Mission. Please bring these items to the Church Social Center or contact Rev. Karmann at jkarmann@fpcweb.org for further information.

- | | |
|---|---|
| Peanut butter | Paper towels |
| Jelly | Napkins |
| Nutella | Snack-sized bags of chips, pretzels, Cheetos, Fritos, etc. |
| Fluff(ernutter) | Snack-sized cookies (Oreos, Chips Ahoy) |
| Ketchup | Iced tea mix |
| Mustard (yellow, brown) | Lemonade mix |
| Mayo | Watermelons |
| BBQ sauce | Brown paper lunch bags |
| Penne pasta | Plastic lunch bags |
| Pasta sauce (Alfredo, meat, marinara) | |
| Cereal | *Please purchase plastic containers rather than glass, if available. Also, check expiration dates if donating prior to July. |
| Salsa | |
| Salad dressing (French, ranch, Italian) | |

Questions on the Youth Program, please contact Rev. Justin Karmann by email: jkarmann@fpcweb.org or call: (732) 491-2260



Music Ministry

As we have just observed Memorial Day and we look forward to July 4, I am sharing the words to a fairly new hymn. It is a patriotic hymn that could be sung in any country of our world. **This is My Song** was a poem written by Lloyd Stone (1912–1993) and whose words were set to the Finlandia hymn melody composed by Jean Sibelius in 1934.

*This is my song, O God of all the nations, a song of peace for lands afar and mine.
This is my home, the country where my heart is; here are my hopes, my dreams, my holy shrine;
But other hearts in other lands are beating with hopes and dreams as true and high as mine.*

*My country's skies are bluer than the ocean, and sunlight beams on cloverleaf and pine.
But other lands have sunlight too, and clover, and skies are everywhere as blue as mine.
So hear my song, O God of all the nations, a song of peace for their land and for mine.*

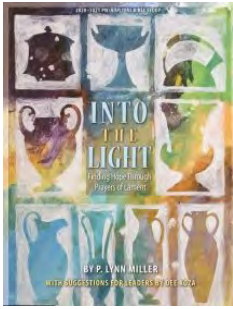
*This is my prayer, O Lord of all earth's kingdoms: thy kingdom come; on earth thy will be done.
Let Christ be lifted up till all shall serve him, and hearts united learn to live as one.
So hear my prayer, O God of all the nations: myself I give thee; let thy will be done.*

On Thursday, May 6, a few choir members gathered under the tent for some fellowship and singing. It had been months and months since we sang together, and it was wonderful! We are hoping that we will be able to gather to sing indoors sometime in the fall. We look forward to congregational singing coming back to our worship services!



Questions about the Music Ministry? Please contact Brenda Day: brendaday@fpcweb.org or (732) 491-2266

ADULT ENRICHMENT PROGRAM



INTO THE LIGHT

Finding Hope Through
Prayers of Lament

Lesson Nine: June 7
6:00-7:00 pm
By Zoom

God has promised that one day there will be no more crying, no more death, no more lament. The focus scriptures for this last lesson are from Isaiah 25:6-10 and Revelation 21:1-8. Deb Teall will be leading. A link to the lesson may be found through the church website— <https://fpcweb.org/dev/get-involved/presbyterian-women/> Click on the link for Horizon Bible Study Lesson. *This study is for everyone!*

Join our Zoom Meeting Hosted by Deb Teall and PW:
<https://us02web.zoom.us/j/86590898594?pwd=VFdOMjk4U2laOEhjcXJvZWsySUxTQT09>

Call, text or email Deb for a Study Guide: (908) 917-3990 or debteall@optonline.net OR jump on the Zoom even without a Study Guide!



THE RISE OF THE GOTHIC CATHEDRALS

JUNE 23rd at 7:00 pm

In-Person in the Dining Room and
Virtually by Zoom

We will continue with our Gothic Cathedral study. Please join in person in the Dining Room or via zoom. See the link below.

This month we will be discussing the cathedral as place of healing and pilgrimage. To prepare for this, please consider paying a visit to the Metropolitan Museum at the Cloisters. The museum is open from 10 am-4:30 pm Thursday – Monday. There is a beautiful park surrounding this incredible medieval experience just an hour away.

I will be going to the Cloisters on June 20th for Father's Day. If you would like to join me you are most welcome.

Below is the Zoom link:

<https://us02web.zoom.us/j/2757857260>
Meeting ID: 275 785 7260

Patterns and Themes: An Exercise On Our Life Experiences With Rev. Fred Garry and Laura Draper Begins June 13th After worship in the Chapel

Beginning in June, Laura Draper and I will lead folks in a small group exercise. The exercise requires some preparation, but the gathering is only for a few hours.

The Parts of Our Lives Worksheet is now available on our website. This is a fabulous exercise to remember the path our life has taken to this point. Consider doing the exercise and also consider taking part in a small group discussion where five-to-six members will describe what they found. The discussion lasts a few hours, but it will be a gift you keep for long time.

If you would like to join in, please contact Nancy Leardi at nleardi@fpcweb.org. We will send you the materials and then find a time for you to enjoy a small group. Again, the preparation and the exercise is brief, but the value lasts a long, long time.

Please contact Nancy Leardi at nleardi@fpcweb.org for the available times.

Good news from the
PRESBYTERIAN WOMEN !!

RUMMAGE
SALE

SPECIAL OUTDOOR EDITION

June 5th Saturday ONLY | 9 am – 3 pm

DROP OFF: JUNE 1st, Tuesday – JUNE 3rd, Thursday

Rain Date: June 12th

Start cleaning out your closets! PW is bringing back their much sought rummage sale with a Special Outdoor Edition Rummage Sale.

PW is looking for donations of adult and kids apparel, shoes, accessories (belts, bags, scarves, ties, hats, etc.), bed/ bath/ kitchen linens/curtains, toys/ puzzles/games, frames/ baskets, household items/ electronics/ rain-proof outdoor items.

Meantime, please hold off the following for the Fall Rummage Sale: furniture, bulky items, stuffed animals, books/magazines, records/ tapes. Donated items are subject to PW

acceptance. Also, please limit donations to one car trunk load per family as there will be limited space.

Covid safety protocols will be strictly observed, with masks and social distance. Indoor facility and bathrooms are not available.



And make a difference!

PW organizes, and the volunteers make the rummage sale happen. The success of the rummage sale depends on those who help sort, price, sell and cleanup after the event. Please consider giving your time for another successful event so PW can continue their support of all the programs that benefit from the proceeds of the rummage sale. Here are ways you can volunteer:

June 1-3 /Tues.—Thurs., 1-6 pm: Receive and sort donations

June 4 / Fri. 9 am– 4 pm: Sort and price donations. We are not receiving any more drop offs.

June 5 / Saturday

- 8 am Set up
- 9 am—3 pm Help at check out / cashier
- 3-4 pm Breakdown and clean up

We need many hands for this to be a success. If you cannot do a day, please consider a smaller shift, a couple of hours each day will also go a long way. Thank you!!

Please email Cindy O'Neill mimabook@aol.com if you have any questions.



We received this offering on Palm Sunday. Thank you to all members and PW who generously gave \$3,164.

For more than 70 years, One Great Hour of Sharing has provided us a way to share God's love with our neighbors in need. In fact, OGH is the single, largest way Presbyterians come together every year to work toward a better world.

The three programs supported by One Great Hour of Sharing - Presbyterian Disaster Assistance, the Presbyterian Hunger Program, and Self-Development of People - all work in different ways to serve individuals and communities in need. From initial disaster response to ongoing community development, their work fits together to provide people with safety, sustenance, and hope.



YOUR HELP IS NEEDED

Every Sunday our Church provides a live stream of our 9:30 am service which allows so many to join us when they can't actually be "in church."

But...for us to continue our Live Streaming, **we need more volunteers to operate our equipment on Sunday mornings.**

NO computer skills are necessary – operating the equipment couldn't be easier!! We'll train you, Nate is there to assist on Sunday if you need help, and, ***it's just one Sunday a month!***

Would you please consider joining the Live Stream Team so that we can continue to provide this important ministry?

Please contact:

Gail Stein

Jane Meyer

gailstein4@gmail.com or

jagmeyer@gmail.com



REFLECTIONS ON JUNETEENTH

By Virginia Shaw

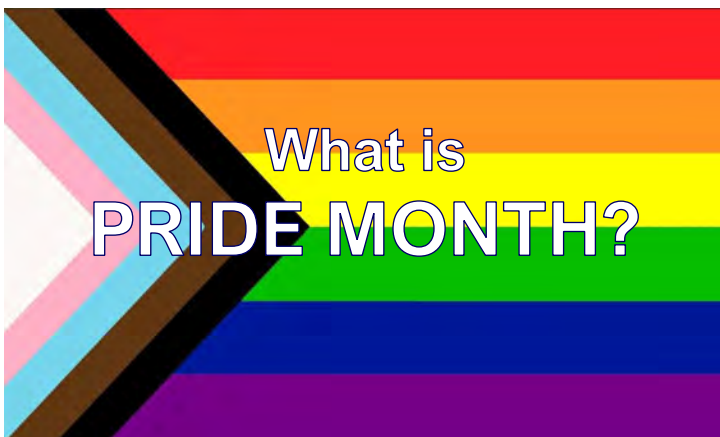
As a black woman that is a 100 percent descendant of North Carolina slaves, it may be surprising to know that I never heard the phrase Juneteenth until a few years ago.

What I was taught in school was that the Civil War began in 1861 and ended in 1865 and that the Emancipation Proclamation was issued by President Abraham Lincoln on January 1st, 1863. The proclamation declared that all enslaved persons had been declared free.

Looking back, I never actually thought about the process itself and the fact that “Freedom” takes time especially when there was resistance to the loss of “possessions”

Juneteenth is a popular name for the date of June 19th, 1865, the date that Federal troops arrived in Galveston, Texas to read the proclamation which declared the last enslaved persons in the country free.

Juneteenth is celebrated by many African Americans and is also known as Emancipation Day, Freedom Day, Jubilee Day and Liberation Day. Efforts continue to have this important day in history recognized as a National Holiday.



LGBTQIA+ (Lesbian, Gay, Bisexual, Transgender, Queer, Intersex, and Asexual) Pride Month is celebrated in the United States in June to commemorate the Stonewall Riots that took place at the end of June 1969.

Many pride events take place during this month to recognize the impact numerous LGBTQIA+ members have had on history worldwide. There are also memorials held for members of the community who have been lost due to hate crimes or HIV/AIDS.

If you’re looking for a source for more information check the Human Rights Campaign and the Library of Congress.

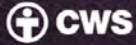
As we learn more about God’s will and purposes for our lives, we understand what it means to be fully human in an imperfect world. We reaffirm our church as a refuge to all who seek fellowship. Jesus commanded us to love our neighbors as we love ourselves! We honor those in our church community who have felt the pain of prejudice and bigotry. This is an opportunity during June to deepen and broaden our understanding of Christ's love.

Thanks to Abby Kozo and Jennifer Edge for this article.

MOTHER. [muhth-er] | verb
to treat someone with kindness and affection and try
to protect that person from danger and difficulty.



CWS BLANKETS. FOR MOMS WORLDWIDE.



*"They are also filled with abundant joy,
which has overflowed in rich generosity."*
2 Corinthians 8:2

Blanket Sunday May 9, 2021
Donations Received: \$1,650

DONOR	IN HONOR	IN MEMORY
Linda Amato	Janis Grundmann Norma Ferber Dawn Bryant	Eleanor Krebs Regina Arleth Magdalena Grundmann Elvira Alex Florence Krebs Beth Sullivan Ruth Grundmann Irma Kerrison Carolyn Krebs Amato Women Alma Krebs Gail Schurr Ruth Williams
Sally Ayotte	Beverly Cummings Lisa Kincaid Dona Benham Adrienne Langford Nancy Leardi Linda Lee Mundy Glory Thomas Jan Margolis Dawn Ayotte Ashwini Vaidya	
Joyce & Bill Bashew		Vern Mozgai Mary Bashew
Mark & Ann Behrens	Leann Behrens Parker	Our Moms - Ruth & Fritz
Amy & Pete Bellisano	Linda Kubiak Carol Carr	Angelina Bellisano Ruth Hume Joan Senese
Dee Bonner		Emily D. Cannon Catherine Cuningham Eleanor Macklin Jane Moynihan
Carol Carr	Linda Kubiak Kathy Arn Amy Bellisano Mary Kay Dangremond Dee Bonner Lois Crespy June Young	
Cook Family	Brenda Day Susan Marquard Amy Bellisano Margaret Davis Margo Gunsser	
Wally & Samantha Cook	Maggy Cook	
Charlie, Jonathan, Elisa, Sean & Cadence	Brenda Day	
Brenda, Charlie and Jonathan Day Elisa, Sean and Cadence Owens	Rocio Day Maggy Cook	Dorothea Arnold

DONOR	IN HONOR		IN MEMORY	
Brenda, Charlie & Jonathan Day	Elisa Owens			
Ruth Endicott			M. Frances McNeil Elizabeth P. Jones	
Bob & Linda Hale			Our mothers, Millie & Ruth Our sisters, Carol & Susan	
Grace Hammesfahr			Margaretta McKnight Grace McKnight Lillian Hammesfahr Lillian Alexander Madeline McKnight Spargo	
Ingrid Hammond	Jessica Hammond	Cameron Hammond	Marianne Hedwig Kerekes	
Sue Harmon & George LaTorre	Dorothy Canary Diane Harmon Debbie Kotula Eileen Harmon Donna Harmon	Karen Harmon Michele Byrne Leah French Dee Leitner	Phyllis Harmon Connie LaTorre Our Grandmothers Joan Senese	
Marie Hoffsommer	Peggy Byers Kathy Girouard Michele Graves Heidi Hoffsommer Barbara Hoffsommer Barbara Mark Carolyn Neupauer	Charlotte Neupauer Fran Neupauer Lisa Neupauer Mary Neupauer Dawn Robinson Sue West	Evelyn Girouard Sara Hoffsommer Susan Neupauer	
Linda, Carol, Kathy and Amy	Jennifer Mayo Beth LoPiccolo		Ruth Hume Gertrude Hume	Mary Kramer
Carol & Jake Issler	June Issler Janet Issler	Kelli Issler Maritza Santiago	Rosa Hernandez	
Amy Jeney	Molly White Mary Heim	Laura Hale	Kathy Kunkler Josephine Starzick	
Bill & Amy Jeney			Maureen O'Brien Marianne England	Eileen Duffy Barbara Lee Runyon
Bill, Eric, Brian & Sarah Jeney	Amy Jeney			
Eric, Brian & Sarah Jeney	Mary Ellen Seres			
Bill, Amy, Eric, Brian & Sarah Jeney	Marnie Jeney	Jean Pasquale	Virginia Nesterwitz	Katherine Clarke
June Keehler			Ruth Bowers Gladys Erbe	Helen Keehler
Emily Kertscher			Emily Weber	
Jeff, Nancy, Jack and Jenna Kipnis	Jean Blomn Barbara Kipnis Judi Rhinesmith	Jessica Blomn Leslie Kropinak Patricia Rhinesmith	Almeada Vermeulen	

DONOR	IN HONOR		IN MEMORY	
Wendy Kukowski	Sylvia Zanoni Carla Zanoni Clare Posnack	Cathy Auriemma Christina Torres Clara Torres	Anna Kukowski Grasso Maddalena Silverstein	
Vicky & Gil Lacson	Paula Gaven Pat Naparsteck	Noemi Lacson	Pacita V. Lacson Lydia Sugue	
Lindsey Leardi	Julie Walton Shaver			
Melissa Leardi	Sally Ayotte			
Mike, Nancy, Lindsey & Melissa Leardi	Geri Leardi			
Nancy Leardi	Eileen Finn Francesca Bush Mary Beckhusen Lisa Qualben	Glory Thomas Jennifer Thompson Kat Davis		
Bill & Susan Marquard	Judy Kennedy Kate Caito Suzi Wilsoncroft Mindy Teague Marybeth Marquard	Mickey Coles Tara Marquard Debbie Weingarten Colleen Weingarten Brittany DiMeglio		
Bill & Susan Marquard	Caitlyn Zahn Franny Romero Pat DeFeo	Brenda Day Maggy Cook Amy Bellisano		
Merry Matlock	Rebecca Britton Beverly Cummings		Muriel Johnson Muriel Vandenberg	Lenoir Stewart
Ed & Jane Meyer			Mary Meyer	Evelyn Glanzer
Doris Moskal	June Young Linda Burr Christine Young	Dorothy Austin Staff	Dora Moskal Antoinette Ziegler Margaret Scott	BarbaraLee Runyon Muriel Johnson
Linda Lee & Jonathan Mundy			Barbaralee Runyon Dorothy Mundy	Irma Kerrison
Rob Orr	Kathy Kovach		Theresa Kovach	
Gary Ostermueller	Cathy Ostermueller			
Cathy & Gary Ostermueller	Gerrie Bishop		Jean Ostermueller	
Andrene, Mike, Victoria and Maya Pennix	Neva Stoddart			
Victoria & Maya Pennix	Andrene Sinclair-Pennix Maisie Hayden Sheila Ramsay	Dorothy Pennix Andrea Patton		
Presbyterian Women	Mothers Worldwide			
Matt & Brenda Redshaw	Donna Wilkins	Joanne Redshaw		

DONOR	IN HONOR		IN MEMORY	
Nancy Regan	Karen Coleman Kristine Sprauer Melinda Wilson Lorraine Gallipoli Patty Mergel Sue Wise	Debbie Geller Barbara Mortensen Ginny Triolo Carol Regan Pam Regan	Dorothy Woods	
Tracy Regan	Nancy Regan Michele Masucci Ruzena Goldenberg Arlene Munoz Monica Liriano Carol Regan Elaine Hochberg	Jessica Ripley-Morgan Julia Levant Priscilla Kelley Karen Haglof Ginny Triolo Nancy Leardi Leslie Gittess	Dorothy Woods Ruth Hancock Sherry Lawrence	
Karen Rubarski			Fern Crowhurst Julia Rubarski	Jeri Herold
Andrene Sinclair-Pennix	Shiela Ramsay	Maisie Hayden		
Joan R. Subits	Sally Rees Dolores LeVan Sally Calantoni	Mary Liz Sweeney Robin Schmalzried	Elizabeth Rees Mildred Kavlik	Betty Cintura Lorelei Bujdoso
Deb Teall			Janet S. Harris	
Thompson Family	Carol Turkett Nancy Woolver	Melissa Salek	Patricia Thompson Scarlett Woolver	Elaine Luther
Christine Young	June Young Doris Moskal	Linda Burr		
June, Jerry, Richard & Christine	Doris Moskal		Dora Moskal	Sara Ailene Young
June & Jerry Young	Christine Young	Pauline Kohl Young		
June Young	Linda Burr Terri Bogan	Susan Moskal Cara Scacco	Antoinette Ziegler Dottie Ann Ziegler	
Joan Yuskevich	Carey Katoke			

Thank you for your dedication to providing Blankets for Church World Service. Each year, our congregation helps to provide CWS Blankets to people throughout the world and to families in emergency shelters across the country. The blankets help them stay warm in their time of need. You have shared God’s grace with people and have made a difference in their lives.

Since 2002, we have raised over \$40,000 for Blanket Sundays. These donations to CWS are a tangible reminder that they are not alone. Children - and their parents - can rest a bit more warmly because of your love.

For your wonderful support of Blanket Sundays and on behalf of all the families you have helped, but may never meet—**THANK YOU!**





Community Nursery School offers classes for Young Learners (2.5 years old), Pre-K3s, Pre-K4s and a half day wrap program (K-Wrap) for kindergarten students attending a half day kindergarten program. K-Wrap will be offered in both the morning and afternoons. CNS offers a walking school bus to/from Moss School.



Visit our website www.communityns.org or call 732-491-2240 for additional information or to schedule a visit. FPC church members receive a 5% discount on tuition.



**Are you graduating from High School, College or Grad School?
THIS IS FOR YOU !**

Hats off to our Class of 2021!

We are recognizing all our graduates in our SonDay Paper and July Parish News. Please email to us the following information so they can be included in our list of graduates:

- Name of Graduate
- School
- Plans for further education
- Degree graduate obtained

Email the above to Merry Matlock: mmatlock@fpcweb.org

**Deadline for submission of the above information is
Monday, June 14.**



“Because he works from home. That’s why we never see God in person.”

Cartoon taken from Newsletternewsletter.com

First Presbyterian Church of Metuchen

CHURCH CLERGY AND STAFF

CLERGY

- Rev. Dr. Fred Garry**732-491-2330
Senior Pastor/Head of Staff fgarry@fpcweb.org
- Rev. Justin Karmann**732-491-2260
Associate Pastor jkarmann@fpcweb.org
- Rev. Robert A. Beringer, Pastor Emeritus**

CHRISTIAN EDUCATION

- Nancy Leardi**732-491-2264
Director Christian Ed. nleardi@fpcweb.org
- Kat Davis** kdavis@fpcweb.org
Christian Education Production Leader

MUSIC MINISTRY

- Brenda Day**732-491-2266
Minister of Music brendaday@fpcweb.org
- Elaine Hansen** ehansen@fpcweb.org
Assistant Bell Director and Accompanist

SUPPORT STAFF

- Sue Harmon**732-491-2302
Director of Operations/Treasurer sharmon@fpcweb.org
- Jonathan Hollenbeck**732-491-2270
Facilities Manager jhollenbeck@fpcweb.org
- Bob O'Connell** 732-491-2270
Facilities Assistant boconnell@fpcweb.org
- Vicky Lacson** 732-491-2303
Office Assistant vlacson@fpcweb.org
- Nick Spadavecchia** 732-491-2305
Communications Consultant
..... nspadavecchia@fpcweb.org
- Nate Brown** 732-347-9951
Technician and Sound Design Consultant
..... nbrown@fpcweb.org
- Merry Matlock** 732-491-2301
Administrative Asst. mmatlock@fpcweb.org
- Sarah Teti**732-491-2325
Food Pantry Coordinator foodpantry@fpcweb.org

COMMUNITY NURSERY SCHOOL

- Fran Brennan.** 732-491-2242
Director/Treasurer fbrennan@fpcweb.org
- Colleen Smith** 732-491-2242
Head Teacher csmith@fpcweb.org

FRIENDLY REMINDERS FROM THE CHURCH OFFICE

Thank you everyone for your continued support during this time.

GOD'S WORK, OUR HANDS
YOUR GIFT, YOUR CHOICE

DIRECT Cash or check donation into the plate are always welcome!

ONLINE Please click here to donate now:
<https://tinyurl.com/y8ffksu4>

TEXT TO DONATE Make a donation via Text message! Simply text to: **732-479-8245** an amount (no dollar sign needed) to this number and follow the prompts to complete your donation!

GIVE+ APP Search "Give Plus Church" in your phone App Store, download the app and find Church name by zip code 08840.

Thank you for your generous support!



**From Memorial Day, May 31 till
Labor Day, September 7**

SUMMER OFFICE HOURS

**MONDAY - THURSDAY
8:00 AM to 4:30 PM**

**FRIDAY
8:00 AM to NOON**

**INDONESIAN FELLOWSHIP
PULPIT SUPPLY FOR MAY**

June 13	Rev. Jelty Ochotan Parengkuan
June 20	Rev. Ferdinanda Pattipeilohy
June 27	Rev. Henderika J Wattimena

All Indonesian Worship Services will continue to be streamed live through Facebook. In-person worship service in Indonesian language is back and will be at Noon in the Sanctuary of FPC. All covid protocols such as mask wearing, social distance and contact tracing will continue to be observed. If you have questions you may contact Norma Tambingon or Sandra Laluw.

JUNE 2021 PARISH NEWS

FIRST PRESBYTERIAN CHURCH OF METUCHEN
270 Woodbridge Avenue, Metuchen, NJ 08840

NONPROFIT ORGANIZATION
US POSTAGE PAID
NEW BRUNSWICK, NJ
PERMIT 746

Address Service Requested

TO:



The information contained herein is for Church use only. Individuals using this information must receive permission of the Session of the First Presbyterian Church of Metuchen, NJ.

Stay up to date with just one click!

We are now using Mail Chimp to bring to you the latest church happenings. Sign up to make sure we have your correct email address.

Visit the church website, send an email to fpc@fpcweb.org or use your cell phone to go directly to the link using this QR code.

We promise not to spam you!



First Presbyterian Church of Metuchen is a congregation of the Presbyterian Church (USA).

Parish News Submission

To submit an article for the Parish News, email vlacson@fpcweb.org or see us at the church office. Deadline for submission is the 15th of the month.

Church Office

270 Woodbridge Avenue, Metuchen, NJ 08840
Hours: Monday – Thursday 8:00 am to 4:30pm
Friday 8:00 am to Noon
Telephone: (732) 491-2300 Email: fpc@fpcweb.org

Sunday Worship Service: 9:30 am
Online Sunday Morning Worship : 9:30 am
Livestreamed on FPC Metuchen Facebook