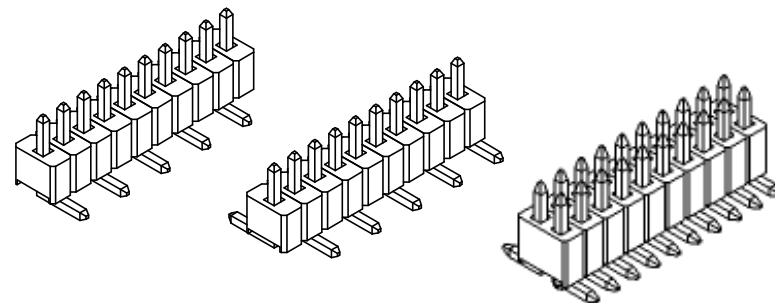
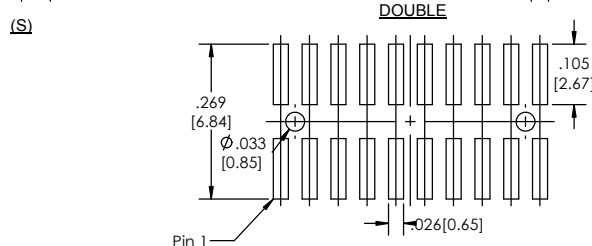
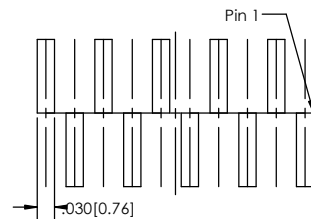
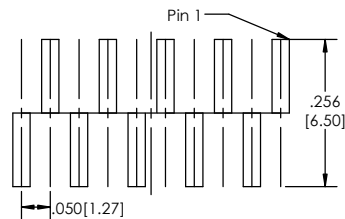


Recommended P.C. Board Layout

SCALE 6:1

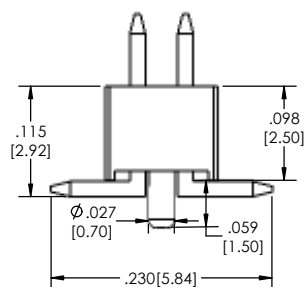
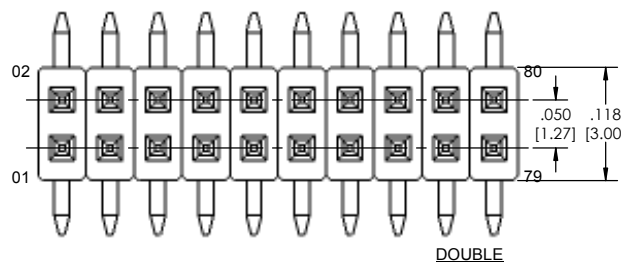
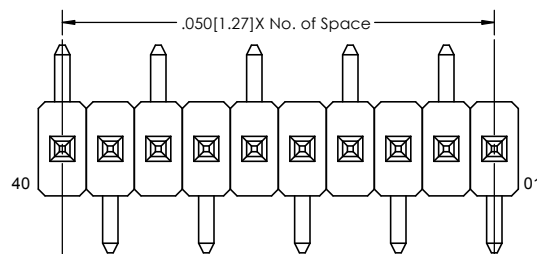
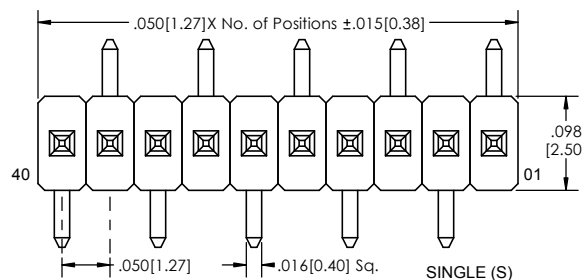
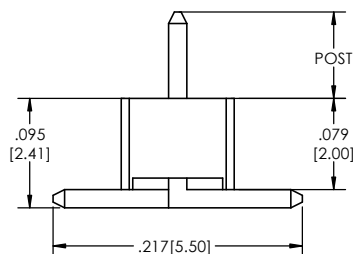
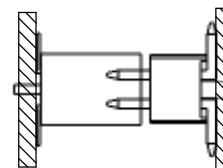


TTSHSM-5 XX - X - XX - XX - V - XXX - X - XX - X - XX - LF
(A) (B) (C) (D) (E) (F) (G) (H) (I) (J) (K)

- A. Pins Per Row
 - 1 through 40
- B. Row Specification
 - S= Single Row
 - D= Double Row
- C. Pin Options
 - See Pin Option box below
- D. Plating Options
 - See Plating Options below
- E. Vertical
- F. Polarized Position
 - Leave blank if not required
 - e.g. .200[5.08] =200
- G. Footprint Orientation
 - S= Pin 1 right
 - M= Pin 1 left
- H. Packing Information
 - TR= Tape and Reel
 - TB= Tube
- I. Pad
 - P= Plastic
 - O= No Pad
 - If left blank, packaging at MLE's discretion
 - Pad may be metal, mylar, or plastic
- J. Alignment Pin Option
 - AP= With
 - Leave blank if not needed
- K. Lead Free

Mates with:
LSSH
SMSS
SSHS.

APPLICATION



Specifications:
Current Rating: 1.0 Ampere
Insulation Resistance: 1000M Ohms Min.
Dielectric Withstanding: 300V AC
Contact Resistance: 20M Ohms Max.
Operation Temperature: -40°C to +105°C
Max. Process Temperature
Peak: 260°C up to 10 secs.
Process: 230°C up to 60 secs.
Wave: 260°C up to 6 secs.
Reflow: 260°C up to 10 sec.
Manual Solder: 350°C up to 5 secs.

Materials:
Contact Material: Phosphor Bronze
Insulator Material: Nylon 6T
Plating: Au or Sn over 50µ" [1.27] Ni

Tails may be clipped to achieve specific dimensions.
Products cut to specific sizes are uncancellable/ nonreturnable.
Parts are subject to change without notice.



PROPRIETARY AND CONFIDENTIAL
THE INFORMATION CONTAINED IN THIS DRAWING IS THE SOLE PROPERTY OF Major League Electronics. ANY REPRODUCTION IN PART OR AS A WHOLE WITHOUT THE WRITTEN PERMISSION OF Major League Electronics IS PROHIBITED.

UNLESS OTHERWISE SPECIFIED:		NAME		DATE
DRAWN		EOW		02/24/14
CHECKED		GWE		02/24/14
ENG APPR.				
MFG APPR.				
INTERPRET GEOMETRIC TOLERANCING PER:		ADDRESS:		2533 Centennial Blvd. Jeffersonville, IN 47130 Phone: 812-670-4174 Fax: 812-670-4175 E-Mail: mle@mllectronics.com
MATERIAL		FINISH		
NEXT ASSY		USED ON		
APPLICATION		DO NOT SCALE DRAWING		
DIMENSIONS ARE IN INCHES		TOLERANCES:		ONE DECIMALS ±.100 TWO DECIMAL ±.010 THREE DECIMAL ±.005 FOUR DECIMAL ±.002
TITLE: TTSHSM-5-V SERIES		SIZE		DWG. NO. C
SCALE 12:1		REV		A
SHEET 1 OF 1				

