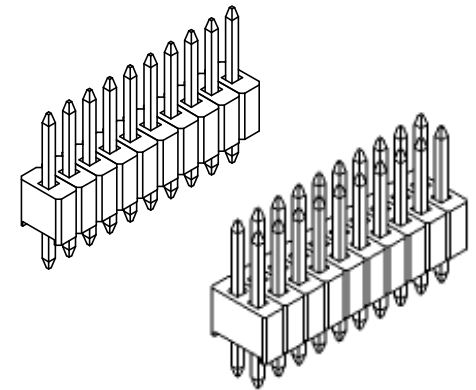
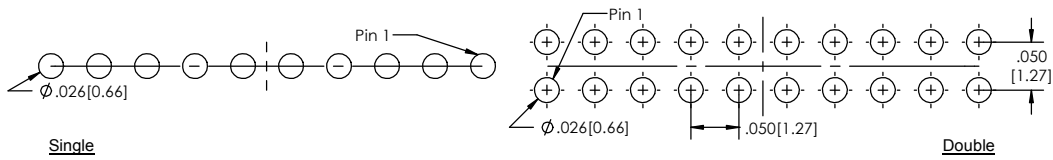


Recommended P.C. Board Layout

SCALE 10:1

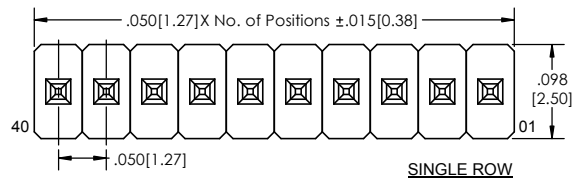
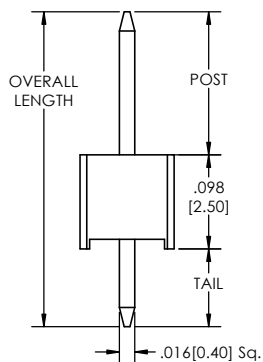
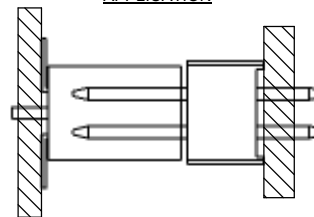


TTSHC-5 **XX** - **X** - **XXX** - **XX** - **XXX** - **XX** - **XXX** - **X** - **LF**
(A) (B) (C) (D) (E) (F) (G) (H) (I)

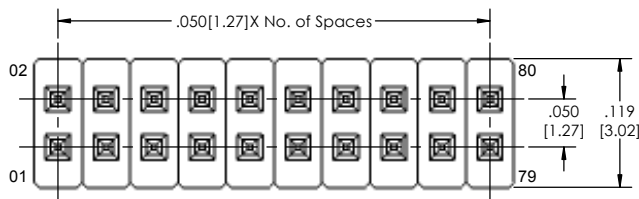
- A. Pins Per Row - 1 through 33
- B. Row Specification - S= Single Row - D= Double Row
- C. Desired Tail Length - If left blank - Length(L) - Post(P) - .100[2.54] = Tail(T)
- D. Pin Options - See Pin Option box below
- E. Desired Post Height - Please specify - e.g. .200[5.08] =200
- F. Plating Options - See Plating Options below
- G. Polarized Position - Leave blank if not required - e.g. .200[5.08] =200
- H. Every Other Pin filled - Leave blank if not needed - E= With
- I. Lead Free

Mates with:
 L SHSS
 SMSS
 SSHS

APPLICATION



SINGLE ROW



DOUBLE ROW

Plating options	
G	10µ Gold on Contact Area/ Flash on Tail
T	Matte Tin all Over
GT	10µ Gold on Contact Area/ Matte Tin on Tail
H	30µ Gold on Contact Area/ Matte Tin on Tail
F	Gold Flash over Entire Pin
FT	Gold Flash on Contact Area/ Matte Tin on Tail

Pin Options		
Overall Length	Max. Post Height	
.328[8.32mm]	.149[3.78mm]	06
.430[10.92mm]	.251[6.37mm]	08
.480[12.19mm]	.301[7.65mm]	10
.530[13.46mm]	.351[8.92mm]	12
.580[14.73mm]	.401[10.18mm]	14
.630[16.00mm]	.451[11.45mm]	16
.680[17.27mm]	.501[12.72mm]	18
.730[18.54mm]	.551[13.99mm]	20
.780[19.81mm]	.601[15.26mm]	22
.830[21.08mm]	.651[16.53mm]	24

Specifications:
 Current Rating: 1.0 Ampere
 Insulation Resistance: 1000M Ohms Min.
 Dielectric Withstanding: 300V AC
 Contact Resistance: 20M Ohms Max.
 Operation Temperature: -40°C to +105°C
 Max. Process Temperature
 Peak: 260°C up to 10 secs.
 Process: 230°C up to 60 secs.
 Wave: 260°C up to 6 secs.
 Manual Solder: 350°C up to 5 secs.

Materials:
 Contact Material: Copper Alloy
 Insulator Material: Nylon 6T
 Plating: Au or Sn over 50µ" (1.27) Ni
 Tails may be clipped to achieve specific dimensions.

Products cut to specific sizes are uncancelable/ nonreturnable.
 Parts are subject to change without notice.



PROPRIETARY AND CONFIDENTIAL
 THE INFORMATION CONTAINED IN THIS DRAWING IS THE SOLE PROPERTY OF Major League Electronics. ANY REPRODUCTION IN PART OR AS A WHOLE WITHOUT THE WRITTEN PERMISSION OF Major League Electronics IS PROHIBITED.

UNLESS OTHERWISE SPECIFIED:		NAME DATE			TITLE: TTSHC-5 SERIES SIZE DWG. NO. C REV B SCALE 10:1 SHEET 1 OF 1
DIMENSIONS ARE IN INCHES		DRAWN EOW 02/24/14			
TOLERANCES: ONE DECIMALS ±.100 TWO DECIMALS ±.100 THREE DECIMALS ±.005 FOUR DECIMALS ±.002		CHECKED GWE 02/24/14			
NEXT ASSY USED ON APPLICATION		ENG APPR.			
INTERPRET GEOMETRIC TOLERANCING PER:		ADDRESS:		2533 Centennial Blvd. Jeffersonville, IN 47130 Phone: 812-670-4174 Fax: 812-670-4175 E-Mail: mle@mlelectronics.com	
MATERIAL:		FINISH:		DO NOT SCALE DRAWING	