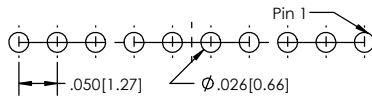
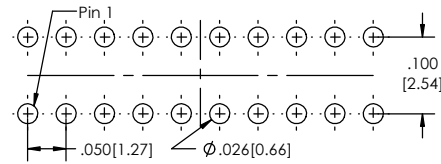


**Recommended P.C. Board Layout**  
SCALE 8:1

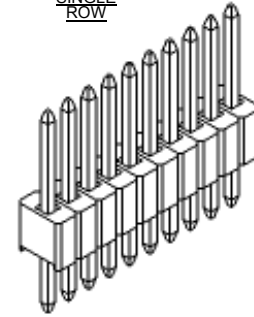


**SINGLE ROW**

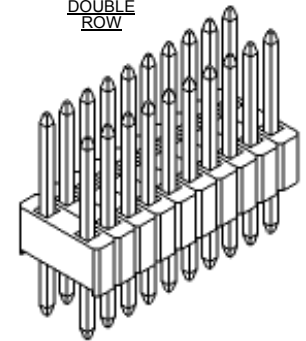


**DOUBLE ROW**

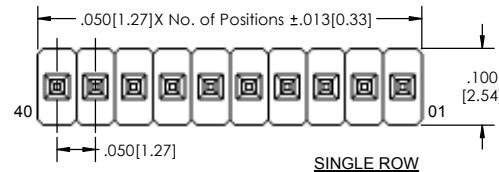
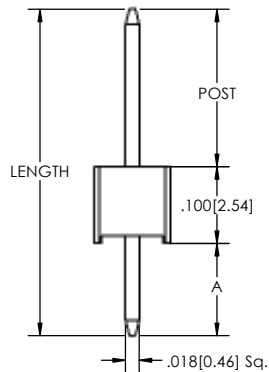
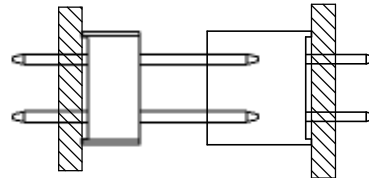
**SINGLE ROW**



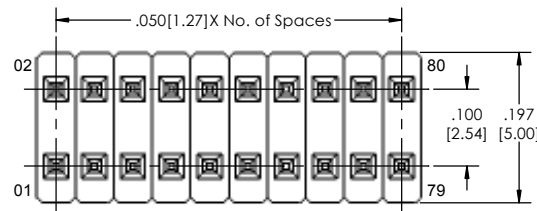
**DOUBLE ROW**



**APPLICATION**



**SINGLE ROW**



**DOUBLE ROW**

TSHS-6 **XX** - **X** - **XX** - **A** - **XX** - **XXX** - **LF**  
(A) (B) (C) (D) (E) (F) (G)

- A. Pins Per Row  
- 1 through 40
- B. Row Specification  
- S= Single Row  
- D= Double Row
- C. Pin Options  
- See Pin Options below
- D. A= Tail Length
- E. Plating Options  
- See Plating Options below
- F. Polarized Position  
- Leave blank if not needed  
- If required, specify empty pin position  
- e.g. 012 for Pin 12
- G. Lead Free

Mates with:  
LSSHS  
SMSS  
SSHS

Plating options	
G	-10µ Gold on Contact Area/ Flash on Tail
T	-Matte Tin all Over
GT	-10µ Gold on Contact Area/ Matte Tin on Tail
H	-30µ Gold on Contact Area/ Matte Tin on Tail
F	-Gold Flash over Entire Pin
FT	-Gold Flash on Contact Area/ Matte Tin on Tail

Pin Options		
Length	Post with .120 Tail	
.320 [8.13mm]	.100 [2.54mm]	04
.330 [8.38mm]	.110 [2.79mm]	05
.410 [10.41mm]	.190 [4.83mm]	08
.425 [10.80mm]	.205 [5.13mm]	11
.450 [11.43mm]	.230 [5.84mm]	14
.505 [12.83mm]	.285 [7.24mm]	16
.555 [14.10mm]	.335 [8.51mm]	20
.610 [15.49mm]	.390 [9.91mm]	22
.625 [15.88mm]	.405 [10.29mm]	24
.650 [16.51mm]	.430 [10.92mm]	26
.705 [17.91mm]	.485 [12.32mm]	28
.755 [19.18mm]	.535 [13.59mm]	30
.825 [20.96mm]	.605 [15.37mm]	32
1.050 [26.67mm]	.830 [21.08mm]	40

Specifications:  
Current Rating: 1.0 Ampere  
Insulation Resistance: 1000M Ohms Min.  
Dielectric Withstanding: 300V AC  
Contact Resistance: 20M Ohms Max.  
Operation Temperature: -40°C to +105°C  
Max. Process Temperature  
Peak: 260°C up to 10 secs.  
Process: 230°C up to 60 secs.  
Wave: 260°C up to 6 secs.  
Manual Solder: 350°C up to 5 secs.

Materials:  
Contact Material: Phosphor Bronze  
Insulator Material: Nylon 6T  
Plating: Au or Sn over 50µ" (1.27) Ni

Tails may be clipped to achieve specific dimensions.  
Products cut to specific sizes are uncancellable/ nonreturnable.  
Parts are subject to change without notice.



**PROPRIETARY AND CONFIDENTIAL**  
THE INFORMATION CONTAINED IN THIS DRAWING IS THE SOLE PROPERTY OF Major League Electronics. ANY REPRODUCTION IN PART OR AS A WHOLE WITHOUT THE WRITTEN PERMISSION OF Major League Electronics IS PROHIBITED.

UNLESS OTHERWISE SPECIFIED:		NAME		DATE
DIMENSIONS ARE IN INCHES		DRAWN	EOW	02/15/16
TOLERANCES:		CHECKED	GWE	02/15/16
ONE DECIMALS ±.100		ENG APPR.		
TWO DECIMAL ±.010		MFG APPR.		
THREE DECIMAL ±.005		ADDRESS:		
FOUR DECIMAL ±.002		2533 Centennial Blvd. Jeffersonville, IN 47130 Phone: 812-670-4174 Fax: 812-670-4175 E-Mail: mle@mllelectronics.com		
NEXT ASSY	USED ON	TITLE: TSHS-6 SERIES		
APPLICATION		SCALE 8:1		
DO NOT SCALE DRAWING		SHEET 1 OF 1		



SIZE DWG. NO. **C** REV **B**