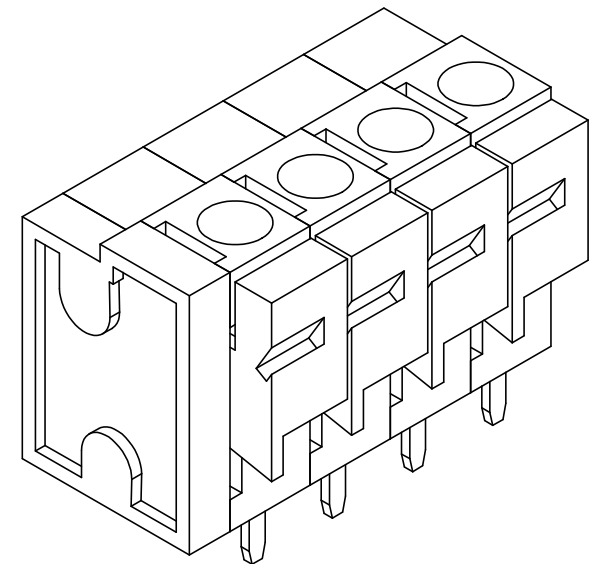
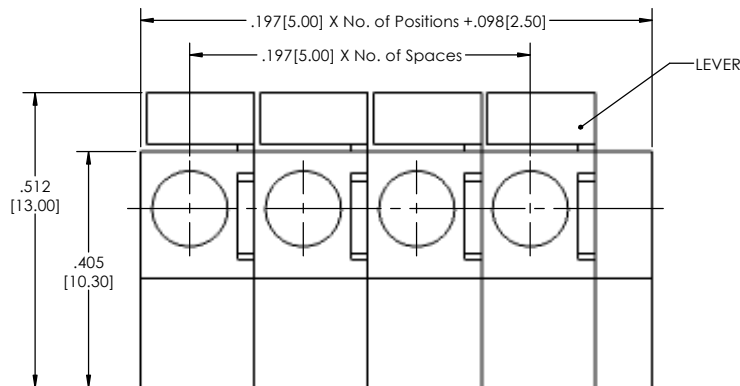
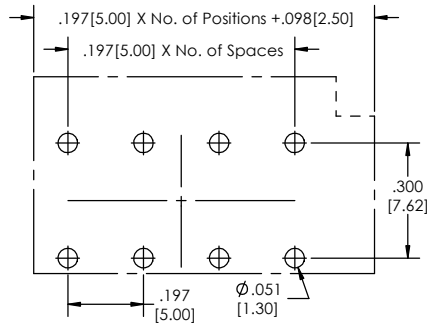


Recommended P.C. Board Layout
SCALE 4:1

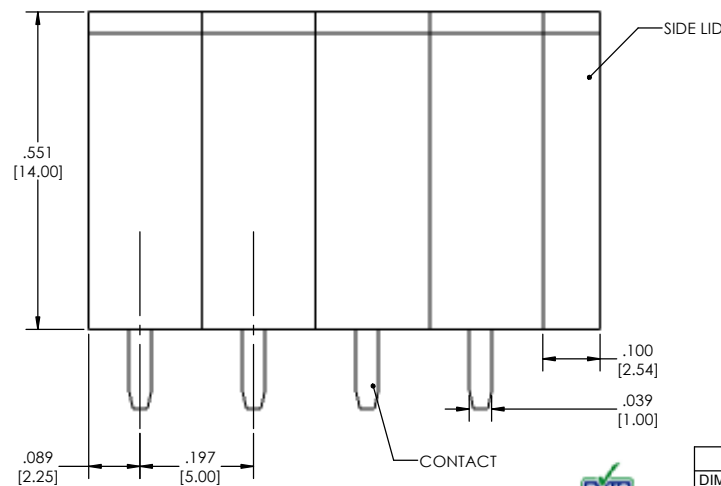
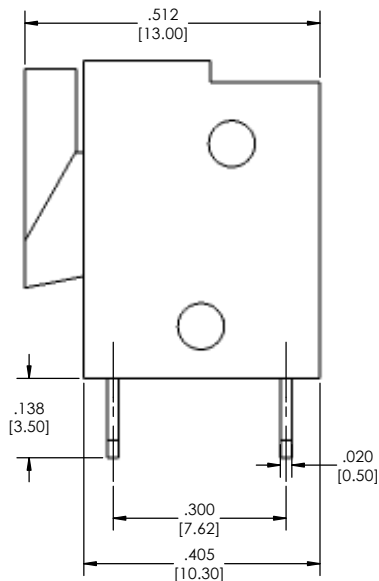


TBS - 01 - **197** - **XX** - **XX** - **LF**
(A) (B) (C) (D)

- A. Pitch
- 197= .197(5.00) cl
- B. No. of Positions
- 02-12
- C. Color
- GR= Green (Standard)
- BK= Black
- BL= Blue
- WH= White
- GY= Grey
- OR= Orange
- YW= Yellow
- RD= Red
- BR= Brown
- D. Lead Free
- Specifications:
Current Rating: 10 Ampere
Voltage Rating: AC 300V
Wire Range: 14-22 AWG
Insulation Resistance: DC 500V 1000M ohms
Dielectric Withstanding Voltage: AC 2500V/1 minute
Operation Temperature: -33°C to +105°C
Strip Length: .354-.394 (9-10mm)

- Materials:
1. Body: PA66 (Nylon), UL94 V-0
 2. Lever: PA66 (Nylon), UL94V-0
 3. Side Lid: PA66 (Nylon), UL94V-0
 4. Terminal: Brass, Tin Plated
 5. Contact: SUS301 Stainless Steel

Tails may be clipped to achieve specific dimensions.
Products cut to specific sizes are uncancellable/ nonreturnable.
Parts are subject to change without notice.



PROPRIETARY AND CONFIDENTIAL
THE INFORMATION CONTAINED IN THIS
DRAWING IS THE SOLE PROPERTY OF
Major League Electronics. ANY
REPRODUCTION IN PART OR AS A WHOLE
WITHOUT THE WRITTEN PERMISSION OF
Major League Electronics IS
PROHIBITED.

UNLESS OTHERWISE SPECIFIED:		NAME		DATE
DRAWN		EOW		04/16/14
CHECKED		GWE		04/16/14
ENG APPR.				
MFG APPR.				
INTERPRET GEOMETRIC TOLERANCING PER:		ADDRESS:		
MATERIAL		2533 Centennial Blvd.		
NEXT ASSY		Jeffersonville, IN 47130		
USED ON		Phone: 812-670-4174		
APPLICATION		Fax: 812-670-4175		
DO NOT SCALE DRAWING		E-Mail: mle@mllelectronics.com		
FINISH		TITLE: TBS-01-197 Series		
		SIZE DWG. NO.		REV
		C		A
		SCALE 6:1		SHEET 1 OF 1

